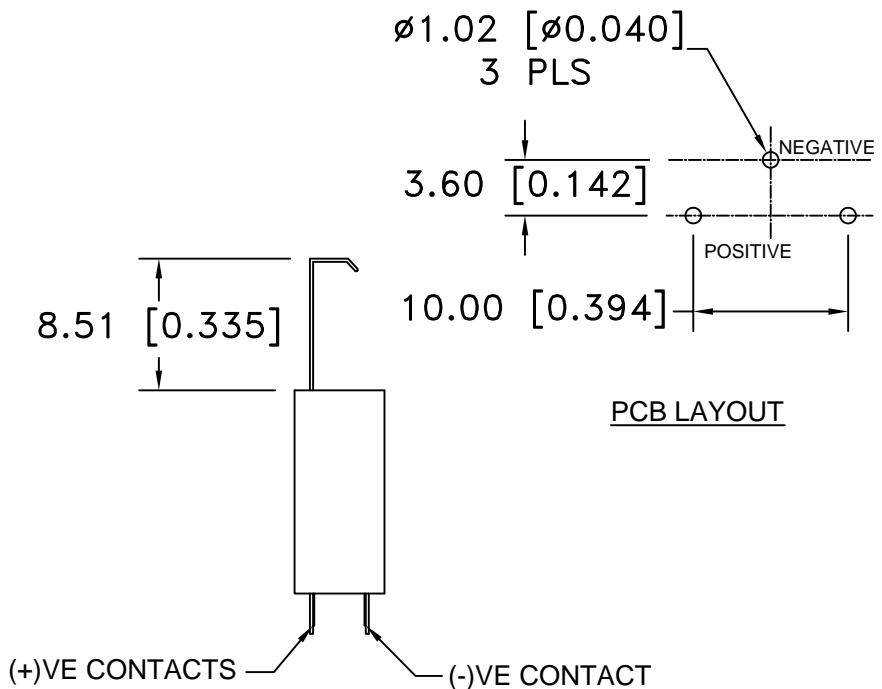
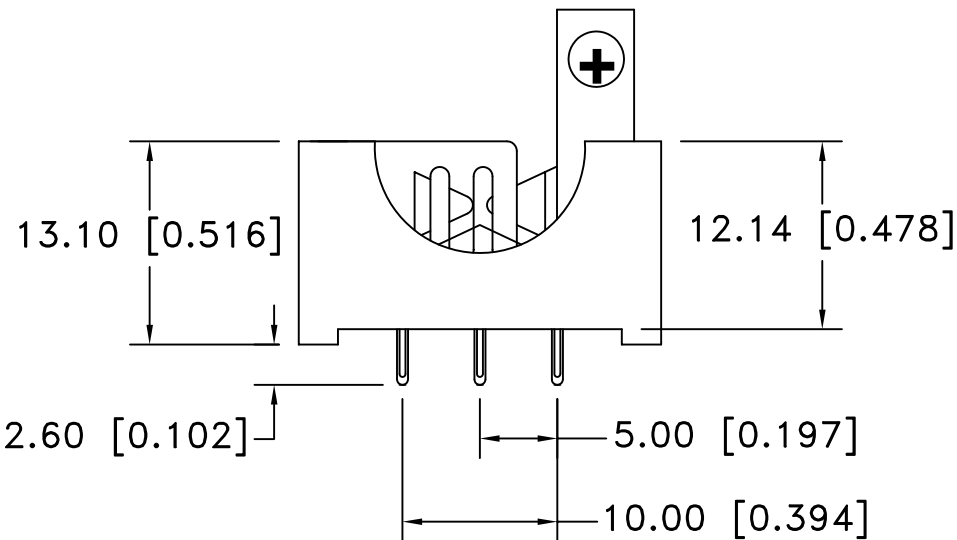
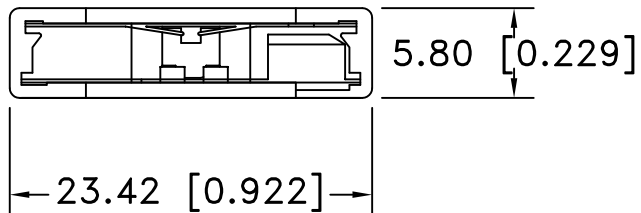



Date	SYM	REVISION RECORD	AUTH	DR.	CK.
11/06/04	A	ADDED PCB LAYOUT DIM. 2.60 WAS 3.52	T.B.	B.S.	
10/01/05	B	"Ω" SIGN WAS "?"	T.B.	B.S.	
10/22/05	C	ADDED "ROHS COMPLIANT"	T.B.	B.S.	
9/04/08	D	COLOR WAS BLUE	T.B.	B.S.	



NOTES:

MATERIAL: GLASS FILLED NYLON 66, UL94V-0  
 COLOR BLACK  
 CONTACTS: PHOSPHOR BRONZE, C5191, PLATED TIN  
 (80u" ~ 200u") OVER ALL, **MUST BE LEAD FREE**  
 ELECTRICAL :  
 VOLTAGE: 250V AC  
 CONTACT RESISTANCE: 30mΩ MAX  
 INSULATION RESISTANCE: 1000mΩ AT DC 500V  
 DIELECTRIC STRENGTH: AC 1000V PER MINUTE  
 OPERATION TEMPERATURE: -55°C TO +85°C

Tolerance (Except as noted)	 <b>Memory Protection Devices, Inc</b> 200 Broad Hollow Road, Farmingdale, New York 11735		
decimal ±.5 (.020)	Scale	Drawn By B.S.	
Fractional ± .8 (.030)	Title	Approved By T.B.	
Angular ± 3°	Date	Drawing Number	
	9/04/08	BK-5058	