

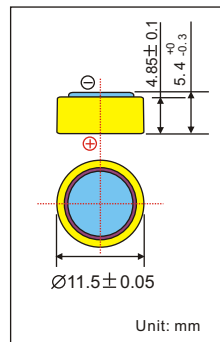
LR44 Alkaline Dry Battery

Brief Datasheet

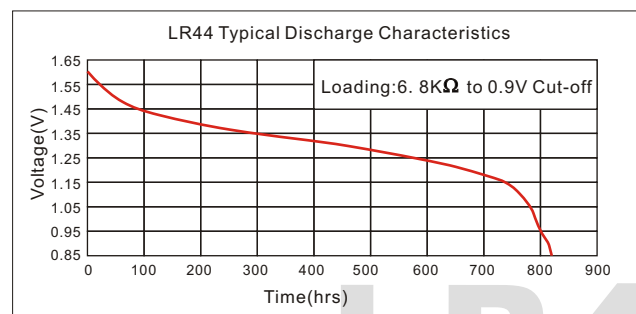
1 BASIC SPECIFICATION

| | | |
|---|-----------------|------------------|
| Nominal capacity (under 6.8k Ω load to 0.9V end-point voltage ,at +23 $^{\circ}$ C) | | 155mAh |
| Nominal voltage | | 1.5V |
| Open-Circuit Voltage | Initial | 1.530V or higher |
| | After 12 months | 1.500V or higher |
| Closed-Circuit Voltage | Initial | 1.520V or higher |
| | After 12 months | 1.490V or higher |
| Service Life (6.8k Ω Continuous Discharge) | Initial | 820hrs or longer |
| | After 12 Months | 750hrs or longer |
| Weight | | 1.95g |

2 DIMENSION



3 ELECTRICAL CHARACTERISTICS



Note: Any representations in this brochure concerning performance, are for informational purposes only and are not construed as warranties either expressed or implied, of future performance.