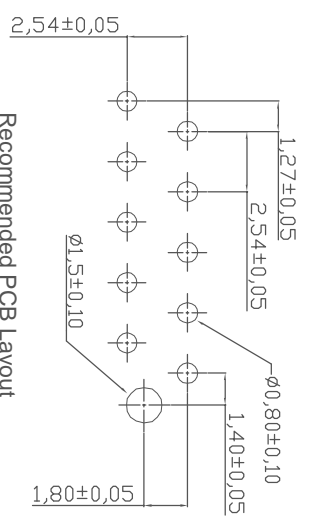
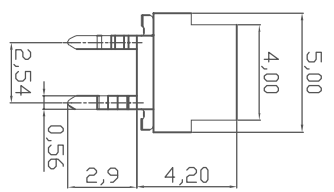
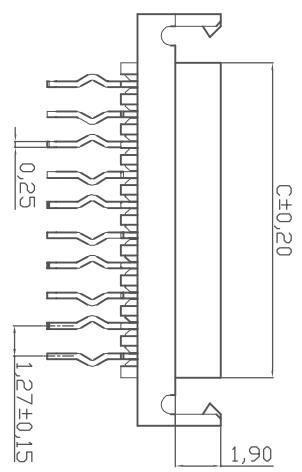
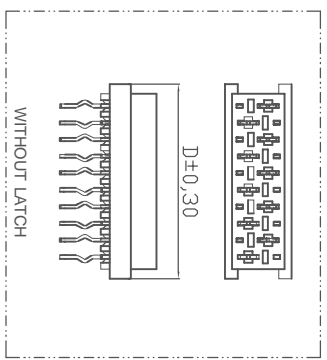
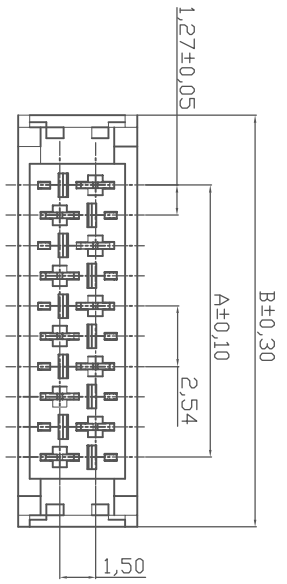


1	2	3	4	5	6	7
---	---	---	---	---	---	---



Recommended PCB Layout

A = 1.27x No. of Spaces
 B = A + 5.87
 C = A + 1.80
 D = A + 3.27
 * Available in 4~26 circuits

No. of Contacts: A-32-xxV-13xx
 04 to 26
 Packing: latch option: 0= without latch
 0= Tube Packing
 R= Paper Reel Packing
 L= with latch

- NOTES:**
1. Insulation : Glass Filled Polyester UL 94V-0
Color Red
 2. Contact : Phosphor Bronze
 3. Plating : Matte Tin plated over Nickel
 4. Contacts type : Straight Type

RoHS compliant

Scale	1:1
TOLERANCE	
X	±0.30
.XX	±0.20
.XXX	±0.10
DIM	TOL
X.°	±1°
Angle	TOL

①	Id.	
②	Paper Reel Packing added	
③	Drawn	05.08.2009
	Modification	
	Date	25.09.2009
	Name	Dean

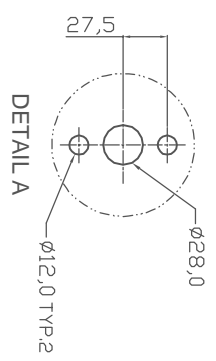
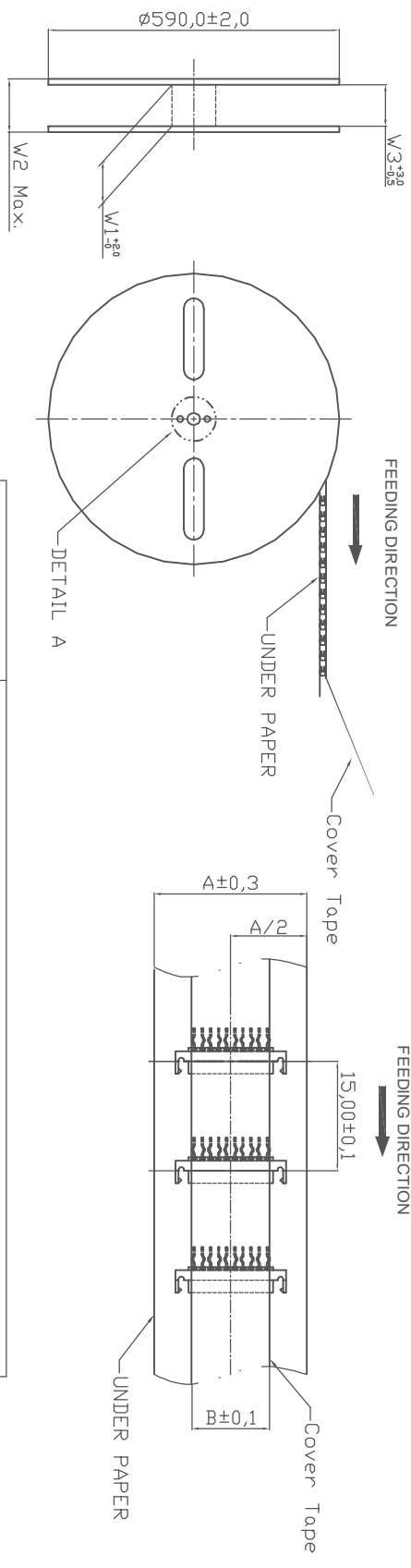
Drawn	Date	05.08.2009	Name	Dean
Approved	Date	25.09.2009	Name	Hellwig

Customer-No.	
ASSMANN WSW-No.	A-32-xxV-13xx
Drawing-No.	ASS 3632 CO
Replace	rev02
SHEET	1/2



1	2	3	4	5	6	7
---	---	---	---	---	---	---

1 2 3 4 5 6 7



Contacts	Dimension		
	A	B	W3
4	11.0	6.0	13.0
6	17.0	6.0	18.0
8	17.0	6.0	18.0
10	21.0	6.0	22.0
12	21.0	6.0	22.0
14	24.0	6.0	25.0
16	29.0	6.0	30.0
18	29.0	6.0	30.0
20	32.0	6.0	33.0
22	36.0	6.0	37.0
24	36.0	6.0	37.0
26	39.0	6.0	40.0

Quantity: 2500 PCS/Reel/Caton

A							A
B							B
C							C
D							D
E							E
F							F
G							G
H							H

RoHS compliant

Scale	Free					Customer-No.	
TOLERANCE							
X	±X						
.XX	±X						
.XXX	±X						
DIM	TOL						
X.°	±1°						
Angle	TOL						
		①	Drawn	05.08.2009	Dean		
		②	Paper Reel Packing added	25.09.2009	Dean		
			Modification				



ASSMANN WSW-No.	A-32-xxV-13XX
Drawing-No.	ASS 3632 CO
Replace	rev02
SHEET	2/2

1 2 3 4 5 6 7