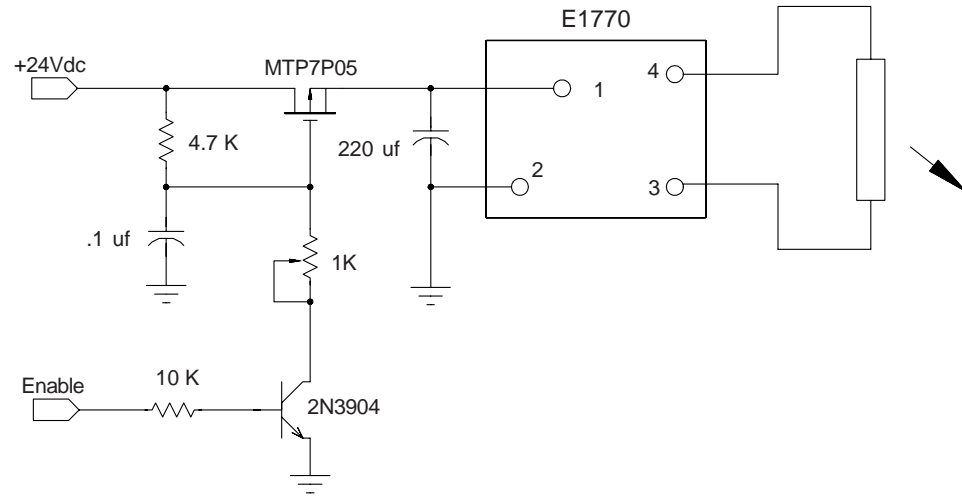
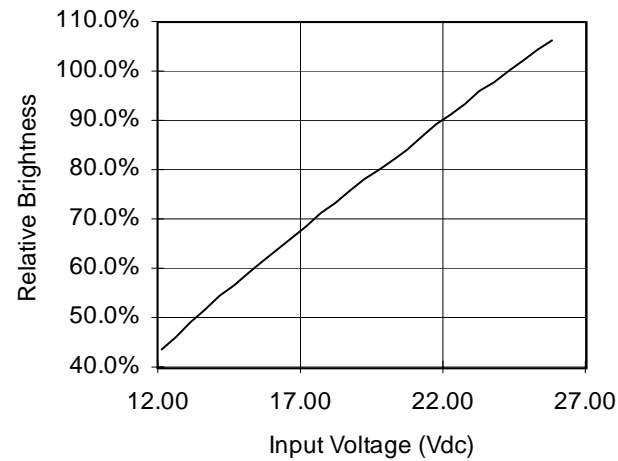


E1770

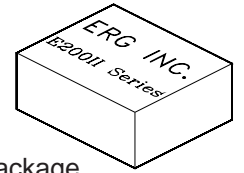


Relative Brightness vs. Input Voltage



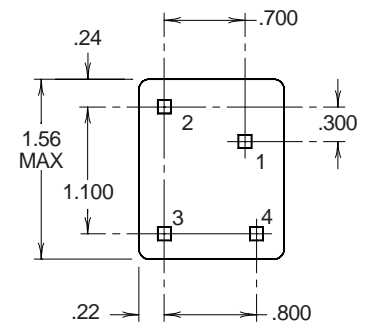
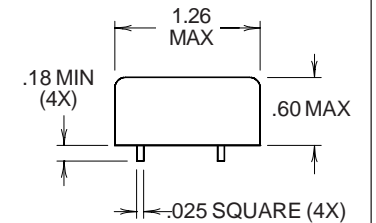
E1770

Single Tube DC to AC Inverter



E200 Package

Package Configuration



1. Vin(+)
2. Vin(-)
3. Vout(AC)
4. Vout(AC)

Specifications and Applications Information

5/12/06

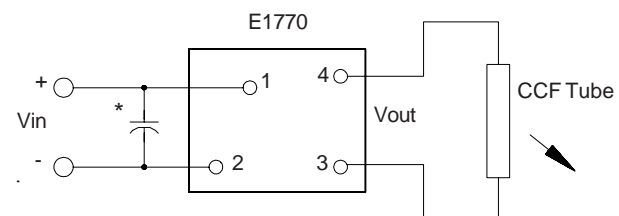
Preliminary

The E1770 (E200II Series) dc to ac inverter is specifically designed to power the Hitachi LMG6912 LCD display to a moderate brightness level from a +24 volt dc source.

The E1770's small size, encapsulated package and low input power requirements (typically 1.8 watts) makes it the ideal power source for battery applications where small size, high efficiency and reliability are critical.

This standard inverter is designed to satisfy the most common cold-cathode lighting requirements for the LMG6912 display. Custom units, providing different inputs, outputs or package refinements are available.

Connection Diagram



* Input bypass capacitor may be required (10uf - 100uf)

Absolute Maximum Ratings

Rating	Symbol	Value	Units
Input Voltage Range	Vin	-0.3 to +28	Vdc
Operating Temperature	To	0 to +70	°C
Storage Temperature	Tstg	-40 to +85	°C

Recommended Operating Conditions

Rating	Symbol	Value	Units
Input Voltage	Vin	+6 to 26.4	Vdc

Electrical Characteristics

Unless otherwise noted Vin = 24.00 Volts dc and Ta = 25°C

Characteristic	Symbol	Min	Typ	Max	Units
Input Current	Iin	-	0.075	0.085	Adc
Operating Frequency	Fo	23	28	33	KHz
Minimum Output Voltage	Vout (min)	1070	-	-	Vrms
Efficiency	η	-	81	-	%
Output Current	Iout	-	5.8	-	marms
Output Voltage (When Powering a Hitachi LMG6912 display)	Vout	-	250	-	Vrms

After tube has been allowed to warm-up for 5 minutes

Specifications subject to change without notice

Typical Performance Curves

