

1-phase filters FN 2450

Safe and Ergonomic EMC/EMI Filter with very Low Leakage Current

SCHAFFNER
energy efficiency and reliability



- Light weight plastic enclosure design
- Very low filter leakage current
- Hinged safety covers
- Embedded filter terminals
- Different performance levels
- Environmental friendly design without potting compound
- Optional medical versions (B type) according IEC/EN 60601-1

Approvals

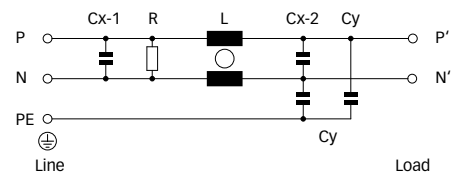


Technical specifications

Maximum continuous operating voltage:	250VAC, 50/60Hz
Operating frequency:	dc to 400Hz
Rated currents:	6 to 20A @ 55°C
High potential test voltage:	P/N → PE 2500VAC for 60 sec* P → N 1100VDC for 2 sec
Temperature range (operation and storage):	-25°C to +100°C (25/100/21)
Flammability corresponding to:	UL 94V-0 (safety covers UL 94V-1)
Design corresponding to:	UL 1283, CSA 22.2 No. 8 1986, IEC/EN 60939, EN 60601-1
MTBF @ 40°C/230V (Mil-HB-217F):	>180,000 hours

* Type testing only

Typical electrical schematic



Features and benefits

- A plastic housing and a metal ground plate are cleverly combined to get the lowest possible product weight without compromising EMC behavior.
- The embedded terminals from Schaffner guarantee user-friendly handling and reliable, long-lasting electrical connection.
- Captive hinged protective covers contribute to overall safety by offering protection against unintended contact with live conductors. They are included in the standard scope of delivery without any extra cost.
- Optional medical versions (B type) comply with the requirements of IEC/EN 60601-1 for creepage and clearance, leakage current and high potential testing.
- Very low leakage current values make the filters suitable for grids with very tough requirements or sensitive GFCIs, and for applications which set value on safety and reliability.
- FN 2450 feature an ecologically conscious construction without the use of potting compound or banned substances (RoHS). Used raw materials can be easily separated at the end of the product life time for proper and environmentally safe disposal.

Typical applications

- Electrical and electronic equipment
- Test and measurement devices
- Medical devices
- Industrial automation
- Small machines
- Office automation equipment

Filter selection table

Filter*	Rated current @ 55°C (40°C)	Leakage current** @ 230VAC/50Hz	Inductance L	Capacitance		Resistance R	Input/Output connections	Weight
	[A]			[mA]	Cx [μF]			
FN 2450G-6-61	6 (6.8)	0.73	10.5	0.47	4.7	1	-61	210
FN 2450G-10-61	10 (11.4)	0.73	4.9	0.47	4.7	1	-61	210
FN 2450G-16-61	16 (18.2)	0.73	1.84	0.47	4.7	1	-61	210
FN 2450G-20-61	20 (22.8)	0.73	0.94	0.47	4.7	1	-61	210
FN 2450F-6-61	6 (6.8)	0.52	10.5	0.47	3.3	1	-61	210
FN 2450F-10-61	10 (11.4)	0.52	4.9	0.47	3.3	1	-61	210
FN 2450F-16-61	16 (18.2)	0.52	1.84	0.47	3.3	1	-61	210
FN 2450F-20-61	20 (22.8)	0.52	0.94	0.47	3.3	1	-61	210
FN 2450B-6-61	6 (6.8)	0.002	10.5	0.47		1	-61	210
FN 2450B-10-61	10 (11.4)	0.002	4.9	0.47		1	-61	210
FN 2450B-16-61	16 (18.2)	0.002	1.84	0.47		1	-61	210
FN 2450B-20-61	20 (22.8)	0.002	0.94	0.47		1	-61	210

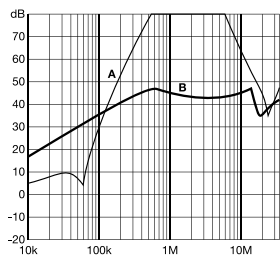
* The letter following FN 2450_ represents the value of the Y-capacitor and is directly related to the performance and leakage current of the filter. Other Y-capacitor values are available upon request.

** Maximum leakage current under normal operating conditions. Note: if the neutral line is interrupted, worst case leakage could reach twice this level.

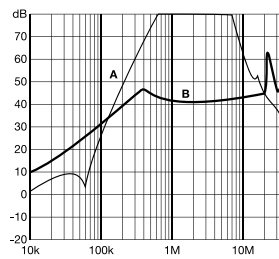
Typical filter attenuation (FN 2450F)

Per CISPR 17; A = 50Ω/50Ω sym; B = 50Ω/50Ω asym

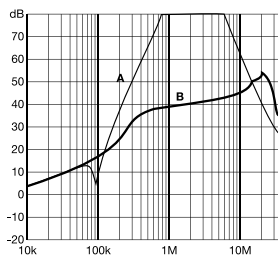
6A types



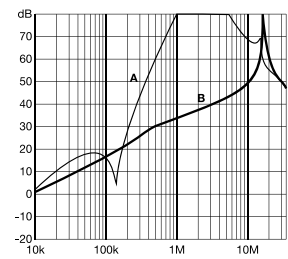
10A types



16A types



20A types



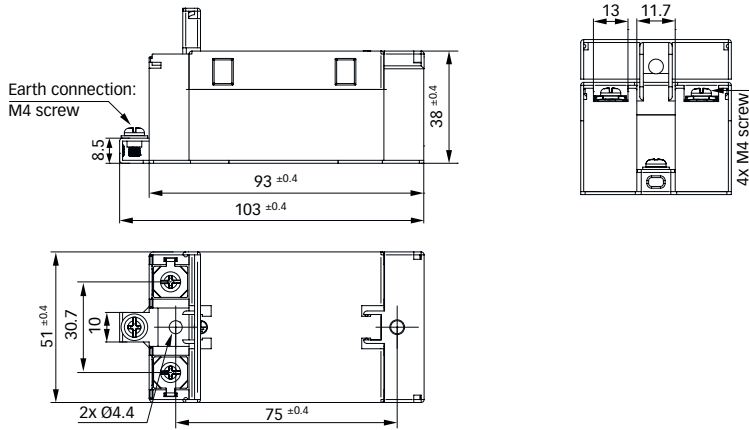
Installation



FN 2450 are delivered with closed plastic covers and fastened terminals. To install the filter please proceed as follows:

- Mount the filter on a metal surface with two appropriate bolts.
- First connect the green/yellow wire to the earth stud of the filter.
- Gently lift the two hinged plastic covers.
- Untighten the terminals with an appropriately sized screw driver.
- Connect phase and neutral wires with cable lugs by pushing down and tightening the bolts.
- Please note the torque recommendation on the next page.
- Push the safety covers back into their locked position to finish the filter installation.

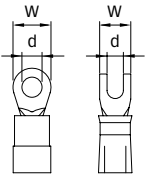
Mechanical data



Filter input/output connector cross sections

	-61 (6A)	-61 (10A)	-61 (16A)	-61 (20A)
Flex wire	1.3 - 2.5mm ²	1.3 - 2.5mm ²	4 - 6mm ²	4 - 6mm ²
AWG type wire	AWG 13 - AWG 16	AWG 13 - AWG 16	AWG 12 - AWG 10	AWG 12 - AWG 10
Ring/fork lug (W/d)*	max. 11mm/min. Ø4.3mm	max. 11mm/min. Ø4.3mm	max. 11mm/min. Ø4.3mm	max. 11mm/min. Ø4.3mm
Recommended torque	0.8 - 1Nm	0.8 - 1Nm	0.8 - 1Nm	0.8 - 1Nm

* Schaffner recommends the use of insulated and UL-recognized ring lugs or fork lugs of the appropriate size. Please visit www.schaffner.com to find more details on filter connectors.



**Headquarters and
global innovation and
development center**

Schaffner Group
Nordstrasse 11
4542 Luterbach
Switzerland
T +41 32 681 66 26
F +41 32 681 66 30
info@schaffner.ch
www.schaffner.com

Sales and application centers

China
Schaffner EMC Ltd. Shanghai
Building 11, Lane 1365
East Kangqiao Road
Shanghai 201319
T +86 21 6813 9855
F +86 21 6813 9811
cschina@schaffner.com
www.schaffner.com

Germany
Schaffner Deutschland GmbH
Schoemperlenstrasse 12B
76185 Karlsruhe
T +49 721 56910
F +49 721 569110
germanysales@schaffner.com

Finland
Schaffner Oy
Tynninkuja 7
08700 Lohja
T +358 19 35 72 71
F +358 19 32 66 10
finlandsales@schaffner.com

France
Schaffner EMC S.A.S.
112, Quai de Bezons
95103 Argenteuil
T +33 1 34 34 30 60
F +33 1 39 47 02 28
francesales@schaffner.com

Italy
Schaffner EMC S.r.l.
Via Galileo Galilei, 47
20092 Cinisello Balsamo (MI)
T +39 02 66 04 30 45/47
F +39 02 61 23 943
italysales@schaffner.com

Japan
Schaffner EMC K.K.
Mitsui-Seimei Sangenjaya Bldg. 7F
1-32-12, Kamiyama, Setagaya-ku
Tokyo 154-0011
T +81 3 5712 3650
F +81 3 5712 3651
japansales@schaffner.com
www.schaffner.jp

Sweden
Schaffner EMC AB
Turebergstorg 1, 6
19147 Sollentuna
T +46 8 5792 1121/22
F +46 8 92 96 90
swedensales@schaffner.com

Switzerland
Schaffner EMV AG
Nordstrasse 11
4542 Luterbach
T +41 32 681 66 26
F +41 32 681 66 41
sales@schaffner.ch

Singapore
Schaffner EMC Pte Ltd.
Blk 3015A Ubi Road 1
05-09 Kampong Ubi Industrial
Estate
T +65 6377 3283
F +65 6377 3281
singaporesales@schaffner.com

Spain
Schaffner EMC España
Calle Caléndula 93,
Miniparc III, Edificio E
El Soto de la Moraleja,
Alcobendas
28109 Madrid
T +34 618 176 133
spainsales@schaffner.com

Taiwan
Schaffner EMV Ltd.
6th Floor, No 413
Rui Guang Road
Neihu District
Taipei City 114
T +886 2 87525050
F +886 2 87518086
taiwansales@schaffner.com

Thailand
Schaffner EMC Co. Ltd.
Northern Region Industrial Estate
67 Moo 4 Tambon Ban Klang
Amphur Muang P.O. Box 14
Lamphun 51000
T +66 53 58 11 04
F +66 53 58 10 19
thailandsales@schaffner.com

UK
Schaffner Ltd.
5 Ashville Way
Molly Millars Lane
Wokingham
Berkshire RG41 2PL
T +44 118 9770070
F +44 118 9792969
uksales@schaffner.com
www.schaffner.uk.com

USA
Schaffner EMC Inc.
52 Mayfield Avenue
Edison, New Jersey 08837
T +1 732 225 9533
F +1 732 225 4789
usasales@schaffner.com
www.schaffner.com/us

To find your local partner within
Schaffner's global network, please go to

www.schaffner.com

May 2011

© 2011 Schaffner EMC.
Specifications subject to change without
notice. All trademarks recognized.

Schaffner is an ISO-registered company.
Its products are designed and manufac-
tured under the strict quality and environ-
mental requirements of the ISO 9001 and
ISO 14001 standards.

This document has been carefully
checked. However, Schaffner does not
assume any liability for errors or inac-
curacies.