

DC Feedthrough Capacitor



- IEC/EN 60384-14 approval
- Rated currents from 10 to 200A
- 2.5kV pulse test capability
- Class Y4 capacitor

Approvals

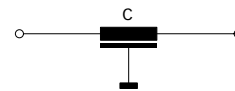


RoHS

Technical specifications

Maximum continuous operating voltage:	130VDC (UL, ENEC) 130VAC, 50/60Hz (UL, ENEC) 650VDC max.
Rated currents:	10 to 200A @ 60°C max.
Capacitor class:	Y4
High potential test voltage:	1700VDC for 2 sec
Insulation resistance (100VDC after 60 sec):	< 0.33µF, R > 1500MΩ > 0.33µF, τ > 5000s
Temperature range (operation and storage):	-40°C to +100°C (40/100/21)
Flammability corresponding to:	UL 94V-2 or better
MTBF @ 60°C/130V (Mil-HB-217F):	< 200A: > 1,400,000 hours ≥ 200A: > 450,000 hours

Typical electrical schematic



Feedthrough capacitors offer a high insertion loss across a broad band of frequencies from a few tens of kHz up to the GHz region. The construction of feedthrough capacitors cause a better suppression performance over a much wider frequency range than a conventional two-wire capacitor of equivalent value. Different versions are available offering a wide selection on operating currents and performance levels. DC feedthrough capacitors are designed and approved for 130VDC/130VAC 50/60Hz operation.

Features and benefits

- Very low internal series inductance.
- Very high self-resonant frequency.
- Self-healing dielectric.
- High quality and reliability.
- Through-bulkhead mounting.
- Anti-twist protection.
- Custom-specific or dual-versions on request.

Typical applications

- Power line filter for 48VDC battery power
- Increasing system and information security
- Telecom base stations
- Switching and cellular equipment
- Computer servers
- UPS power supplies
- Medical equipment

Feedthrough selector table

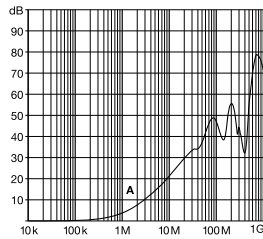
Feedthrough	Rated current @ 60°C [A]	Leakage current* @ 130VAC/50Hz [mA]	Capacitance** C [nF]	DC resistance*** R @ 25°C [mΩ]	Weight [g]
FN7560-10-M3	10	0.49	10	0.8	15
FN7562-16-M4	16	4.9	100	0.62	34
FN7563-16-M4	16	23	470	0.63	78
FN7562-32-M4	32	4.9	100	0.62	34
FN7563-32-M4	32	23	470	0.63	79
FN7560-63-M6	63	0.49	10	0.3	70
FN7561-63-M6	63	2.3	47	0.3	70
FN7562-63-M6	63	4.9	100	0.3	70
FN7563-63-M6	63	23	470	0.43	103
FN7560-100-M8	100	2.3	47	0.23	145
FN7561-100-M8	100	4.9	100	0.23	145
FN7562-100-M8	100	23	470	0.23	145
FN7563-100-M8	100	49	1000	0.25	192
FN7560-200-M10	200	4.9	100	0.16	160
FN7561-200-M10	200	23	470	0.16	160
FN7562-200-M10	200	49	1000	0.18	268
FN7563-200-M10	200	230	4700	0.14	490

* Tolerance +20%
 ** Tolerance ±20%
 *** Tolerance +15%

Typical filter attenuation

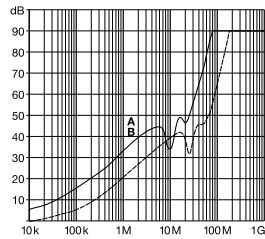
50Ω system

10A types



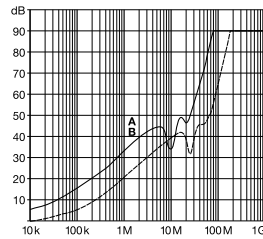
A = FN 7560-10-M3

16A types



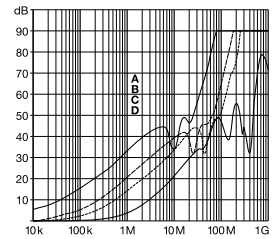
A = FN 7563-16-M4
 B = FN 7562-16-M4

32A types



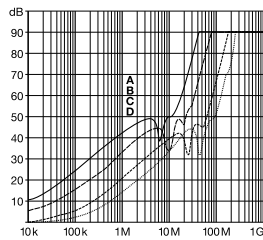
A = FN 7563-32-M4
 B = FN 7562-32-M4

63A types



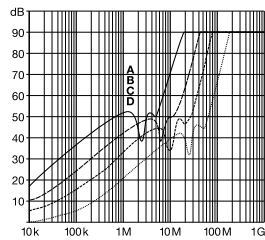
A = FN 7563-63-M6
 B = FN 7562-63-M6
 C = FN 7561-63-M6
 D = FN 7560-63-M6

100A types



A = FN 7563-100-M8
 B = FN 7562-100-M8
 C = FN 7561-100-M8
 D = FN 7560-100-M8

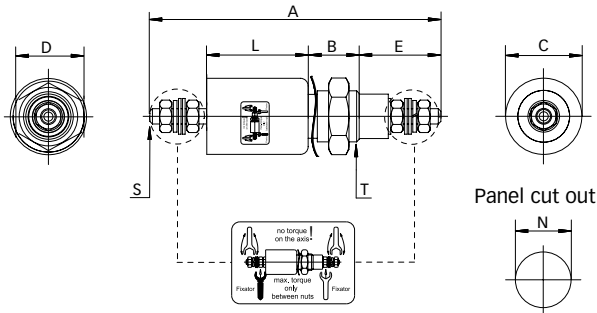
200A types



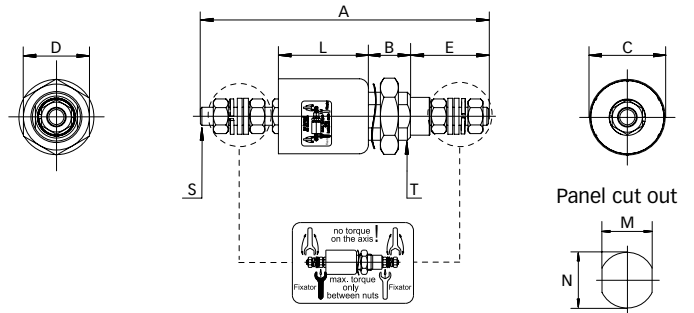
A = FN 7563-200-M10
 B = FN 7562-200-M10
 C = FN 7561-200-M10
 D = FN 7560-200-M10

Mechanical data

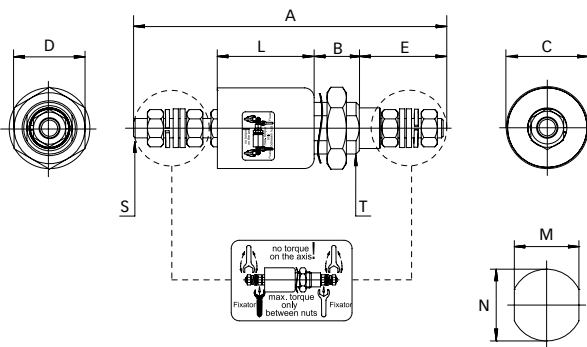
10A types



16 to 32A types



63 to 200A types



Dimensions

	A	B	C	D	E	L	M	N	S	T	
FN7560-10-M3	57	10	15	13	16	19		Ø10.3	M3	M10x1	
FN7562-16-M4	75	12	20	17	18	30	10.3	Ø12.3	M4	M12x1	
FN7563-16-M4	82	16	32	27	18	33	18.3	Ø20.3	M4	M20x1	
FN7562-32-M4	75	12	20	17	18	30	10.3	Ø12.3	M4	M12x1	
FN7563-32-M4	82	16	32	27	18	33	18.3	Ø20.3	M4	M20x1	
FN7560-63-M6	96	14	25	22	26	30	14.3	Ø16.3	M6	M16x1	
FN7561-63-M6	96	14	25	22	26	30	14.3	Ø16.3	M6	M16x1	
FN7562-63-M6	96	14	25	22	26	30	14.3	Ø16.3	M6	M16x1	
FN7563-63-M6	99	16	32	27	26	33	18.3	Ø20.3	M6	M20x1	
FN7560-100-M8	113	16	32	27	32	33	18.3	Ø20.3	M8	M20x1	
FN7561-100-M8	113	16	32	27	32	33	18.3	Ø20.3	M8	M20x1	
FN7562-100-M8	113	16	32	27	32	33	18.3	Ø20.3	M8	M20x1	
FN7563-100-M8	133	19	38	27	32	50	22.3	Ø24.3	M8	M24x1	
FN7560-200-M10	130	19	32	27	40	33	22.3	Ø24.3	M10	M24x1	
FN7561-200-M10	130	19	32	27	40	33	22.3	Ø24.3	M10	M24x1	
FN7562-200-M10	147	19	38	27	40	50	22.3	Ø24.3	M10	M24x1	
FN7563-200-M10	165	19	54	41	40	68	24.3	Ø27.3	M10	M27x1.5	
Tolerances	±2						±0.2				

All dimensions in mm; 1 inch = 25.4mm
Tolerances according: ISO 2768-m / EN 22768-m

Recommended torque

	M3	M4	M6	M8	M10	M10x1	M12x1	M16x1	M20x1	M24x1	M27x1.5
Terminal thread	0.5Nm	1.2Nm	2.5Nm	5Nm	8Nm						
Mounting thread						2Nm	3Nm	4Nm	7Nm	8Nm	12Nm

**Headquarters and
global innovation and
development center**

Schaffner Group
Nordstrasse 11
4542 Luterbach
Switzerland
T +41 32 681 66 26
F +41 32 681 66 30
info@schaffner.ch
www.schaffner.com

Sales and application centers

China
Schaffner EMC Ltd. Shanghai
T20-3, No 565 Chuangye Road
Pudong New Area
Shanghai 201201/China
T +86 21 3813 9500
F +86 21 3813 9501/02
cschina@schaffner.com
www.schaffner.com

Finland
Schaffner Oy
Tynninkuja 7
08700 Lohja
T +358 19 35 72 71
F +358 19 32 66 10
finlandsales@schaffner.com

France
Schaffner EMC S.A.S.
112, Quai de Bezons
95103 Argenteuil
T +33 1 34 34 30 60
F +33 1 39 47 02 28
francesales@schaffner.com

Germany
Schaffner Deutschland GmbH
Schoemperlenstrasse 12B
76185 Karlsruhe
T +49 721 56910
F +49 721 569110
germanysales@schaffner.com

Italy
Schaffner EMC S.r.l.
Via Galileo Galilei, 47
20092 Cinisello Balsamo (MI)
T +39 02 66 04 30 45/47
F +39 02 61 23 943
italysales@schaffner.com

Japan
Schaffner EMC K.K.
Mitsui-Seimei Sangenjaya Bldg. 7F
1-32-12, Kamiyama, Setagaya-ku
Tokyo 154-0011
T +81 3 5712 3650
F +81 3 5712 3651
japansales@schaffner.com
www.schaffner.jp

Sweden
Schaffner EMC AB
Turebergstorg 1, 6
19147 Sollentuna
T +46 8 5792 1121/22
F +46 8 92 96 90
swedensales@schaffner.com

Switzerland
Schaffner EMV AG
Nordstrasse 11
4542 Luterbach
T +41 32 681 66 26
F +41 32 681 66 41
sales@schaffner.ch

Singapore
Schaffner EMC Pte Ltd.
Blk 3015A Ubi Road 1
05-09 Kampong Ubi Industrial
Estate
T +65 6377 3283
F +65 6377 3281
singaporesales@schaffner.com

Spain
Schaffner EMC España
Calle Caléndula 93,
Miniparc III, Edificio E
El Soto de la Moraleja,
Alcobendas
28109 Madrid
T +34 618 176 133
spainsales@schaffner.com

Taiwan
Schaffner EMV Ltd.
6th Floor, No 413
Rui Guang Road
Neihu District
Taipei City 114
T +886 2 87525050
F +886 2 87518086
taiwansales@schaffner.com

Thailand
Schaffner EMC Co. Ltd.
Northern Region Industrial Estate
67 Moo 4 Tambon Ban Klang
Amphur Muang P.O. Box 14
Lamphun 51000
T +66 53 58 11 04
F +66 53 58 10 19
thailandsales@schaffner.com

UK
Schaffner Ltd.
5 Ashville Way
Molly Millars Lane
Wokingham
Berkshire RG41 2PL
T +44 118 9770070
F +44 118 9792969
uksales@schaffner.com
www.schaffner.uk.com

USA
Schaffner EMC Inc.
52 Mayfield Avenue
Edison, New Jersey 08837
T +1 732 225 9533
F +1 732 225 4789
usasales@schaffner.com
www.schaffner.com/us

To find your local partner within
Schaffner's global network, please go to

www.schaffner.com

December 2011

© 2011 Schaffner Group
Specifications are subject to change
without notice. The latest version of the
data sheets can be obtained from the
website. All trademarks recognized.

Schaffner is an ISO-registered company.
Its products are designed and manufac-
tured under the strict quality and environ-
mental requirements of the ISO 9001 and
ISO 14001 standards.

This document has been carefully checked.
However, Schaffner does not assume any
liability for errors or inaccuracies.