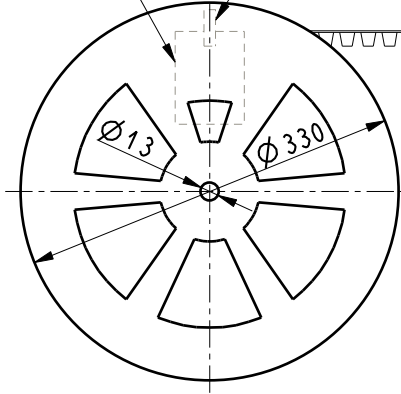
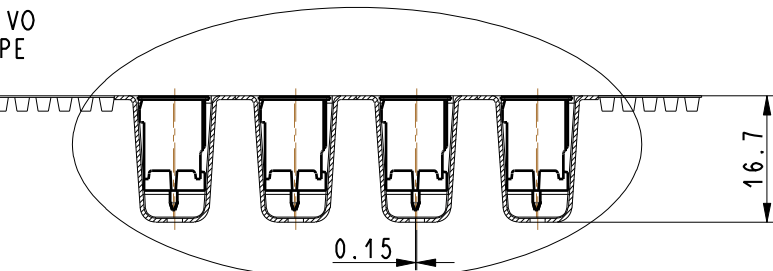


ETICHETTA LABEL
NASTRO ADESIVO ADHESIVE TAPE

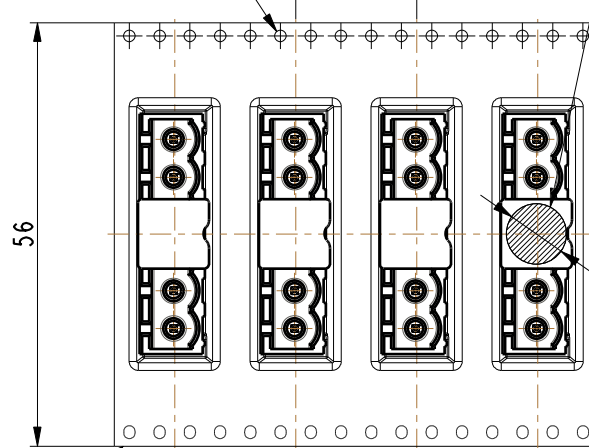


SCALA 1.000

FORI CILINDRICI SPROCKET HOLES



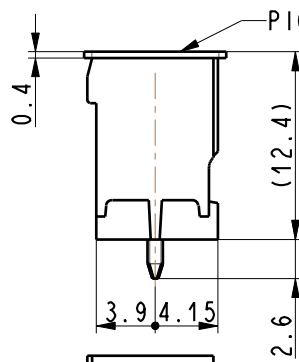
AREA PER PRELIEVO PICK & PLACE PAD AREA



2.5

TAPE DISEGNO: S19-00-146
TAPE DRAWING: S19-00-146
COD. TAPE: WICIM56D1
TAPE P/N: WICIM56D1

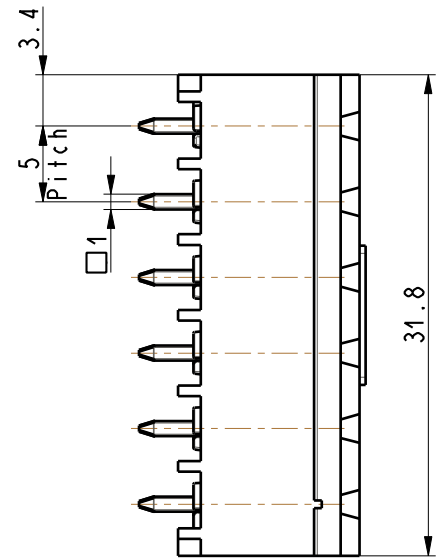
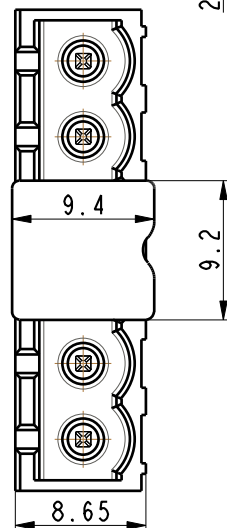
PICK & PLACE PAD



CIMH060P1-0V

Q.tà: 240 pz/bobina
Q.ty: 240 pcs/reel

SCALA 2.000



NOTE:

* CONFEZIONE SECONDO "IPC/JDEC J-STD-033"

- Sacchetto a barriera di umidità
- Indicatore livello di umidità
- Sacchetto argilla disidratante
- Foglio informativo
- Moisture-Sensitive-Devices

* PACKAGING ACCORDING TO "IPC/JDEC J-STD-033"

- Moisture barrier bag
- Humidity indicator
- Desiccant bag
- Moisture-Sensitive-Devices information

CODICE PN

KC IMH060P1TV

-	KIT: KC IMH060P1TV	PASSO/PITCH: -	-
FOGLIO/SHEET: 1/1	DIS. N° / DRAW. N°: KC IMH060P1TV	FIRMA/SIGNATURE: Biasio	DATA/DATE: 20-Sep-12

