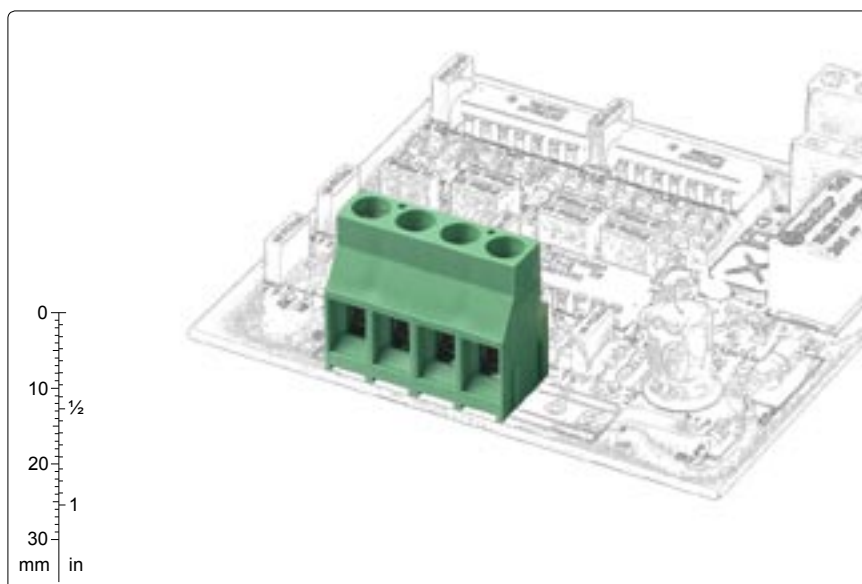


MSP**Functional Characteristics****Dimensional Class:***High***Standard Colour:***Green***Height:***21.5 mm (.846 in)***Max Approved Wire sections:***Solid: 6 mm² (IMQ); 10 AWG (UL)**Stranded: 4 mm² (IMQ); 10 AWG (UL)***Clamp Opening Size:***3.8 x 3.2 mm (.150 x .126 in)***Versions:***Modular***Single Mould Poles:***from 2 to 5***Pitches:***Imperial 6.35 mm, 9.52 mm, 12.7 mm**(.250 in, .375 in, 0.500 in)*

*pitch 6.35 mm
from 2 to 5 poles
straight, modular*



*pitch 9.52 mm
from 2 to 5 poles
Straight, modular*



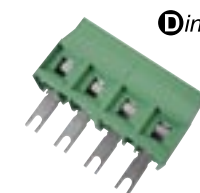
*pitch 12.7 mm
from 2 to 3 poles
Straight, modular*



*pitch 6.35 mm
from 2 to 5 poles
90°, modular*



*pitch 6.35 mm
from 2 to 5 poles
35°, modular*



*Design-in
custom configuration*



*Design-in
from 2 to 5 poles
straight, modular*

Brief Description

With the **MSP** modular series terminal blocks for PCBs, wires up to 6mm² (10 AWG) can be used and consequently a current range of 41A certified can be reached.

It is available in Imperial Pitches from 2.54 mm (.100 in) and from 5.08 mm (.200 in) in monolithic blocks from 2 to 12 poles, with insertion of the wire parallel, inclined at 35° or vertical in relation to the PCB.

All the housings are modular, therefore it is possible to compose the monolithic terminal blocks from 2 to 25 poles separately, or to compose the basic terminal blocks until any number of poles is obtained. By taking advantage of this particular characteristic a minimum stock of basic

terminal blocks can be kept.

It is simple to manage the product, the warehouse and the assembly with the Kit packages because several versions can be received with only one code, the part-numbers are significantly reduced and the risk of making mistakes is also reduced.

Characteristics of Components

M3.5 nickel plated Copper Alloy Screw.

PA 6.6.Polyamide Housing.

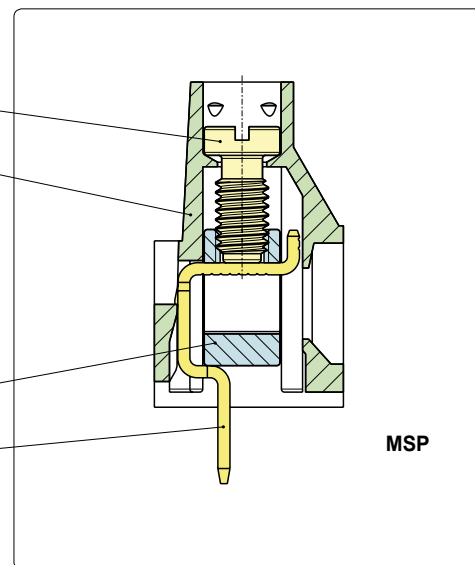
Standard Colour: GREEN.

V0 Self-extinguishing according to UL 94.

Chlorinated solvents resistant,
with no Phosphor, Dioxin or
dentrimental to health Halogens.

Nickel plated Copper Alloy Clamp

Easy to solder lead-free
tin-plated Copper Alloy Pin.



Mechanical characteristics

Recommended/Highest tightening torque	0.8/1.0 Nm (7/8.85 lbf in)
PCB Thickness:	max. 4 mm (.157 in)
PCB Hole Diameter:	min. 1.3 mm (.051 in)
Stripping length	7 ÷ 8 mm (.28 ÷ .31 in)
Operating temperature range	-40 °C ÷ +110 °C (-40 °F ÷ +230 °F)
Climatic category	40/110/21 According to EN 60068-1

Electric characteristics*

Solid wire section	30÷10 AWG (UL, CSA)* 0.05 ÷ 6 mm ² (IMQ)*
Stranded wire section	30÷10 AWG (UL, CSA)* 0.05 ÷ 4 mm ² (IMQ)*
Rated voltage for 6.35 mm (.250 in)	450 V (UL, CSA)*
Rated voltage for 9.52 mm (.375 in) and 12.7 mm (.500 in)	750 V (IMQ)*
Rated current	41 A (IMQ)*
Contact resistance	<15 mΩ
Insulation resistance	>10 ⁹ Ω (500V DC)

*All the above mentioned data refer to the highest values amongst the certificated ones.

V voltage, I current values and tightening torque are related to the norms to be applied to the product and to its use.

Approvals

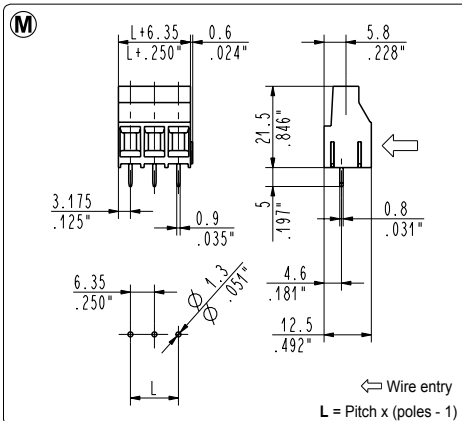
CE CE: 450 V - T 110 - 41 A - 6 mm² solid (32 A - 4 mm² stranded) for 6.35 mm (.250 in) pitch
750 V - T 110 - 41 A - 6 mm² solid (32 A - 4 mm² stranded) for 9.52 mm (.375 in) 12.7 mm (.500 in) pitch

UL UL: 300 V - 30 A - 30÷10 AWG for 6.35 mm (.250 in) pitch
File E 167473 600 V - 30 A - 30÷10 AWG for 9.52 mm (.375 in) and 12.7 mm (.500 in) pitch
Application values for end-use equipment have to be in accordance to UL norms and applicable to it.

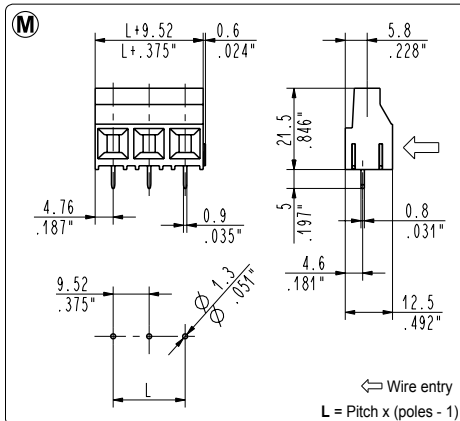
CSA CSA: 450 V - 32 A - 30÷10 AWG for 6.35 mm (.250 in) pitch
File LR 102896 600 V - 32 A - 30÷10 AWG for 9.52 mm (.375 in) pitch

VDE VDE: 450 V - 32 A - T 110 - 4 mm² for 6.35 mm (.250 in) pitch
Reg. N. 40001790 750 V - 32 A - T 110 - 4 mm² for 9.52 mm (.375 in) pitch

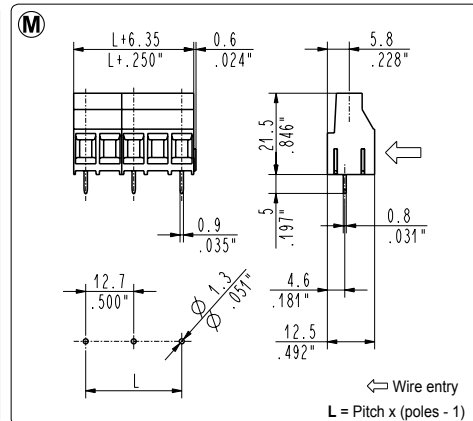
IMQ IMQ: 450 V - T 110 - 41 A - 6 mm² solid (32 A - 4 mm² stranded) for 6.35 mm (.250 in) pitch
File: CA02.00899 750 V - T 110 - 41 A - 6 mm² solid (32 A - 4 mm² stranded) for 9.52 mm (.375 in) pitch

**MSP_00S** Straight, Modular-Side Entry

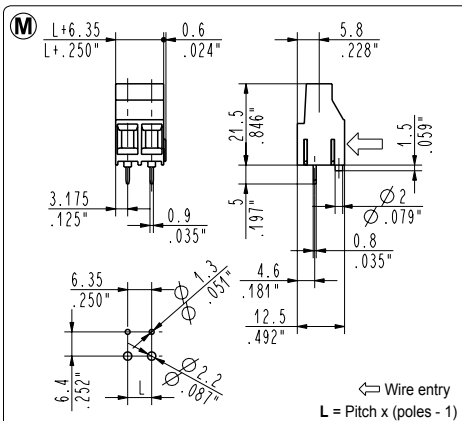
6.35 mm / .250" Pitch		Weight per pole: 3.08 g			
Poles	STD Code	Pcs/pack.	W [kg]*	Pcs/Ind.**	W [kg]*
02	MSP0200S	200	1,23	1000	6,16
03	MSP0300S	125	1,16	750	6,93
04	MSP0400S	100	1,23	500	6,16
05	MSP0500S	75	1,16	500	7,70

**MSP_00N** Straight, Modular-Side Entry

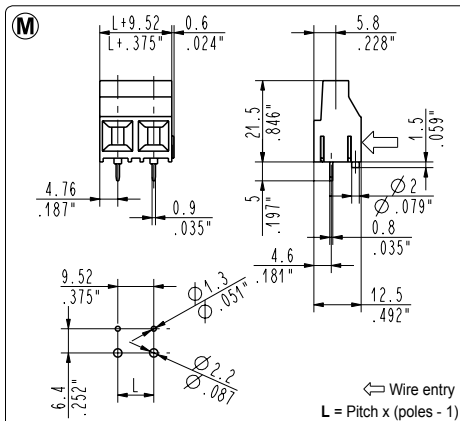
9.52 mm / .375" Pitch		Weight per pole: 3.53 g			
Poles	STD Code	Pcs/pack.	W [kg]*	Pcs/Ind.**	W [kg]*
02	MSP0200N	150	1,06	750	5,30
03	MSP0300N	100	1,06	500	5,30

**MSP_00U** Straight, Modular-Side Entry

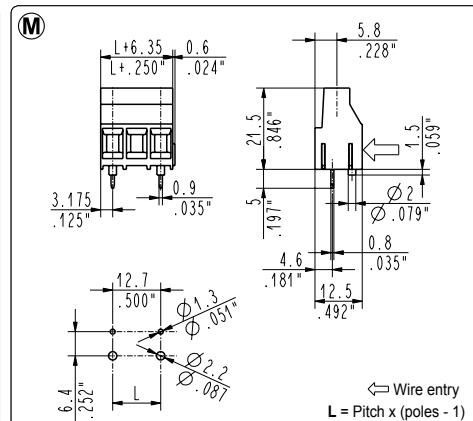
12.7 mm / .500" Pitch		Weight per pole: 3.68 g			
Poles	STD Code	Pcs/pack.	W [kg]*	Pcs/Ind.**	W [kg]*
01	MSP0100U	200	0,74	1000	3,68
02	MSP0200U	125	0,92	750	5,52
03	MSP0300U	75	0,83	500	5,52

**MSP_00S-0000P** Straight with Vde Pegs, Side Entry

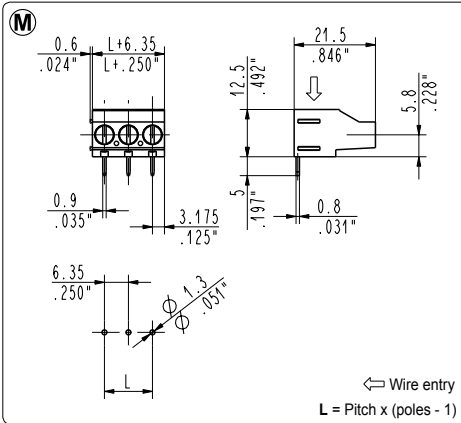
6.35 mm / .250" Pitch		Weight per pole: 3.08 g			
Poles	STD Code	Pcs/pack.	W [kg]*	Pcs/Ind.**	W [kg]*
02	MSP0200S-0000P	200	1,23	1000	6,16
03	MSP0300S-0000P	125	1,16	750	6,93

**MSP_00N-0000P** Straight with Vde Pegs, Side Entry

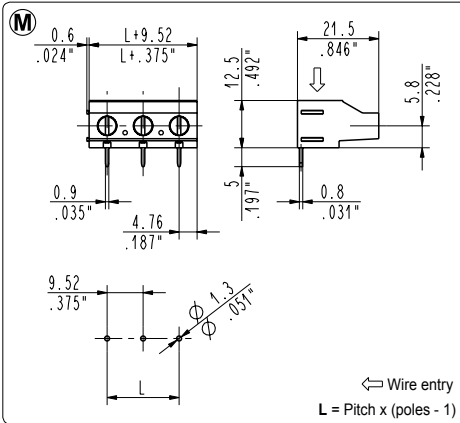
9.52 mm / .375" Pitch		Weight per pole: 3.53 g			
Poles	STD Code	Pcs/pack.	W [kg]*	Pcs/Ind.**	W [kg]*
02	MSP0200N-0000P	150	1,06	750	5,30
03	MSP0300N-0000P	100	1,06	500	5,30

**MSP_00U-0000P** Straight with Vde Pegs, Side Entry

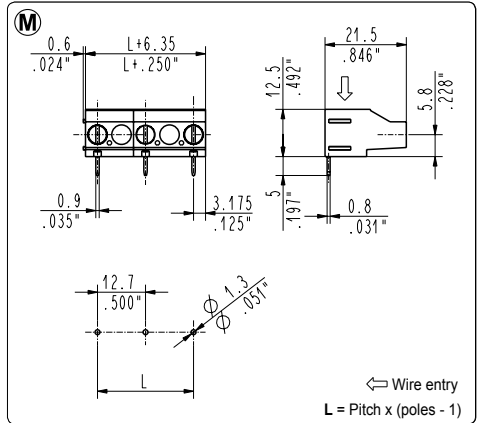
12.7 mm / .500" Pitch		Weight per pole: 3.68 g			
Poles	STD Code	Pcs/pack.	W [kg]*	Pcs/Ind.**	W [kg]*
02	MSP0200U-0000P	125	0,92	750	5,52
03	MSP0300U-0000P	75	0,83	500	5,52

**MSP_09S 90° Modular, Top Entry**

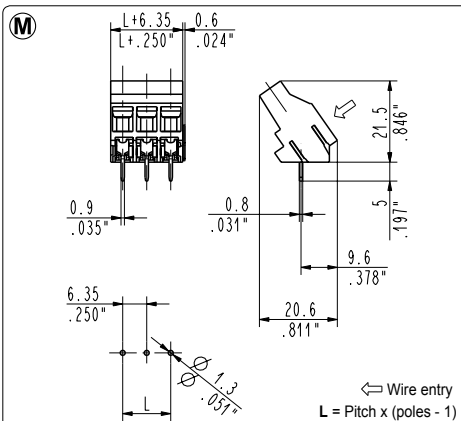
6.35 mm / .250" Pitch		Weight per pole: 3.08 g			
Poles	STD Code	Pcs/pack.	W [kg]	Pcs/Ind.**	W [kg]
02	MSP0209S	200	1,23	1000	6,16
03	MSP0309S	125	1,16	750	6,93
04	MSP0409S	100	1,23	500	6,16
05	MSP0509S	75	1,16	500	7,70

**MSP_09N 90° Modular, Top Entry**

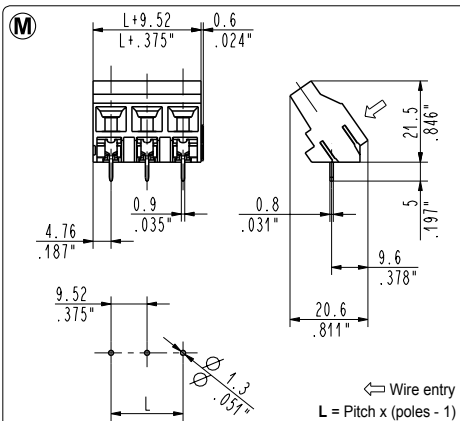
9.52 mm / .375" Pitch		Weight per pole: 3.53 g			
Poles	STD Code	Pcs/pack.	W [kg]	Pcs/Ind.**	W [kg]
02	MSP0209N	150	1,06	750	5,30
03	MSP0309N	100	1,06	500	5,30

**MSP_09U 90° Modular, Top Entry**

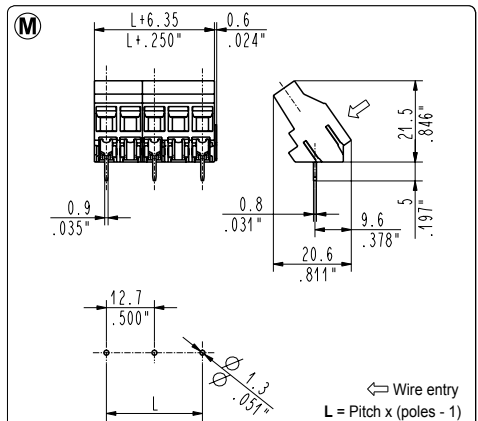
12.7 mm / .500" Pitch		Weight per pole: 3.68 g			
Poles	STD Code	Pcs/pack.	W [kg]	Pcs/Ind.**	W [kg]
01	MSP0109U	200	0,74	1000	3,68
02	MSP0209U	125	0,92	750	5,52
03	MSP0309U	75	0,83	500	5,52

**MSP_04S 35° Modular, Angled Entry**

6.35 mm / .250" Pitch		Weight per pole: 3.23 g			
Poles	STD Code	Pcs/pack.	W [kg]	Pcs/Ind.**	W [kg]
02	MSP0204S	200	1,29	1000	6,46
03	MSP0304S	125	1,21	750	7,27

**MSP_04N 35° Modular, Angled Entry**

9.52 mm / .375" Pitch		Weight per pole: 3.64 g			
Poles	STD Code	Pcs/pack.	W [kg]	Pcs/Ind.**	W [kg]
02	MSP0204N	125	0,91	750	5,46
03	MSP0304N	75	0,82	500	5,46

**MSP_04U 35° Modular, Angled Entry**

12.7 mm / .500" Pitch		Weight per pole: 3.68 g			
Poles	STD Code	Pcs/pack.	W [kg]	Pcs/Ind.**	W [kg]
01	MSP0104U	200	0,74	1000	3,68
02	MSP0204U	125	0,92	750	5,52