

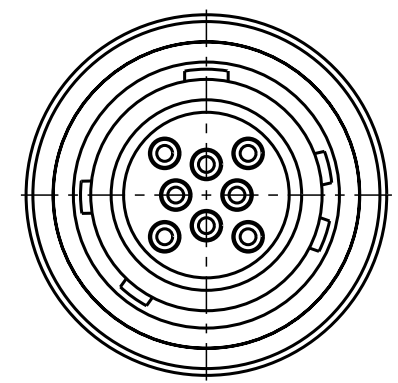
Für diese Unterlage behalten wir uns alle Rechte vor, auch für den Fall der Patentierung oder Gebrauchsmusteranmeldung. Sie darf ohne unsere vorherige schriftliche Zustimmung weder vervielfältigt noch sonstwie benutzt, noch Drucken zugänglich gemacht werden.

Nur rot gestempelte oder auf Laufr Karte gedruckte Dokumente unterliegen dem Änderungsdienst und sind zur Fertigung freigegeben. Only red stamped or on job card printed documents are managed. These documents are approved for production.

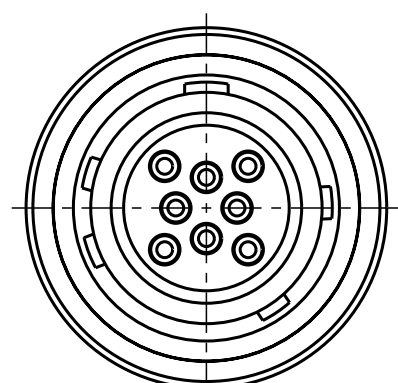
All Rights reserved, including possible patents or trademarks. Documents shall not be provided to a third party or duplicated in any form without prior written permission.

CAD: Pro/ENGINEER

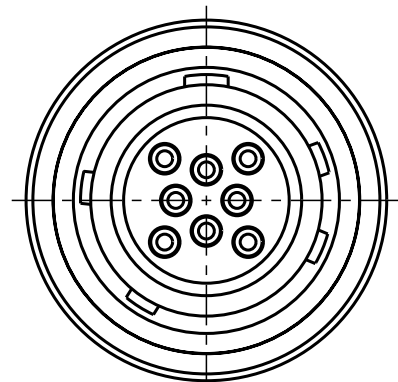
Additional coding
View in direction B
3:1



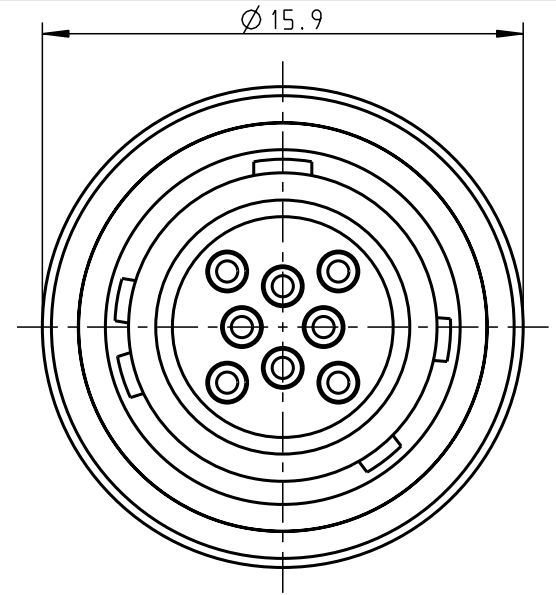
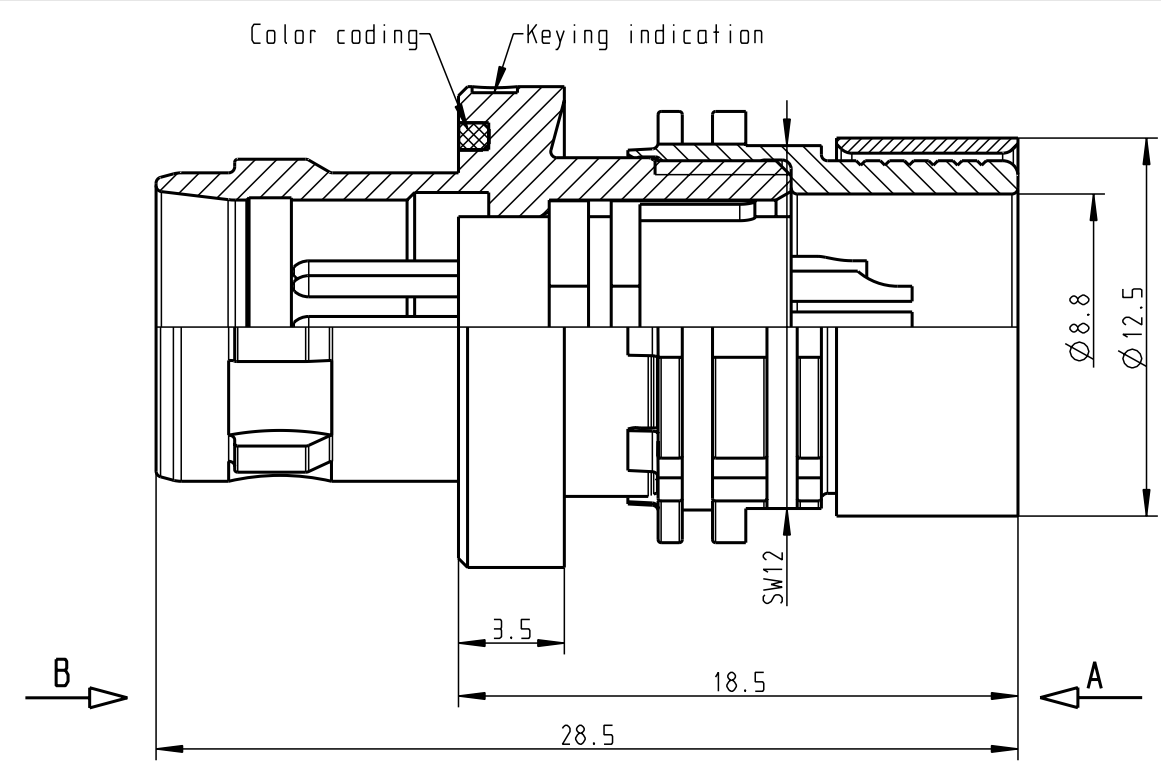
A1AYBR-PD8XFD0-0000
Mechanical coding: B
Color coding: red



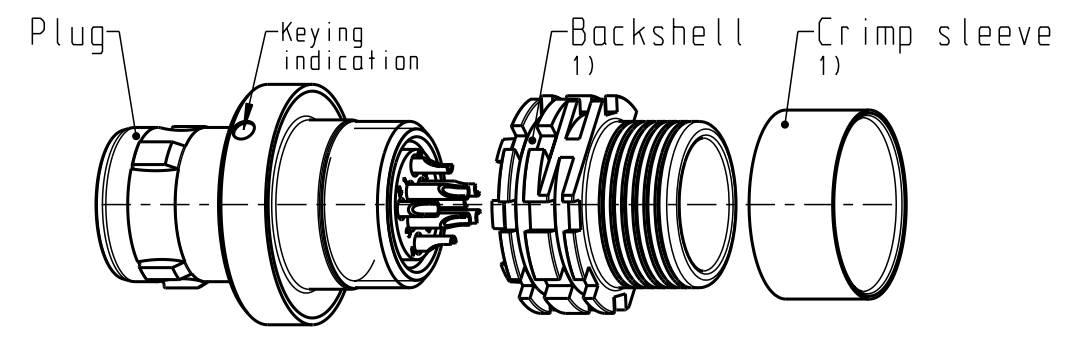
A1AYCR-PD8XFD0-0000
Mechanical coding: C
Color coding: blue



A1AYDR-PD8XFD0-0000
Mechanical coding: D
Color coding: green



A1AYAR-PD8XFD0-0000
Mechanical coding: A
Color coding: light brown



Delivery condition
2:1

Technical information

- Max. cable Ø8.0mm (Based on cable with one braided shield)
- Solder contacts: AWG26
- Current load: 7A@Δ+40° (Single contact)
4.55A@Δ+40° (Insert)
- Test voltage: 1200V (acc. SAE AS 13441:1998, Contact to contact)
- Rated voltage: 400V (acc. SAE AS 13441:1998) 2)
- Information technology: CAT 5 (acc. IEC 11801)
- *usable for: - Gigabit-Ethernet
- Fast-Ethernet
- and other equivalent protocols
- *differential pairs: - Insertion loss better -0.1dB @100MHz
- Return loss better -35dB @100MHz
- NEXT better -55dB @100MHz
(testreport on request)

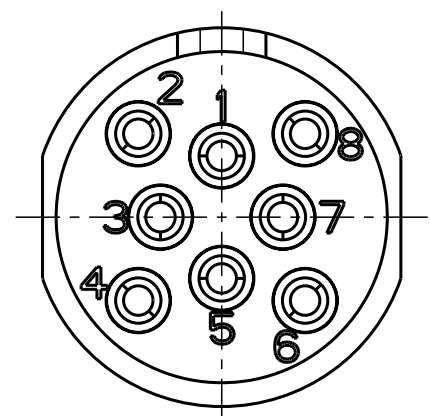
- For more technical information and accessories see catalogue (www.odu.de/amc)

1) For crimp information, torque, etc. see assembly instruction 010.645.001.000.004 (www.odu.de/amc/assembly)


2) Maximal operating voltage at sea level up to 2.000m. Rated voltage applies no other electrical safety standard. In case other standards rule a specific use of the connector, the application specific safety criteria shall be considered first. This must be evaluated in the frame of equipment engineering.

Connection diagram	
pos	color
1	white/green
2	green
3	white/brown
4	brown
5	white/blue
6	blue
7	white/red
8	red

Only insert
View in direction A
6:1



All shown connectors are according to DIN EN 61984:2009 connectors without breaking capacity (COC) !

index				notice		date		name		Dimensions without tolerances acc. to middle DIN ISO 2768		PE-modell-nr.:	
												CAD-nr.: 00050205 sheet.:	
										2011 date name		designation:	
										prep. 15.09. M. Meier		Break-Away Plug AMC Standard Version	
										app.		scale: 4:1	
										norm.		drawing nr.:	
										 otto dunkel gmbh		A1AY.R-PD8XFD0-0000	
										replacement for:		copy nr.:	