

Time of Flight Hardware Evaluation Kit

General Description

The epc600/610 evaluation kit is a fully assembled and tested circuit for evaluation of the epc600 and epc610 Time of Flight (TOF) products. It consists of a main board which provides all hardware to operate epc600 and epc610 camera modules that come in different configurations.

The main board is divided in two independent sections. The main section is equipped with a STM32 ARM Cortex micro controller. This section provides a powerful and flexible development environment for the design engineer. It supports all available camera modules and works with both, the epc600 TOF Range Finder and the epc610 TOF Camera Chip.

The second part of the main board is equipped with a PIC10F206 micro controller. It serves as a standalone demonstration system and has a simple distance gage application implemented. It works with the epc600 Range Finder product only.

The separate camera modules come either with epc600 TOF Range Finder chips or with epc610 TOF Imager chips. The modules include active LED illumination, a complete lens system and have a cable interface to the main board, allowing a flexible and convenient placement in a lab setup. The modules are available with $\pm 1^\circ$ and $\pm 4.6^\circ$ field of view (diagonal).

Features

- Complete development system for applications using epc600 TOF Range Finders and epc610 TOF Imagers
- Dual controller environment with STM32 and PIC10F206 micro controllers
- Different camera modules with either epc600 or epc610 chips
- Push button and indicator LED's for standalone operation
- PC connectivity and power supply by USB
- User software (PC/Mac) with visualization and logging features

Kit content

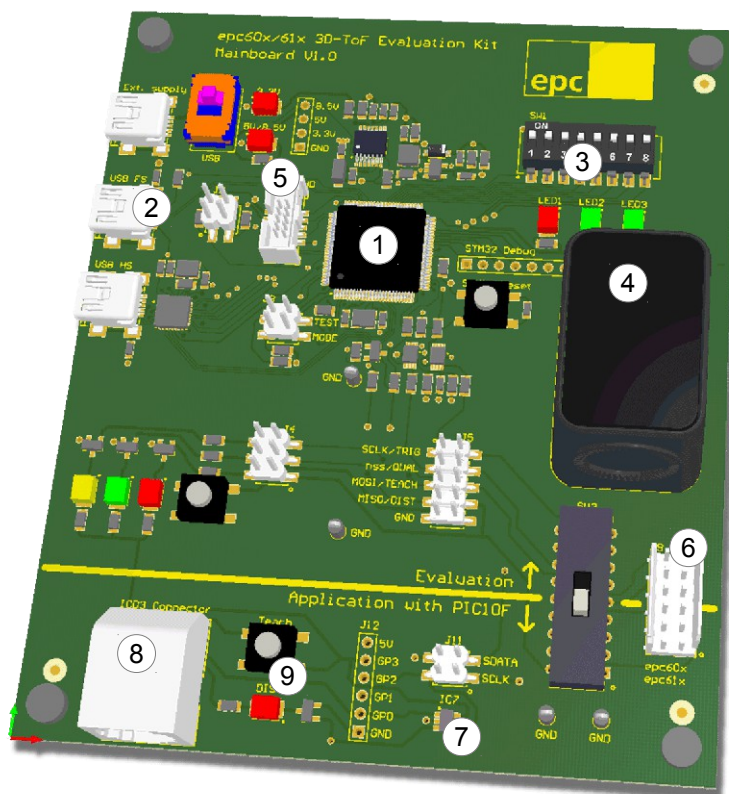
- Main board with dual controller hardware
- One camera module with either epc600 TOF Range Finder or epc610 TOF Imager. Additional modules available separately
- GUI software for PC and Mac
- Documentation

Hardware Overview

- ① STM32 ARM Cortex controller
- ② USB connectors
- ③ Dip switch and LED bank
- ④ Camera module
- ⑤ 10 pin Cortex debug connector
- ⑥ Camera module connector
- ⑦ PIC10F206 controller
- ⑧ ICD3 In-Circuit debugger interface
- ⑨ Push-button / LED interface



epc600/610 Camera module



Net price epc600/610 - Evaluation Kit CHF 1650.00

Includes either epc600 camera module with $\pm 1^\circ$ FOV or epc610 camera module with $\pm 4.6^\circ$ FOV
Additional camera modules CHF 360.00