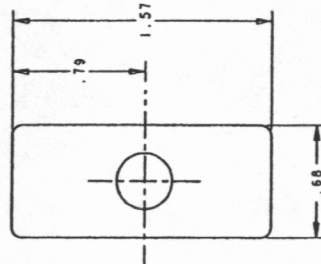
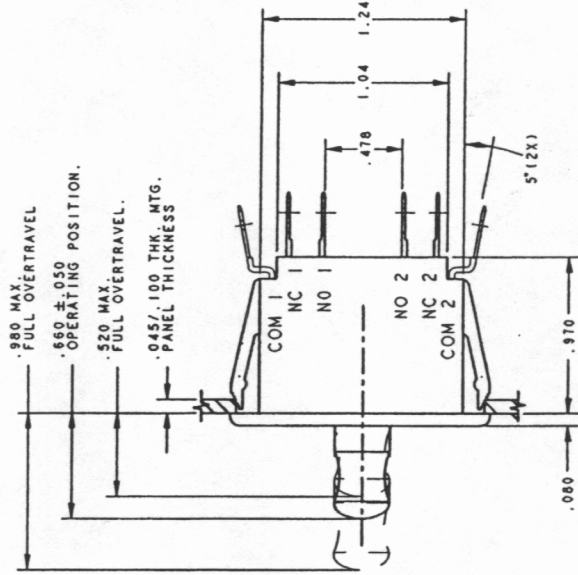
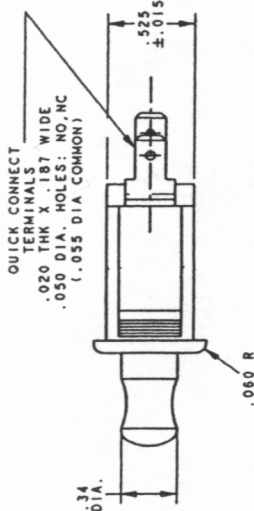


PANEL CUTOUT DETAIL



SWITCH CHARACTERISTICS

REST POSITION	.730 TO .790
PRETRAVEL	.125 MAX.
OVERTRAVEL	.100 MIN.
MOVE. DIFF.	.075 MAX.
OPER. FORCE	.737 GRAMS MAX.
RELEASE FORCE	.113 GRAMS MIN.

CHEAT INTERLOCK CHARACTERISTICS

OPERATING POSITION	.800 TO .900
PRETRAVEL	.155 MAX.
OVERTRAVEL	.030 MIN.
MOVE. DIFF.	.090 MAX.
OPER. FORCE	.567 GRAMS MAX.

ELECTRICAL RATING

10 AMPS 125/250 VAC
1/3 H.P., 125/250 VAC

UL RECOGNIZED AND CSA CERTIFIED,
VDE APPROVED

PRELIMINARY

DATE: 23-01-02
GILBERT
ELECTRICAL PRODUCTS
7700 W. 77th Street
MILWAUKEE, WI 53222

THE CONFIDENTIAL AND PROPRIETARY INFORMATION CONTAINED IN THIS DOCUMENT IS THE PROPERTY OF GILBERT ELECTRIC PRODUCTS. NO PART OF THIS DOCUMENT IS TO BE REPRODUCED OR TRANSMITTED IN ANY FORM OR BY ANY MEANS, ELECTRONIC OR MECHANICAL, INCLUDING PHOTOCOPYING, RECORDING, OR BY ANY INFORMATION STORAGE AND RETRIEVAL SYSTEM, WITHOUT PERMISSION IN WRITING FROM GILBERT ELECTRIC PRODUCTS.

DESIGNER	J. DOLBIS
APP'D	RC
DATE	23-Dec-02
SCALE	2:1
TOLERANCE UNLESS SPECIFIED	
FINISH	AS SHOWN
UNIT	INCHES
MARKET	02-1120

REV	1	DATE	23-DEC-02	BY	RC
REV	2	DATE	01-03-02	BY	RC
REV	3	DATE	01-03-02	BY	RC
REV	4	DATE	01-03-02	BY	RC
REV	5	DATE	01-03-02	BY	RC

C ITEM NO. F7966A
SCALE: 2:1
SH 1 OF 1

SPEC DRAWING

ORIGINAL ON FILE