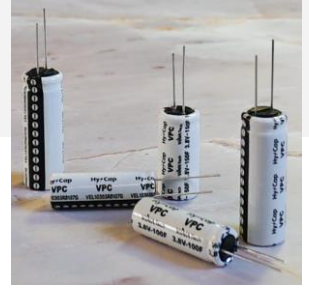


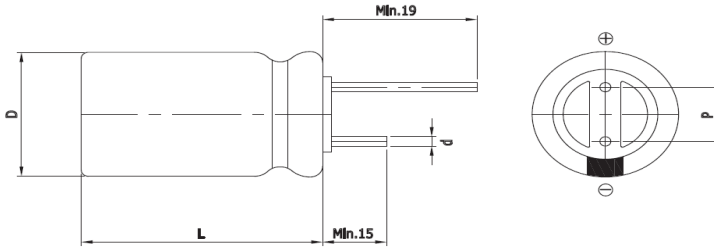
Features

VPC (Vina Pulse Capacitor)

- Low Self Discharge
- High Operating Voltage
- Wide Operating Temperature Range
- High Capacitance



Drawing



| Size | 1840 |
|--------|---------------|
| D (Φ) | 18.0 +1.0 Max |
| L (mm) | 40.0 ±1.5 |
| d (Φ) | 0.8 ±0.1 |
| P (mm) | 7.5 ±0.5 |

Specification Draft

| Item | Spec. value | Test methods |
|-------------------------|--|--|
| Operating Voltage Range | 2.5V to 3.8V (2.5V to 3.5V @ 85°C) | |
| Operating Temp. Range | -25 ~ 85°C (-40 ~ 85°C @ in Li/SOCL2 battery system) | |
| Capacitance Tolerance | 0 ~ +30% | |
| Load Life @ 70°C, 3.8V | Capacitance : ± 30% of initial value ESR : Less than 200% of initial spec. Appearance : No abnormality | Temperature: 70±2°C, 85±2°C Time : 1,000 hours Voltage : 3.8V, 3.5V and measure the floating charge characteristics after returning to normal temperature and humidity. |
| Load Life @ 85°C, 3.5V | | |
| Temperature Cycle | Appearance : No abnormality | Temperature: 85±2°C, -40±2°C Duration: 30 min / Numbers: 100 times |
| Cycle Life | | 100% DOD 50% DOD 1% DOD |
| | | 20,000Cycle 100,000Cycle 500,000Cycle |
| | | Temperature : 25±2°C Cut-off Voltage : 2.5V |
| Shelf life | Capacitance : ≤ 10% of initial value ESR : Less than 100% of initial spec. | Temp. : below 25°C, No Electrical Charge, Time : 3 years *VPC recommends charging at rated voltage every six months |

| Part Number | Rated Voltage (V) | Rated Capacitance (F) | ESR _{DC} (mΩ) | ESR _{AC} (mΩ) | Leakage Current (μA) | Self Discharge (V) | Rated Current (A) | Pulse Current (A) | Weight (g) |
|----------------|-----------------------------|-----------------------|------------------------|------------------------|----------------------|-----------------------|-------------------|-------------------|------------|
| VEL18403R8757G | 3.8 Surge Voltage (4.0V) | 750 @ 25°C #1 | 50 @ 25°C 100msec | 25 @ 25°C 1kHz | - @ 25°C 72hr | Over 97% @ 25°C #1 | 1.4 @ 25°C | 13.0 @ 25°C #2 | 17.7±0.2 |

#1 Reference IEC62813 4.2
#2 1sec. Discharge to 3.2V

* WARNING : precautions must be taken to ensure that device leads are not shorted