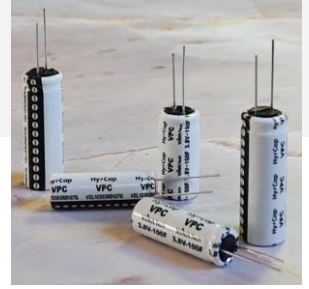


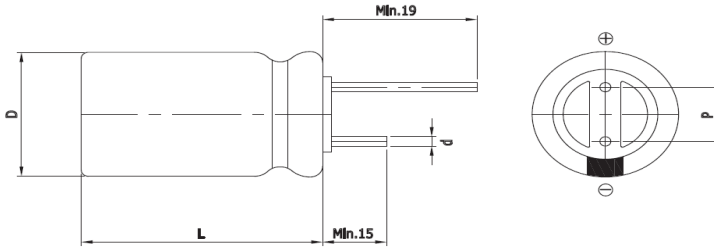
Features

VPC (Vina Pulse Capacitor)

- Low Self Discharge
- High Operating Voltage
- Wide Operating Temperature Range
- High Capacitance



Drawing



Size	1865
D (Φ)	18.0 +1.0 Max
L (mm)	65.0 ±1.5
d (Φ)	0.8 ±0.1
P (mm)	7.5 ±0.5

Specification Draft

Item	Spec. value	Test methods									
Operating Voltage Range	2.5V to 3.8V (2.5V to 3.5V @ 85°C)										
Operating Temp. Range	-25 ~ 85°C (-40 ~ 85°C @ in Li/SOCL2 battery system)										
Capacitance Tolerance	0 ~ +30%										
Load Life @ 70°C, 3.8V	Capacitance : ≤ 30% of initial value ESR : Less than 200% of spec. Appearance : No abnormality	Temperature: 70±2°C, 85±2°C Time : 1,000 hours Voltage : 3.8V, 3.5V and measure the floating charge characteristics after returning to normal temperature and humidity.									
Load Life @ 85°C, 3.5V											
Temperature Cycle											
Cycle Life		<table border="1"> <thead> <tr> <th>Temperature: 85±2°C, -40±2°C</th> <th>Duration: 30 min / Numbers: 100 times</th> <th></th> </tr> </thead> <tbody> <tr> <td>100% DOD</td> <td>50% DOD</td> <td>1% DOD</td> </tr> <tr> <td>20,000Cycle</td> <td>100,000Cycle</td> <td>500,000Cycle</td> </tr> </tbody> </table>	Temperature: 85±2°C, -40±2°C	Duration: 30 min / Numbers: 100 times		100% DOD	50% DOD	1% DOD	20,000Cycle	100,000Cycle	500,000Cycle
Temperature: 85±2°C, -40±2°C	Duration: 30 min / Numbers: 100 times										
100% DOD	50% DOD	1% DOD									
20,000Cycle	100,000Cycle	500,000Cycle									
Shelf life	Capacitance : ≤ 10% of initial value ESR : Less than 100% of spec.	Temp. : below 25°C, No Electrical Charge, Time : 3 years *VPC recommends charging at rated voltage every six months									

Part Number	Rated Voltage (V)	Rated Capacitance (F) #1	ESR _{DC} (mΩ)	ESR _{AC} (mΩ)	Leakage Current (μA)	Self Discharge (V) #1	Rated Current (A)	Pulse Current (A) #2	Weight (g)
VEL18653R8128G	3.8 Surge Voltage (4.0V)	1200 @ 25°C #1	40 @ 25°C 100msec	20 @ 25°C 1kHz	- @ 25°C 72hr	Over 97% @ 25°C #1	2.4 @ 25°C	22 @ 25°C #2	30.0±0.2

#1 Reference IEC62813 4.2
#2 1sec. Discharge to 3.2V

* WARNING : precautions must be taken to ensure that device leads are not shorted