

- Cable assemblies
- D-Sub / Hoods Centronics
- Multiflex - DIN41651
- Modular
- USB IEEE1394
- Switches
- Powercords Powerlets
- DIN41612 Hardmetric
- MiniDIN
- Sockets / Strips Jumper
- Terminal Blocks
- Memory Card
- FFC / FPC

Die Firma ASSMANN WSW components bietet unter der Produktbezeichnung 'MULTIFLEX' eine breite Produktpalette von Schneidklemmsteckverbindern, die entsprechend der DIN 41651 hergestellt wird.

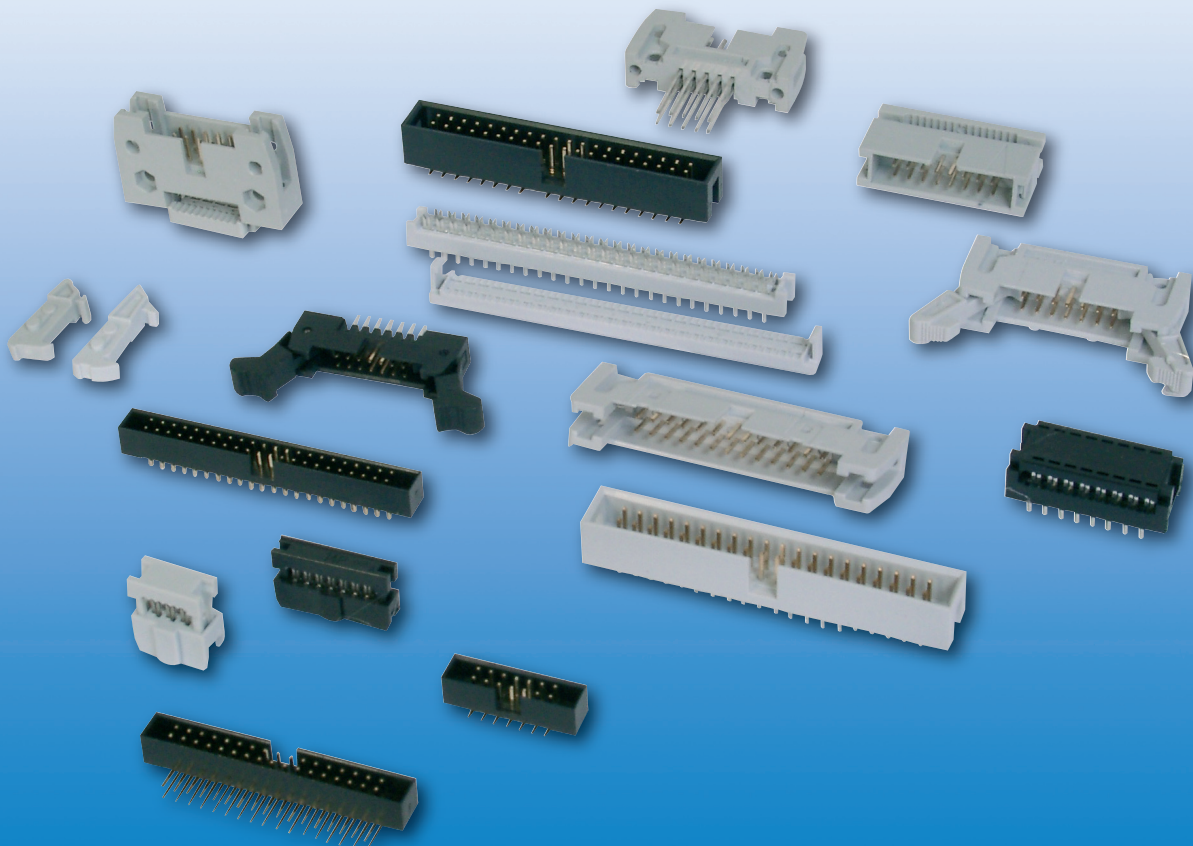
Diese Produkte finden ihren Einsatz in nahezu allen Anwendungsbereichen, angefangen vom Computer-, Industrie-, und Telekommunikationmarkt, bis hin zum Automobilhersteller. Diese Produkttechnologie ermöglicht die kostengünstige Verbindung von Leiterplatten über lösbare und nicht lösbare Kabelkonfektionen in einer über Jahrzehnten erprobten Verarbeitungsweise. Hierbei sind die Kontakte der Kabelverbinder mit Schneidklemmkontakten versehen, die durch ihr Design beim Verpressen des Kabels mit dem Kontakt eine gasdichte Verbindung ergeben.

Neben dem traditionell stark genutzten Kontaktraster von 2.54 mm sind diese Steckverbinder auch im Raster 2,00 mm erhältlich. Das verwendete Kabel weist hierbei ein Raster von 1,27 mm bzw. 1,00 mm auf. Bei dieser Produktfamilie entfällt das ansonsten kostenintensive Abisolieren, Verzinnen, Vercrimpen und Stecken eines einzelnen Kabelstrangs, wie beim Crimpen üblich. Die Gehäuse sind mit einer Mittenpolarisation ausgestattet, die gegen ein Verdrehen des Steckers im Gegenstück unmöglich macht. Die Produkte sind maschinell, aber auch mit einfachsten Handhebelpressen zu verarbeiten.

ASSMANN WSW components offers under the product family 'MULTIFLEX' a full range of IDC connectors, produced according to DIN 41651.

Those products are used in more or less every known application within computer-, industrial-, telecommunication and specific automotive markets. This product technology allows cost effective connections between printed circuit boards based on removable or permanent connections based on a longterm proofed way of assembly. Contact concept of MULTIFLEX cable connectors is designed for insulation displacement proof for gas-tight connection.

MULTIFLEX connectors are available with the traditionally used pitch of 2,54 mm and the pitch of 2,00 mm. The specified cable do have 1,27 mm pitch and 1,00 mm pitch. Using IDC technology compared with crimp technology a lot of advantage become obviously, eg.: no stripping, soldering, crimping or stitching of single cable strands. The insulator housing does show a center polarization, which avoids mating failures. Assembly can be done automatic, semiautomatic and with simplest hand press tools.



**Produktbeschreibung**

Seite

IDC-Pfostenverbinder, im Raster 2.54 x 2.54 mm	76
IDC-Pfostenverbinder, im Raster 2.00mm x 2.00mm	77
Steckerleisten, gerade, Raster 2.54mm x 2.54mm	78
Steckerleisten, abgewinkelt, Raster 2.54mm x 2.54mm	79
IDC-Steckerleisten, Raster 2.54mm	80
IDC-Wannen-Leisten, Raster 2.54mm	81
Steckerleisten, gerade, Raster 2.54mm x 2.54mm	82
Steckerleisten, abgewinkelt, Raster 2.54mm x 2.54mm	83
Steckerleisten, Raster 2.54mm x 2.54mm, SMD	84
Steckerleisten, gerade, Raster 2.00mm x 2.00mm	85
Steckerleisten, abgewinkelt, Raster 2.00mm x 2.00mm	86
Steckerleisten, Raster 2.00mm x 2.00mm, SMD	87
IDC-Leiterplattenverbinder, Raster 2.54mm	88
IDC-Leiterplattenverbinder, Raster 2.00mm	89
Steckerleisten, gerade, Raster 2.00mm x 7.62mm	90
Flachbandkabel AWG 28, Grau oder Farbig, Raster 1.27mm	91
Flachbandkabel AWG 28, Grau, Raster 1.00mm	93

**Product description**

page

IDC-sockets, pitch 2.54 x 2.54 mm	76
IDC-sockets, pitch 2.00mm x 2.00mm	77
Header, straight, pitch 2.54mm x 2.54mm	78
Header, right-angled, pitch 2.54mm x 2.54mm	79
IDC-Header, pitch 2.54mm	80
IDC-Boxheader, pitch 2.54mm	81
Header, straight, pitch 2.54mm x 2.54mm	82
Header, right-angled, pitch 2.54mm x 2.54mm	83
Header, pitch 2.54mm x 2.54mm, SMD	84
Header, straight, pitch 2.00mm x 2.00mm	85
Header, right-angled, pitch 2.00mm x 2.00mm	86
Header, pitch 2.00mm x 2.00mm, SMD	87
IDC-Transition connector, pitch 2.54mm	88
IDC-Transition connector, pitch 2.00mm	89
Header, straight, pitch 2.00mm x 7.62mm	90
Flat cable AWG 28, grey or coloured, pitch 1.27mm	91
Flat cable AWG 28, grey, pitch 1.00mm	93



Cable assemblies

D-Sub / Hoods  
Centronics

Multiflex -  
DIN41651

Modular

USB  
IEEE1394

Switches

Powercords  
Powerinlets

DIN41612  
Hardmetric

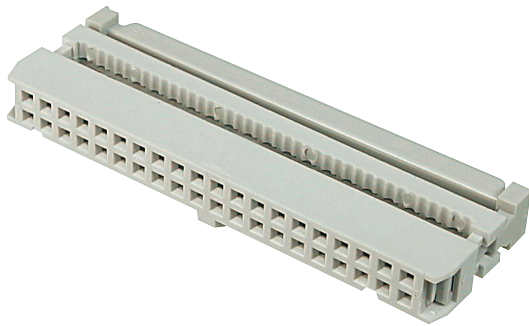
MiniDIN

Sockets / Strips  
Jumper

Terminal Blocks

Memory Card

FFC / FPC



**Isolierkörpermaterial**  
PBT, UL94V-0

**Kontaktmaterial**  
Messing

**Kontaktoberfläche**  
Ni, Au / Sn

**Kontaktwiderstand**  
20mΩ max

**Isolationswiderstand**  
1000MΩ min

**Strombelastbarkeit**  
3A

**Betriebstemperatur**  
-40°C - +105°C

**Betriebsspannung**  
250V AC

**Prüfspannung**  
1000V AC/DC

**Verpackung**  
Blisterverpackung

**Insulator material**  
PBT, UL94V-0

**Contact material**  
Brass

**Plating**  
Ni, Au / Sn

**Contact resistance**  
20mΩ max

**Insulation resistance**  
1000MΩ min

**Current rating**  
3A

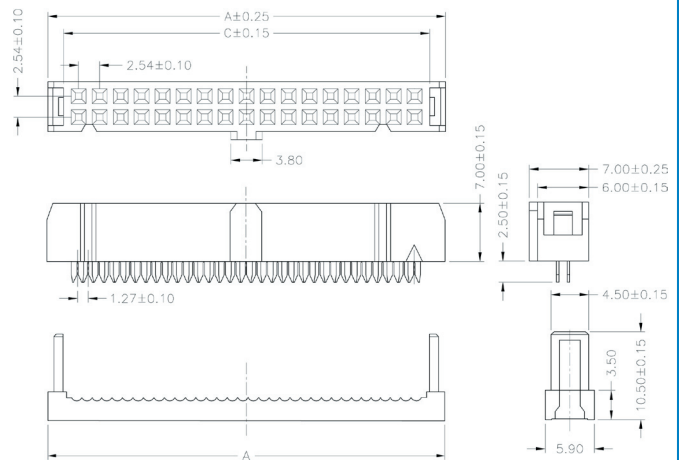
**Operating temperature**  
-40°C to +105°C

**Operating voltage**  
250V AC

**Test voltage**  
1000V AC

**Packing**  
Tray packing

Dimensions		
No. of Contacts	A	B
06	12.54	5.08
08	15.08	7.62
10	17.62	10.16
14	22.70	15.24
16	25.24	17.78
20	30.32	22.86
26	37.94	30.48
34	48.10	40.64
40	55.72	48.26
50	68.42	60.96
60	81.12	73.66
64	86.20	78.74



Bestellcode / Ordercode

**Polzahl**

06 / 08 / 10 / 14 / 16 / 20 /  
26 / 34 / 40 / 50 / 60 / 64

**Mittenpolarisation**

7 - mit Mittenpolarisation\*  
8 - ohne Mittenpolarisation

**Beschichtung\***

5 - vollverzinkt  
2 - Güteklasse III, Au flash\*

**Zugentlastungsbügel**

0 - ohne Zugentlastung\*  
1 - mit Zugentlastung

**No. of contacts**

06 / 08 / 10 / 14 / 16 / 20 /  
26 / 34 / 40 / 50 / 60 / 64

**central polarisation**

7 - with central polarisation\*  
8 - without central polarisation

**Plating\***

5 - Tinned  
2 - Performance class III, Au flash\*

**strain reliefs\***

0 - without strain relief\*  
1 - with strain relief

**AWP** **xx** - **x** **x** **4** **x** **T**

Zugentlastung separat / strain relief separate (xx = No. of contacts)

**AWZ - xx - T**

Bitte „x“ durch die geeignete Option ersetzen  
Please replace „x“ with appropriate option

\* Standard

**Isolierkörpermaterial**

PBT, UL94V-0

**Kontaktmaterial**

Phosphorbronze

**Kontaktfläche**

Ni, Au / Sn

**Kontaktwiderstand**

20mΩ max

**Isolationswiderstand**

1000MΩ min

**Strombelastbarkeit**

1A

**Betriebstemperatur**

-40°C - +105°C

**Betriebsspannung**

125V AC

**Prüfspannung**

1000V AC

**Verpackung**

Blisterverpackung

**Insulator material**

PBT, UL94V-0

**Contact material**

Phosphor bronze

**Plating**

Ni, Au / Sn

**Contact resistance**

20mΩ max

**Insulation resistance**

1000MΩ min

**Current rating**

1A

**Operating temperature**

-40°C to +105°C

**Operating voltage**

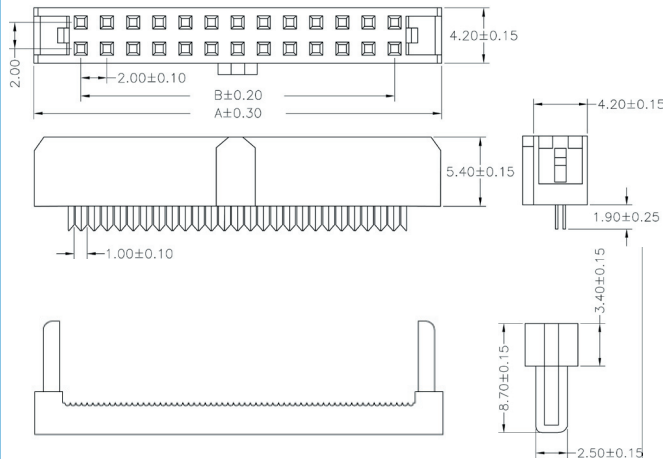
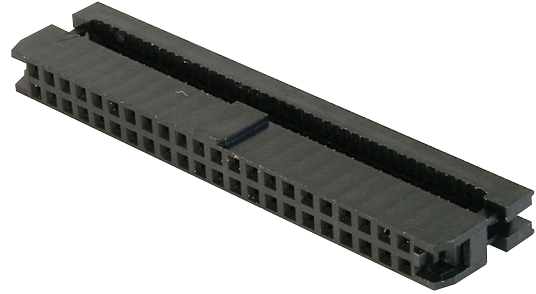
125V AC

**Test voltage**

1000V AC

**Packing**

Tray packing



Dimensions		
No. of Contacts	A	B
10	15,20	8,00
14	19,20	12,00
16	21,20	14,00
20	25,20	18,00
26	31,20	24,00
34	39,20	32,00
40	45,20	38,00
44	49,20	42,00
50	55,20	48,00

**Bestellcode / Ordercode**

**Polzahl**

10 / 14 / 16 / 20 / 26 / 34 / 40 / 44 / 50

**No. of contacts**

10 / 14 / 16 / 20 / 26 / 34 / 40 / 44 / 50

7 - mit Mittelpolarisation

7 - with central polarisation

2 - Güteklasse III, Au flash

2 - Quality class III, Au flash

0 - ohne Zugentlastung

0 - without strain relief

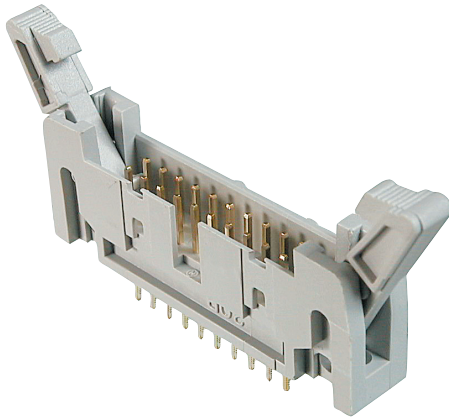
**AWP2 xx - 7 2 4 0**

Bitte „x“ durch die geeignete Option ersetzen  
 Please replace „x“ with appropriate option

Zugentlastung separat / strain relief separate (xx = No. of contacts)

**AWZ2 - xx**

- Cable assemblies
- D-Sub / Hoods Centronics
- Multiflex - DIN41661
- Modular
- USB IEEE1394
- Switches
- Powercords Powerinlets
- DIN41612 Hardmetric
- MiniDIN
- Sockets / Strips Jumper
- Terminal Blocks
- Memory Card
- FFC / FPC



**Isolierkörpermaterial**  
PBT, UL94V-0

**Kontaktmaterial**  
Messing

**Kontaktoberfläche**  
Ni, Au / Sn

**Kontaktwiderstand**  
20mΩ max

**Isolationswiderstand**  
1000MΩ min

**Strombelastbarkeit**  
3A

**Betriebstemperatur**  
-40°C - +105°C

**Betriebsspannung**  
250V AC

**Prüfspannung**  
1000V AC

**Verpackung**  
Blisterverpackung

**Insulator material**  
PBT, UL94V-0

**Contact material**  
Brass

**Plating**  
Ni, Au / Sn

**Contact resistance**  
20mΩ max

**Insulation resistance**  
1000MΩ min

**Current rating**  
3A

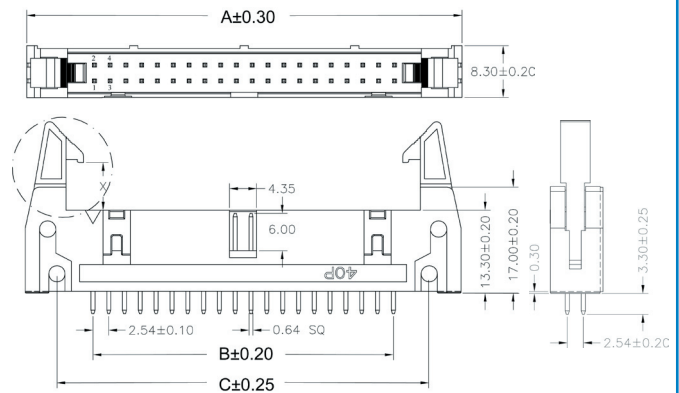
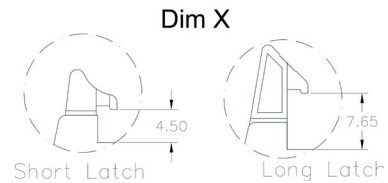
**Operating temperature**  
-40°C to +105°C

**Operating voltage**  
250V AC

**Test voltage**  
1000V AC

**Packing**  
Tray packing

Dimensions			
No. of Contacts	A	B	C
10	31,90	10,16	21,90
14	36,98	15,24	26,98
16	39,52	17,78	29,52
20	44,60	22,86	34,60
26	52,22	30,48	42,22
34	62,38	40,64	52,38
40	70,00	48,26	60,00
50	82,70	60,96	72,70
60	95,40	73,66	85,40
64	100,48	78,74	90,48



Bestellcode / Ordercode

**Polzahl**

10 / 14 / 16 / 20 /  
26 / 34 / 40 / 50 / 60 / 64

**Beschichtung**

5 - vollverzinkt  
2 - Au flash\* (selektiv)

**Verriegelungsclips**

0 - ohne Verriegelungsclips\*  
2 - mit kurzen Verriegelungsclips  
3 - mit langem Verriegelungsclips

**No. of contacts**

10 / 14 / 16 / 20 /  
26 / 34 / 40 / 50 / 60 / 64

**Plating\***

5 - Tinned  
2 - Au flash\* (selective)

**Latches**

0 - without latches\*  
2 - with short latches  
3 - with long latches

**AWH xx G - 0 x x 2 - T**

Verriegelungsclips separat / Latches separate

**AWHCLIP LONG** (lang / long)

**AWHCLIP XSHORT** (kurz / short)

Bitte „x“ durch die geeignete Option ersetzen  
Please replace „x“ with appropriate option

\* Standard

Cable  
assemblies

D-Sub / Hoods  
Centronics

Multiflex -  
DIN41691

Modular

USB  
IEEE1394

Switches

Powercords  
Powerlets

DIN41612  
Hardmetric

MiniDIN

Sockets / Strips  
Jumper

Terminal Blocks

Memory Card

FFC / FPC

**Isolierkörpermaterial**

PBT, UL94V-0

**Kontaktmaterial**

Messing

**Kontaktfläche**

Ni, Au / Sn

**Kontaktwiderstand**

20mΩ max

**Isolationswiderstand**

1000MΩ min

**Strombelastbarkeit**

3A

**Betriebstemperatur**

-40°C - +105°C

**Betriebsspannung**

250V AC

**Prüfspannung**

1000V AC

**Verpackung**

Blisterverpackung

**Insulator material**

PBT, UL94V-0

**Contact material**

Brass

**Plating**

Ni, Au / Sn

**Contact resistance**

20mΩ max

**Insulation resistance**

1000MΩ min

**Current rating**

3A

**Operating temperature**

-40°C to +105°C

**Operating voltage**

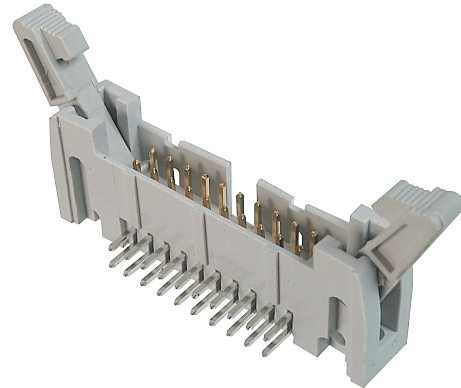
250V AC

**Test voltage**

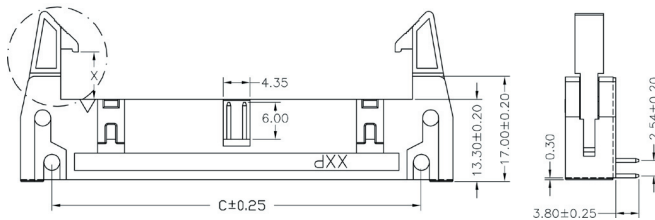
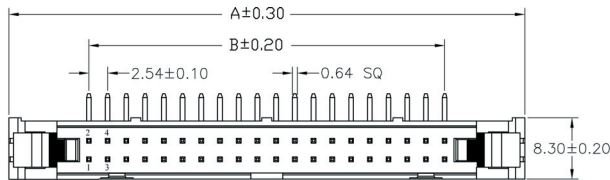
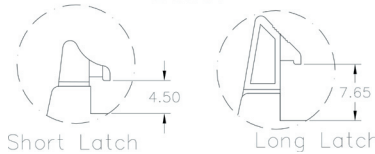
1000V AC

**Packing**

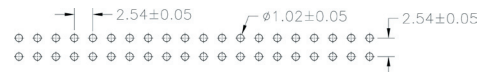
Tray packing



Dim X



Dimensions			
No. of Contacts	A	B	C
10	31,90	10,16	21,90
14	36,98	15,24	26,78
16	39,52	17,78	29,32
20	44,60	22,86	34,40
26	52,22	30,48	42,02
34	62,38	40,64	52,18
40	70,00	48,26	59,80
50	82,70	60,96	72,50
60	95,40	73,66	85,20
64	100,48	78,74	90,28



**Bestellcode / Ordercode**

**Polzahl**

10 / 14 / 16 / 20 /  
26 / 34 / 40 / 50 / 60 / 64

**No. of contacts**

10 / 14 / 16 / 20 /  
26 / 34 / 40 / 50 / 60 / 64

**Beschichtung**

5 - vollverzinkt -  
2 - Au flash\* (selektiv)

**Plating**

5 - Tinned  
2 - Au flash\* (selective)

**Verriegelungsclips**

0 - ohne Verriegelungsclips\*  
2 - mit kurzen Verriegelungsclips  
3 - mit langem Verriegelungsclips

**Latches**

0 - without latches\*  
2 - with short latches  
3 - with long latches

**AWH xx A - 0 x x 2 - T**

Bitte „x“ durch die geeignete Option ersetzen  
 Please replace „x“ with appropriate option

Verriegelungsclips separat / Latches separate

\* Standard

**AWHCLIP LONG** (lang / long)

**AWHCLIP XSHORT** (kurz / short)

Cable assemblies

D-Sub / Hoods Centronics

Multiflex - DIN41651

Modular

USB IEEE1394

Switches

Powercards Powerinlets

DIN41612 Hardmetric

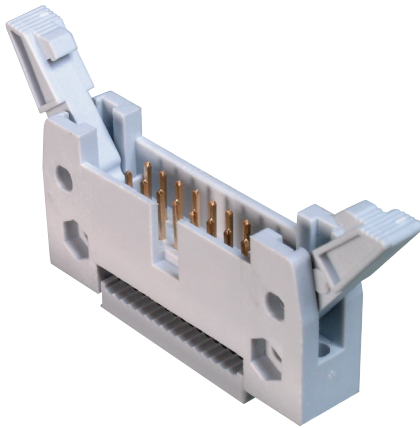
MiniDIN

Sockets / Strips Jumper

Terminal Blocks

Memory Card

FFC / FPC



### Isolierkörpermaterial

PBT, UL94V-0

### Kontaktmaterial

Messing

### Kontaktoberfläche

Ni, Au / Sn

### Kontaktwiderstand

20mΩ max

### Isolationswiderstand

1000MΩ min

### Strombelastbarkeit

1A

### Betriebstemperatur

-40°C - +105°C

### Betriebsspannung

250V AC

### Prüfspannung

1000V AC

### Verpackung

Blisterverpackung

### Insulator material

PBT, UL94V-0

### Contact material

Brass

### Plating

Ni, Au / Sn

### Contact resistance

20mΩ max

### Insulation resistance

1000MΩ min

### Current rating

1A

### Operating temperature

-40°C to +105°C

### Operating voltage

250V AC

### Test voltage

1000V AC

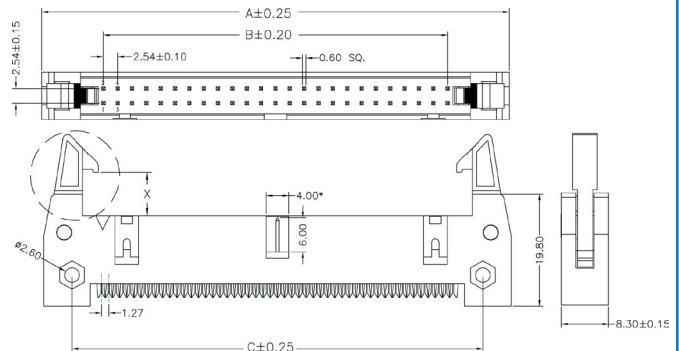
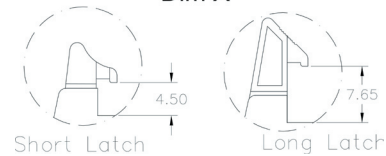
### Packing

Tray packing

### Dimensions

No. of contacts	A	B	C	D
10	31,90	10,16	21,90	15,20
14	36,98	15,24	26,98	20,28
16	39,52	17,78	29,52	22,82
20	44,60	22,86	34,60	27,90
26	52,22	30,48	42,22	35,52
34	62,38	40,64	52,38	45,68
40	70,00	48,26	60,00	53,30
50	82,70	60,96	72,70	66,00
60	95,40	73,66	85,40	78,70
64	100,48	78,74	90,48	83,78

### Dim X



### Bestellcode / Ordercode

### Polzahl

10 / 14 / 16 / 20 / 26 /  
34 / 40 / 50 / 60 / 64

### Ausführung

0 - ohne Flansch\*  
E - mit Flansch

### Verriegelungsklips

0 - ohne Verriegelungsklips\*  
2 - mit kurzen Verriegelungsklips  
3 - mit langen Verriegelungsklips

### No. of contacts

10 / 14 / 16 / 20 / 26 /  
34 / 40 / 50 / 60 / 64

### Version

0 - without mounting ear\*  
E - with mounting ear

### Latches

0 - without latches\*  
2 - with short latches  
3 - with long latches

**AWH** **xx** **G** - **x** - **2** - **x** - **2** - **IDC**

Verriegelungsklipse separat / Latches separate

**AWHCLIP LONG** (lang / long)

**AWHCLIP XSHORT** (kurz / short)

Bitte „x“ durch die geeignete Option ersetzen  
Please replace „x“ with appropriate option

\* Standard

**Isolierkörpermaterial**

PBT, UL94V-0

**Kontaktmaterial**

Messing

**Kontaktfläche**

Ni, AU / Sn

**Kontaktwiderstand**

15mΩ max

**Isolationswiderstand**

1000MΩ min

**Strombelastbarkeit**

1A

**Betriebstemperatur**

-40°C - +105°C

**Betriebsspannung**

250V AC

**Prüfspannung**

1000V AC

**Verpackung**

Blisterverpackung

**Insulator material**

PBT, UL94V-0

**Contact material**

Brass

**Plating**

Ni, AU / Sn

**Contact resistance**

15mΩ max

**Insulation resistance**

1000MΩ min

**Current rating**

1A

**Operating temperature**

-40°C to +105°C

**Operating voltage**

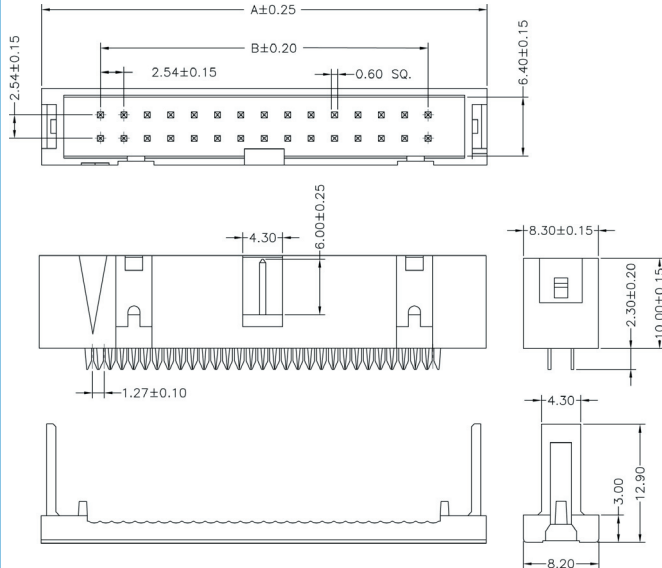
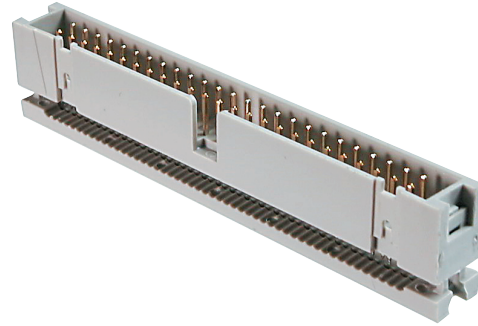
250V AC

**Test voltage**

1000V AC

**Packing**

Tray packing



Dimensions		
No. of contacts	A	B
10	22,95	10,16
14	28,03	15,24
16	30,57	17,78
20	35,65	22,86
26	43,27	30,48
34	53,43	40,64
40	61,05	48,26
50	73,75	60,96
60	86,45	73,66
64	91,53	78,74

Bestellcode / Ordercode

Polzahl

10 / 14 / 16 / 20 /  
26 / 34 / 40 / 50 / 60 / 64

No. of contacts

10 / 14 / 16 / 20 /  
26 / 34 / 40 / 50 / 60 / 64

**AWHC** **xx** - **0111** - **T**

Bitte „x“ durch die geeignete Option ersetzen  
 Please replace „x“ with appropriate option

Zugentlastungsbügel zur Nachrüstung / Strain relief bow for subsequent conversion (xx = No. of contacts)

**AWHC - Z xx**

Cable assemblies

D-Sub / Hoods Centronics

Multiflex - DIN41651

Modular

USB IEEE1394

Switches

Powercards Powerinlets

DIN41612 Hardmetric

MiniDIN

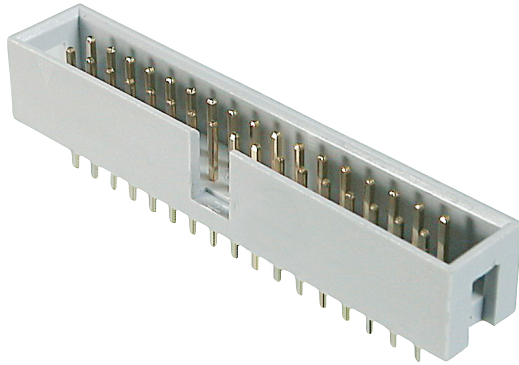
Sockets / Strips Jumper

Terminal Blocks

Memory Card

FFC / FPC





**Isolierkörpermaterial**  
PBT, UL94V-0

**Kontaktmaterial**  
Messing

**Kontaktoberfläche**  
Ni, Au / Sn

**Kontaktwiderstand**  
20mΩ max

**Isolationswiderstand**  
1000MΩ min

**Strombelastbarkeit**  
3A

**Betriebstemperatur**  
-40°C - +105°C

**Betriebsspannung**  
250V AC

**Prüfspannung**  
1000V AC

**Verpackung**  
Blisterverpackung

**Insulator material**  
PBT, UL94V-0

**Contact material**  
Brass

**Plating**  
Ni, Au / Sn

**Contact resistance**  
20mΩ max

**Insulation resistance**  
1000mΩ min

**Current rating**  
3A

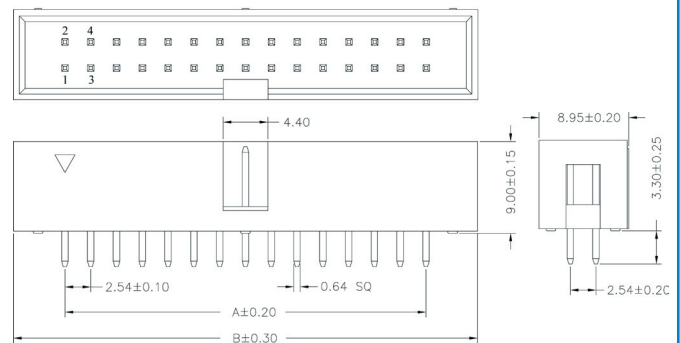
**Operating temperature**  
-40°C to +105°C

**Operating voltage**  
250V AC

**Test voltage**  
1000V AC

**Packing**  
Tray packing

Dimensions		
No. of contacts	A	B
10	10,16	20,32
14	15,24	25,40
16	17,78	27,94
20	22,86	33,02
26	30,48	40,64
34	40,64	50,80
40	48,26	58,42
50	60,96	71,12
60	73,66	83,82
64	78,74	88,90



Bestellcode / Ordercode

Polzahl

10 / 14 / 16 / 20 /  
26 / 34 / 40 / 50 / 60 / 64

No. of contacts

10 / 14 / 16 / 20 /  
26 / 34 / 40 / 50 / 60 / 64

Beschichtung

5 - vollverzinkt  
2 - Au flash\*

Plating

5 - Tinned  
2 - Au flash\*

**AWHW** **xx** **G - 0** **x** **0** **2 - T**

Bitte „x“ durch die geeignete Option ersetzen  
Please replace „x“ with appropriate option

\* Standard

Cable  
assemblies

D-Sub / Hoods  
Centronics

Multiflex -  
DIN41651

Modular

USB  
IEEE1394

Switches

Powercords  
Powerlets

DIN41612  
Hardmetric

MiniDIN

Sockets / Strips  
Jumper

Terminal Blocks

Memory Card

FFC / FPC

**Steckerleisten, 10- bis 64polig, abgewinkelt, Raster 2.54mm x 2.54mm**  
**Header, 10- to 64-contacts, right-angled, pitch 2.54mm x 2.54mm**

**Isolierkörpermaterial**

PBT, UL94V-0

**Kontaktmaterial**

Messing

**Kontaktfläche**

Ni, Au / Sn

**Kontaktwiderstand**

20mΩ max

**Isolationswiderstand**

1000MΩ min

**Strombelastbarkeit**

3A

**Betriebstemperatur**

-40°C - +105°C

**Betriebsspannung**

250V AC

**Prüfspannung**

1000V AC

**Verpackung**

Blisterverpackung

**Insulator material**

PBT, UL94V-0

**Contact material**

Brass

**Plating**

Ni, Au / Sn

**Contact resistance**

20mΩ max

**Insulation resistance**

1000MΩ min

**Current rating**

3A

**Operating temperature**

-40°C to +105°C

**Operating voltage**

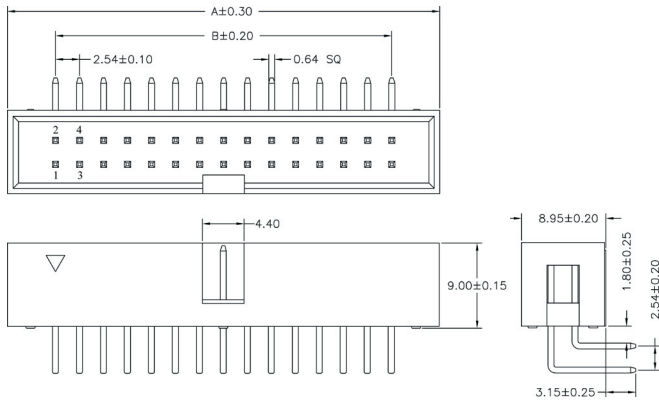
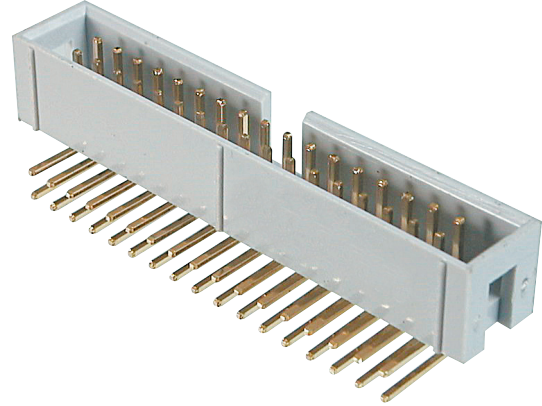
250V AC

**Test voltage**

1000V AC

**Packing**

Tray packing



Dimensions		
No. of contacts	A	B
10	20,32	10,16
14	25,40	15,24
16	27,94	17,78
20	33,02	22,86
26	40,64	30,48
34	50,80	40,64
40	58,42	48,26
50	71,12	60,96
60	83,82	73,66
64	88,90	78,74



**Bestellcode / Ordercode**

**Polzahl**

10 / 14 / 16 / 20 /  
26 / 34 / 40 / 50 / 60 / 64

**No. of contacts**

10 / 14 / 16 / 20 /  
26 / 34 / 40 / 50 / 60 / 64

**Beschichtung**

5 - vollverzinkt  
2 - Au flash\* (selektiv)

**Plating**

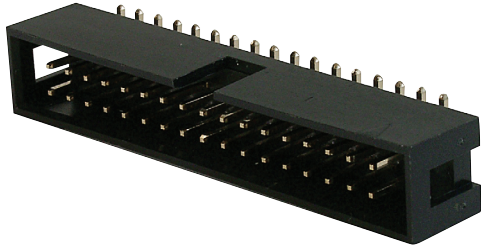
5 - Tinned  
2 - Au flash\* (selective)

**AWHW xx A - 0 x 0 2 - T**

Bitte „x“ durch die geeignete Option ersetzen  
 Please replace „x“ with appropriate option

\* Standard

- Cable assemblies
- D-Sub / Hoods Centronics
- Multiflex - DIN41651
- Modular
- USB IEEE1394
- Switches
- Powercards Powerinlets
- DIN41612 Hardmetric
- MiniDIN
- Sockets / Strips Jumper
- Terminal Blocks
- Memory Card
- FFC / FPC



**Isolierkörpermaterial**

PA6T, UL94V-0

**Kontaktmaterial**

Messing

**Kontaktoberfläche**

Ni, Au / Sn

**Kontaktwiderstand**

20mΩ max

**Isolationswiderstand**

1000MΩ min

**Strombelastbarkeit**

3A

**Betriebstemperatur**

-40°C - +105°C

**Betriebsspannung**

250V AC

**Prüfspannung**

1000V AC

**Verpackung**

Blisterverpackung  
andere auf Anfrage

**Insulator material**

PA6T, UL94V-0

**Contact material**

Brass

**Plating**

Ni, Au / Sn

**Contact resistance**

20mΩ max

**Insulation resistance**

1000MΩ min

**Current rating**

3A

**Operating temperature**

-40°C to +105°C

**Operating voltage**

250V AC

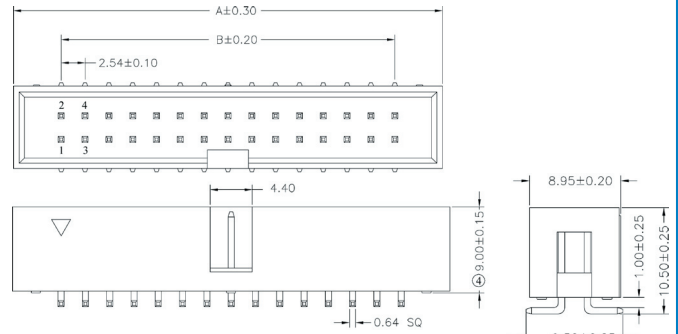
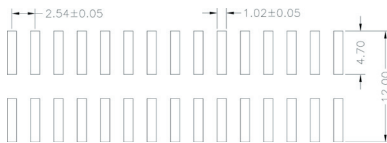
**Test voltage**

1000V AC

**Packing**

Tray packing  
other packings on request

Dimensions		
No. of contacts	A	B
10	20,32	10,16
14	25,40	15,24
16	27,94	17,78
20	33,02	22,86
26	40,64	30,48
34	50,80	40,64
40	58,42	48,26



Bestellcode / Ordercode

Polzahl

10 / 14 / 16 / 20 / 26 / 34 / 40

No. of contacts

10 / 14 / 16 / 20 / 26 / 34 / 40

**AWHW xx G - SMD**

Bitte „x“ durch die geeignete Option ersetzen  
Please replace „x“ with appropriate option

**Isolierkörpermaterial**

PA6T, UL94V-0

**Kontaktmaterial**

Messing

**Kontaktfläche**

Ni, Au

**Kontaktwiderstand**

20mΩ max

**Isolationswiderstand**

1000MΩ min

**Strombelastbarkeit**

1.5A

**Betriebstemperatur**

-40°C - +105°C

**Betriebsspannung**

125V AC

**Prüfspannung**

1000V AC

**Verpackung**

Blisterverpackung

**Insulator material**

PA6T, UL94V-0

**Contact material**

Brass

**Plating**

Ni, Au

**Contact resistance**

20mΩ max

**Insulation resistance**

1000MΩ min

**Current rating**

1.5A

**Operating temperature**

-40°C to +105°C

**Operating voltage**

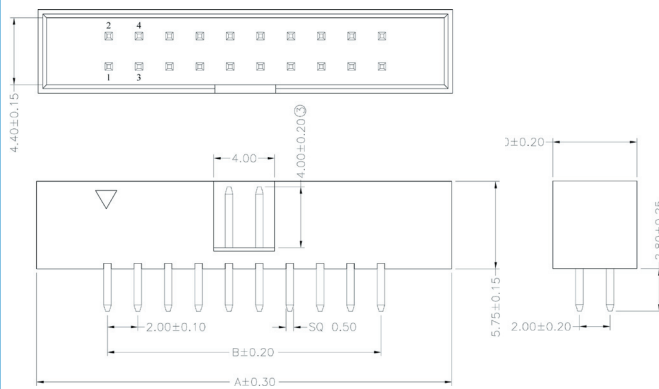
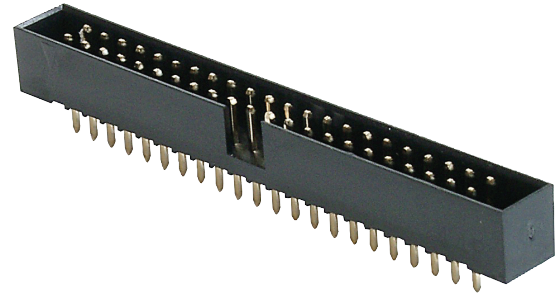
125V AC

**Test voltage**

1000V AC

**Packing**

Tray packing



Dimensions		
No. of contacts	A	B
10	17,00	8,00
14	21,00	12,00
16	23,00	14,00
20	27,00	18,00
26	33,00	24,00
34	41,00	32,00
40	47,00	38,00
44	51,00	42,00
50	57,00	48,00



**Bestellcode / Ordercode**

**Polzahl**

10 / 14 / 16 / 20 / 26 /  
34 / 40 / 44 / 50

**No. of contacts**

10 / 14 / 16 / 20 / 26 /  
34 / 40 / 44 / 50

2 - Au flash

2 - Au flash

**AWHW2 xx G - 0 2 0 2**

Bitte „x“ durch die geeignete Option ersetzen  
 Please replace „x“ with appropriate option

Cable assemblies

D-Sub / Hoods Centronics

Multiflex - DIN41661

Modular

USB IEEE1394

Switches

Powercards Powerline

DIN41612 Hardmetric

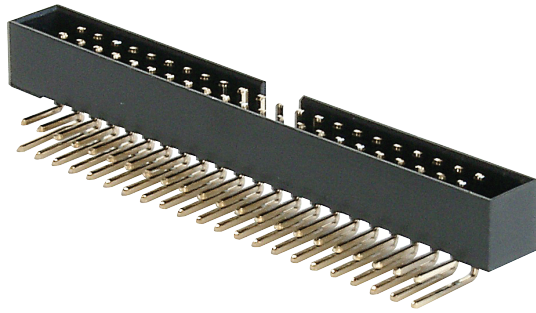
MiniDIN

Sockets / Strips Jumper

Terminal Blocks

Memory Card

FFC / FPC



**Isolierkörpermaterial**  
PA6T, UL94V-0

**Kontaktmaterial**  
Messing

**Kontaktoberfläche**  
Ni, Au

**Kontaktwiderstand**  
20mΩ max

**Isolationswiderstand**  
1000MΩ min

**Strombelastbarkeit**  
1.5A

**Betriebstemperatur**  
-40°C - +105°C

**Betriebsspannung**  
125V AC

**Prüfspannung**  
1000V AC

**Verpackung**  
Blisterverpackung

**Insulator material**  
PA6T, UL94V-0

**Contact material**  
Brass

**Plating**  
Ni, Au

**Contact resistance**  
20mΩ max

**Insulation resistance**  
1000MΩ min

**Current rating**  
1.5A

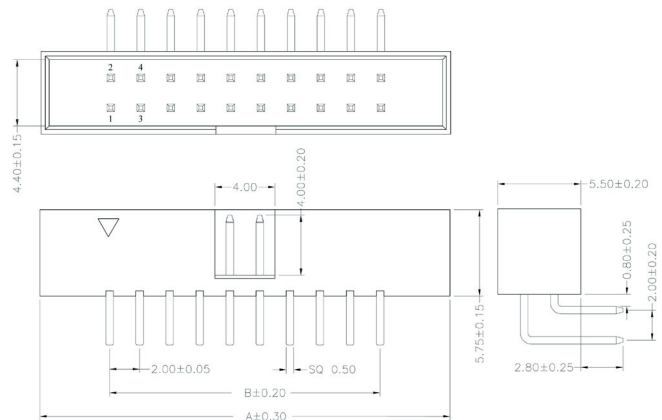
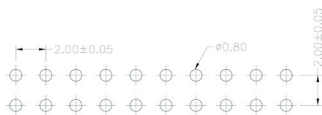
**Operating temperature**  
-40°C to +105°C

**Operating voltage**  
125V AC

**Test voltage**  
1000V AC

**Packing**  
Tray packing

Dimensions		
No. of contacts	A	B
10	17,00	8,00
14	21,00	12,00
16	23,00	14,00
20	27,00	18,00
26	33,00	24,00
34	41,00	32,00
40	47,00	38,00
44	51,00	42,00
50	57,00	48,00



Bestellcode / Ordercode

Polzahl

No. of contacts

10 / 14 / 16 / 20 / 26 /  
34 / 40 / 44 / 50

10 / 14 / 16 / 20 / 26 /  
34 / 40 / 44 / 50

2 - Au flash

2 - Au flash

**AWHW2 xx A - 0 2 0 2**

Bitte „x“ durch die geeignete Option ersetzen  
Please replace „x“ with appropriate option

Cable  
assemblies

D-Sub / Hoods  
Centronics

Multiflex -  
DIN41691

Modular

USB  
IEEE1394

Switches

Powercords  
Powerlets

DIN41612  
Hardmetric

MiniDIN

Sockets / Strips  
Jumper

Terminal Blocks

Memory Card

FFC / FPC

**Isolierkörpermaterial**

PA6T, UL94V-0

**Kontaktmaterial**

Messing

**Kontaktoberfläche**

Ni, Au

**Kontaktwiderstand**

20mΩ max

**Isolationswiderstand**

1000MΩ min

**Strombelastbarkeit**

1.5A

**Betriebstemperatur**

-40°C - +105°C

**Betriebsspannung**

125V AC

**Prüfspannung**

1000V AC

**Verpackung**

Blisterverpackung

**Insulator material**

PA6T, UL94V-0

**Contact material**

Brass

**Plating**

Ni, Au

**Contact resistance**

20mΩ max

**Insulation resistance**

1000mΩ min

**Current rating**

1.5A

**Operating temperature**

-40°C to +105°C

**Operating voltage**

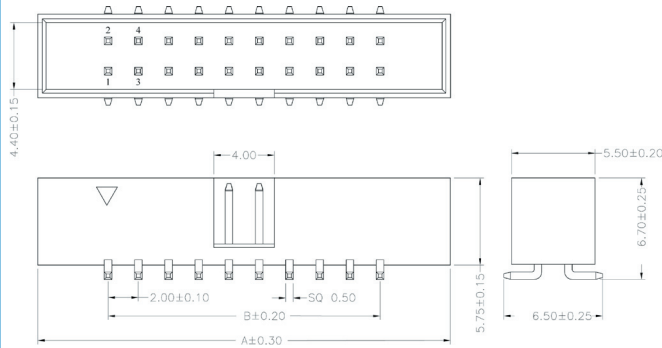
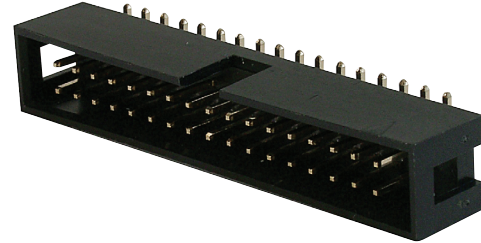
125V AC

**Test voltage**

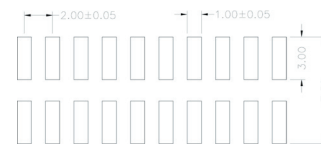
1000V AC

**Packing**

Tray packing



Dimensions		
No. of contacts	A	B
10	17,00	8,00
14	21,00	12,00
16	23,00	14,00
20	27,00	18,00
26	33,00	24,00
34	41,00	32,00
40	47,00	38,00
44	51,00	42,00
50	57,00	48,00



**Bestellcode / Ordercode**

**Polzahl**

10 / 14 / 16 / 20 /  
26 / 34 / 40 / 44 / 50

**No. of contacts**

10 / 14 / 16 / 20 /  
26 / 34 / 40 / 44 / 50

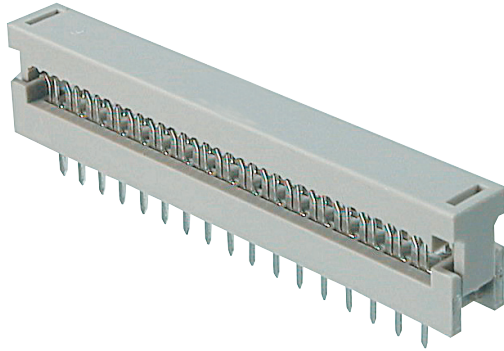
200 - Raster 2.00mm

200 - Raster 2.00mm

**AWHW xx G - SMD - 200**

Bitte „x“ durch die geeignete Option ersetzen  
 Please replace „x“ with appropriate option

- Cable assemblies
- D-Sub / Hoods Centronics
- Multiflex - DIN41661
- Modular
- USB IEEE1394
- Switches
- Powercards Powerinlets
- DIN41612 Hardmetric
- MiniDIN
- Sockets / Strips Jumper
- Terminal Blocks
- Memory Card
- FFC / FPC



**Isolierkörpermaterial**  
PBT, UL94V-0

**Kontaktmaterial**  
Messing

**Kontaktoberfläche**  
Ni, Sn

**Kontaktwiderstand**  
20mΩ max

**Isolationswiderstand**  
1000MΩ min

**Strombelastbarkeit**  
3A

**Betriebstemperatur**  
-40°C - +105°C

**Betriebsspannung**  
250V AC

**Prüfspannung**  
500V AC

**Verpackung**  
Blisterverpackung

**Insulator material**  
PBT, UL94V-0

**Contact material**  
Brass

**Plating**  
Ni, Sn

**Contact resistance**  
20mΩ max

**Insulation resistance**  
1000MΩ min

**Current rating**  
3A

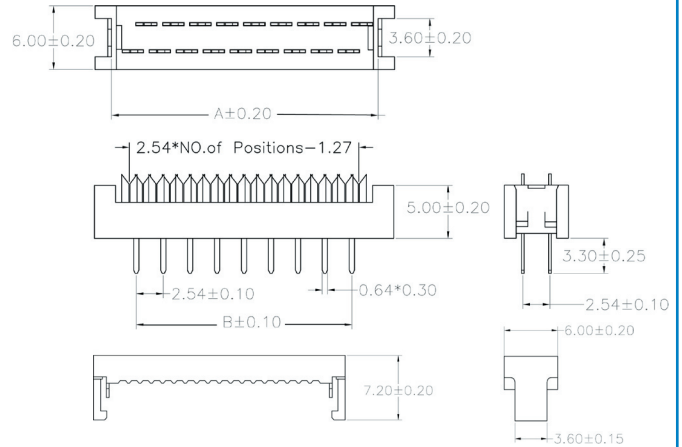
**Operating temperature**  
-40°C to +105°C

**Operating voltage**  
250V AC

**Test voltage**  
500V AC

**Packing**  
Tray packing

Dimensions			
No. of contacts	A	B	C
10	17,48	10,16	18,17
14	22,56	15,24	23,25
16	25,10	17,78	25,79
20	30,18	22,87	30,87
26	37,80	30,48	38,49
34	47,96	40,64	48,65
40	55,58	48,26	56,27
50	68,28	60,96	68,97
60	80,98	73,66	81,67
64	86,06	78,74	86,75



Bestellcode / Ordercode

Polzahl

No. of contacts

10 / 14 / 16 / 20 /  
26 / 34 / 40 / 50 / 60 / 64

10 / 14 / 16 / 20 /  
26 / 34 / 40 / 50 / 60 / 64

AWLP xx / 3,2 T

Bitte „x“ durch die geeignete Option ersetzen  
Please replace „x“ with appropriate option

**Isolierkörpermaterial**

PBT, UL94V-0

**Kontaktmaterial**

Phosphorbronze

**Kontaktfläche**

Ni, Sn

**Kontaktwiderstand**

20mΩ max

**Isolationswiderstand**

1000MΩ min

**Strombelastbarkeit**

1A

**Betriebstemperatur**

-40°C - +105°C

**Betriebsspannung**

125V AC

**Prüfspannung**

500V AC

**Verpackung**

Blisterverpackung

**Insulator material**

PBT, UL94V-0

**Contact material**

Phosphor bronze

**Plating**

Ni, Sn

**Contact resistance**

20mΩ max

**Insulation resistance**

1000mΩ min

**Current rating**

1A

**Operating temperature**

-40°C to +105°C

**Operating voltage**

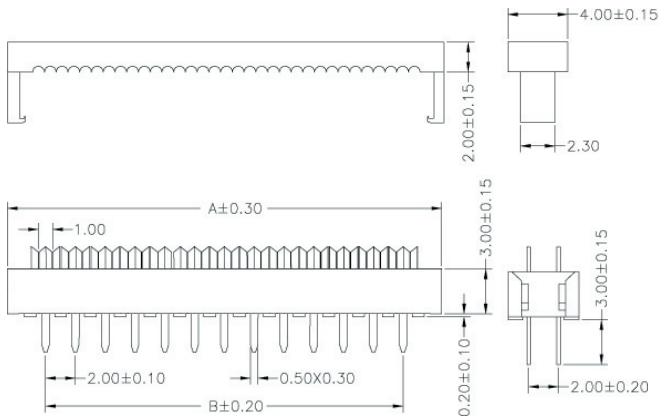
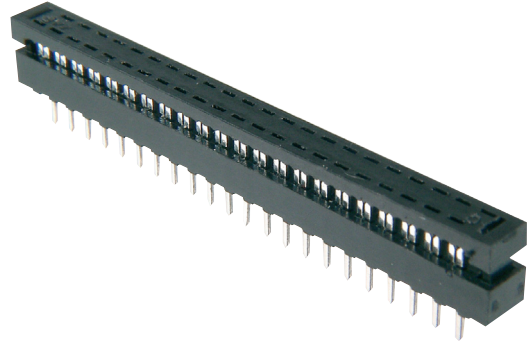
125V AC

**Test voltage**

500V AC

**Packing**

Tray packing



Dimensions		
No. of contacts	A	B
10	14,30	8,00
14	18,30	12,00
16	20,30	14,00
20	24,30	18,00
26	30,30	24,00
34	38,30	32,00
40	44,30	38,00
50	54,30	48,00
60	64,30	58,00
64	68,30	62,00



Bestellcode / Ordercode

Polzahl

10 / 16 / 20 / 26 / 34 / 40 /  
50 / 60 / 64

No. of contacts

10 / 16 / 20 / 26 / 34 / 40 /  
50 / 60 / 64

**AWLP2 - xx**

Bitte „x“ durch die geeignete Option ersetzen  
 Please replace „x“ with appropriate option

Cable assemblies

D-Sub / Hoods Centronics

Multiflex - DIN41651

Modular

USB IEEE1394

Switches

Powercords Powerline

DIN41612 Hardmetric

MiniDIN

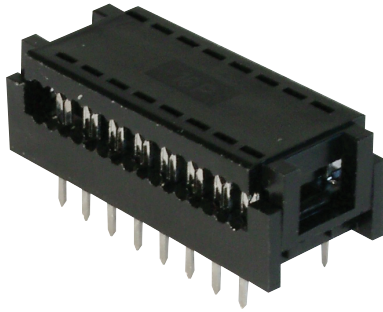
Sockets / Strips Jumper

Terminal Blocks

Memory Card

FFC / FPC





**Isolierkörpermaterial**

PBT, UL94V-0

**Kontaktmaterial**

Messing

**Kontaktoberfläche**

Ni, Sn

**Kontaktwiderstand**

20mΩ max

**Isolationswiderstand**

1000MΩ min

**Strombelastbarkeit**

1A

**Betriebstemperatur**

-40°C - +105°C

**Betriebsspannung**

250V AC

**Prüfspannung**

1000V AC

**Verpackung**

Blisterverpackung

**Insulator material**

PBT, UL94V-0

**Contact material**

Brass

**Plating**

Ni, Sn

**Contact resistance**

20mΩ max

**Insulation resistance**

1000mΩ min

**Current rating**

1A

**Operating temperature**

-40°C to +105°C

**Operating voltage**

250V AC

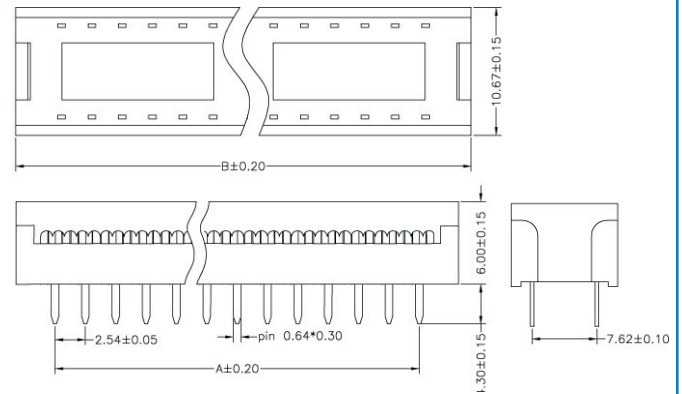
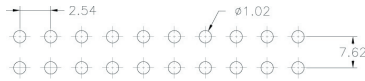
**Test voltage**

1000V AC

**Packing**

Tray packing

Dimensions		
No. of contacts	A	B
08	7.62	15.42
10	10.16	17.96
14	15.24	23.04
16	17.78	25.58
20	22.86	30.66



Bestellcode / Ordercode

Polzahl

08 / 10 / 14 / 16 / 20

No. of contacts

08 / 10 / 14 / 16 / 20

**ADIP xx Z - LC**

Bitte „x“ durch die geeignete Option ersetzen  
Please replace „x“ with appropriate option

**Flachbandkabel AWG 28**, Grau oder Farbig, Raster 1.27mm  
**Flat cable AWG 28**, grey or coloured, pitch 1.27mm

**Betriebsspannung**

300V

**Durchschlagsspannung**

2000V

**Strombelastbarkeit**

1A

**Kapazität**

45pF / m

**Leiterwiderstand**

< 215Ω / km

**Impedanz**

104Ω

**Übersprechen unsymmetrisch**

60 dB

**Übersprechen symmetrisch**

50 dB

**Betriebstemperatur**

-30°C - +105°C

**Farbe**

Grau (Rote Randmarkierung)

**Farbfolge**

braun, rot, orange, gelb, grün,  
blau, violett, grau, weiss,  
schwarz

**Operating voltage**

300V

**Test voltage**

2000V

**Current rating**

1A

**Capacity**

45pF / m

**Conductor resistance**

< 215Ω / km

**Impedance**

104Ω

**Cross-talk asymmetric**

60 dB

**Cross-talk symmetric**

50 dB

**Operating temperature**

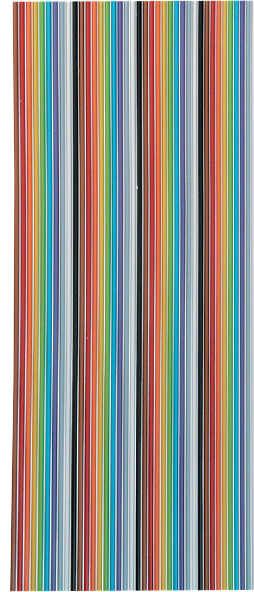
-30°C - +105°C

**Colour**

Grey (red coded)

**Colour sequence**

brown, red, orange, yellow,  
green, blue, violet, grey, white,  
black



UL-STYLE : 2651

UL-STYLE : 2651

**Made in Germany**

Bestellcode / [Ordercode](#)

**Polzahl**

10 / 14 / 16 / 20 / 25 / 26 /  
34 / 37\* / 40 / 50 / 60\* / 64

**No. of contacts**

10 / 14 / 16 / 20 / 25 / 26 /  
34 / 37\* / 40 / 50 / 60\* / 64

**Farbe**

G - Grau ( 30.5 m)  
G50 - Grau ( 50.0 m)  
G100- Grau (100.0 m)  
F - Farbcodiert ( 30.5 m)

**Colour**

G - Grey ( 30.5 m)  
G50 - Grey ( 50.0 m)  
G100- Grey (100.0 m)  
F - Colour coded ( 30.5 m)

**AWG 28 - xx / x**

Bitte „x“ durch die geeignete Option ersetzen  
 Please replace „x“ with appropriate option

\* nicht bei farbkodierten Leitungen verfügbar  
 \* not available in color cables

Cable assemblies

D-Sub / Hoods Centronics

Multiflex - DIN41651

Modular

USB IEEE1394

Switches

Powercards Powerinlets

DIN41612 Hardmetric

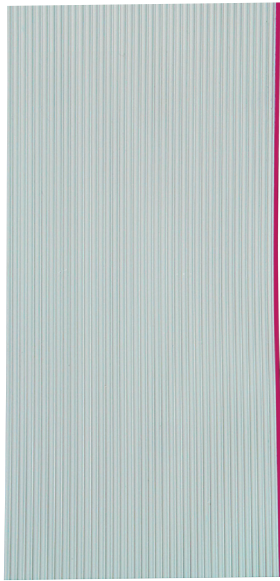
MiniDIN

Sockets / Strips Jumper

Terminal Blocks

Memory Card

FFC / FPC



<b>Betriebsspannung</b> 300V	<b>Operating voltage</b> 300V
<b>Durchschlagsspannung</b> 2000V	<b>Test voltage</b> 2000V
<b>Strombelastbarkeit</b> 1A	<b>Current rating</b> 1A
<b>Kapazität</b> 45pF / m	<b>Capacity</b> 45pF / m
<b>Leiterwiderstand</b> < 213Ω / km	<b>Conductor resistance</b> < 213Ω / km
<b>Impedanz</b> 104Ω	<b>Impedance</b> 104Ω
<b>Übersprechen unsymmetrisch</b> 60 dB	<b>Cross-talk asymmetric</b> 60 dB
<b>Übersprechen symmetrisch</b> 50 dB	<b>Cross-talk symmetric</b> 50 dB
<b>Betriebstemperatur</b> -30°C - +105°C	<b>Operating temperature</b> -30°C - +105°C
<b>Farbe</b> Grau (Rote Randmarkierung)	<b>Colour</b> Grey (red coded)
<b>UL-STYLE : 2651</b>	<b>UL-STYLE : 2651</b>

Bestellcode / Ordercode

**Polzahl**  
10 / 14 / 16 / 20 / 25 /  
26 / 34 / 40 / 50 / 64

**No. of contacts**  
10 / 14 / 16 / 20 / 25 /  
26 / 34 / 40 / 50 / 64

**AK** **AWG** **xx**

Bitte „x“ durch die geeignete Option ersetzen  
Please replace „x“ with appropriate option

**Standard: 30.5m Rolle**  
**standard: 30.5m Reel**

Cable  
assemblies

D-Sub / Hoods  
Centronics

Multiflex -  
DIN41651

Modular

USB  
IEEE1394

Switches

Powercords  
Powerlets

DIN41612  
Hardmetric

MiniDIN

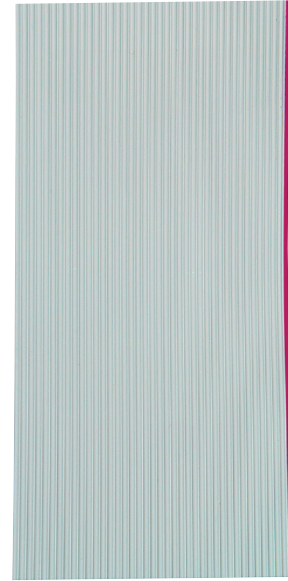
Sockets / Strips  
Jumper

Terminal Blocks

Memory Card

FPC / FPC

<b>Betriebsspannung</b> 300V	<b>Operating voltage</b> 300V
<b>Durchschlagsspannung</b> 2000V	<b>Test voltage</b> 2000V
<b>Strombelastbarkeit</b> 1A	<b>Current rating</b> 1A
<b>Kapazität</b> 45pF / m	<b>Capacity</b> 45pF / m
<b>Leiterwiderstand</b> < 213Ω / km	<b>Conductor resistance</b> < 213Ω / km
<b>Impedanz</b> 104Ω	<b>Impedance</b> 104Ω
<b>Übersprechen unsymmetrisch</b> 60 dB	<b>Cross-talk asymetric</b> 60 dB
<b>Übersprechen symmetrisch</b> 50 dB	<b>Cross-talk symetric</b> 50 dB
<b>Betriebstemperatur</b> -30°C - +105°C	<b>Operating temperature</b> -30°C - +105°C
<b>Farbe</b> Grau (Rote Randmarkierung)	<b>Colour</b> Grey (red coded)
<b>UL-STYLE : 2651</b>	<b>UL-STYLE : 2651</b>



Bestellcode / [Ordercode](#) **Polzahl** **No. of contacts**  
14 / 20 / 26 / 34 / 40 / 50 14 / 20 / 26 / 34 / 40 / 50

**AWG 28 - xx / G - 1,0**

Bitte „x“ durch die geeignete Option ersetzen  
 Please replace „x“ with appropriate option

- Cable assemblies
- D-Sub / Hoods  
Centronics
- Multiflex -  
DIN41651
- Modular
- USB  
IEEE1394
- Switches
- Powercards  
Powerinlets
- DIN41612  
Hardmetric
- MiniDIN
- Sockets / Strips  
Jumper
- Terminal Blocks
- Memory Card
- FFC / FPC

Neben Standardkabeln fertigen wir Kabelkonfektionen speziell nach Kundenwunsch.

Im Bereich Flachband-kabel bieten wir Ihnen Konfektionen mit beliebigen Polzahlen und Längen mit entsprechenden Steckverbindern an.

Ein äußerst flexibles und kostengünstiges System von automatischer und manueller Fertigung bietet Ihnen

- wettbewerbsfähige Preise
- hohe Qualität mit 100% elektrischer Prüfung und Zertifizierung auf Wunsch
- Bedruckung von Kabel und Steckern

**Senden Sie uns Ihre Anfrage.**

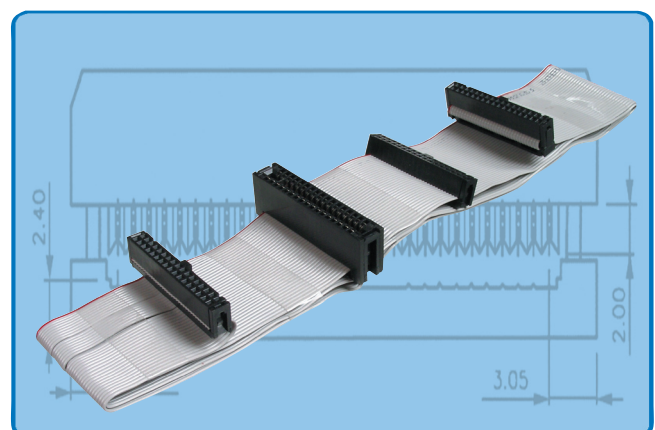
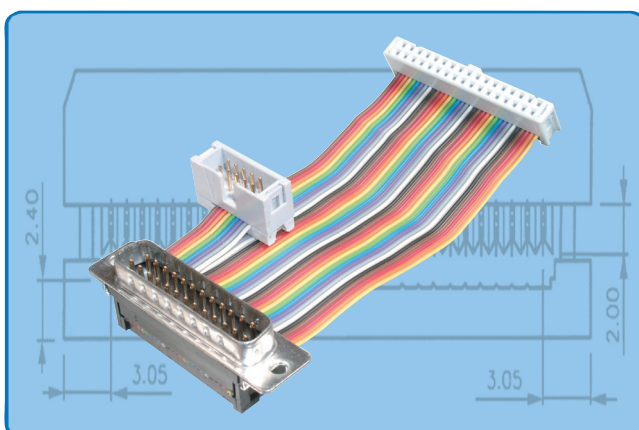
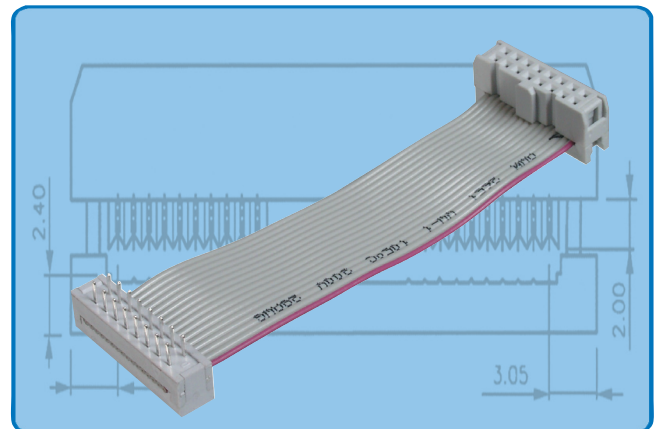
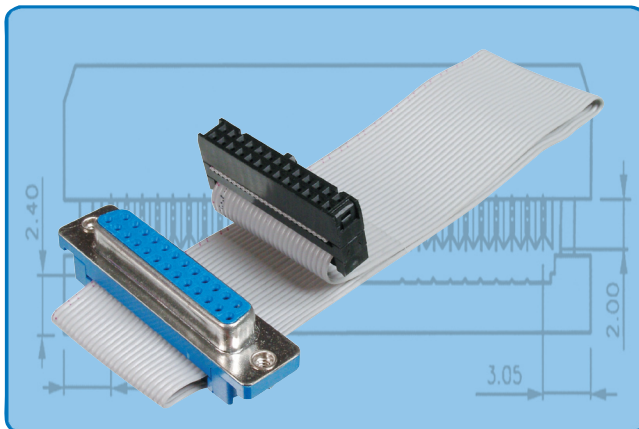
Apart from standard cables, special cables can be assembled upon request.

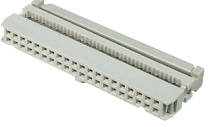
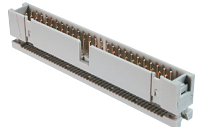
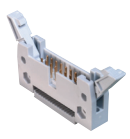
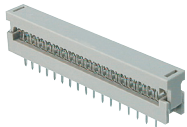


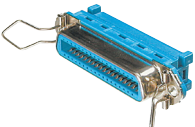
For flatcables we offer assemblies in any length with any number of conductors and with all kinds of connectors.

An extremely flexible and cost-effective system of automatic and manual production offers you

- competitive pricing
- high quality with 100% electrical testing and certification on request
- printing on cables and connectors

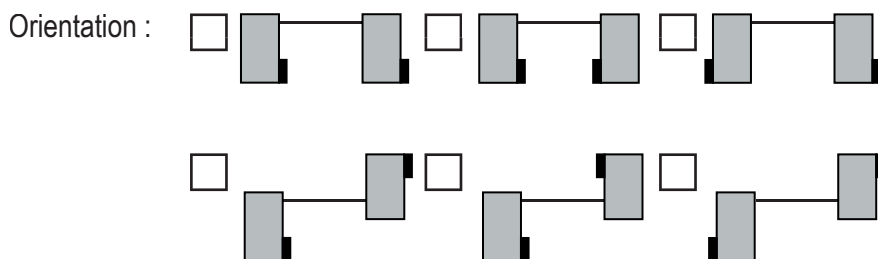
**Please send your enquiry**



Connector		Side	Male	Female	Number of Contacts	Strain Relief
	Female Header	1 <sup>st</sup>	X	X		<input type="checkbox"/>
		2 <sup>nd</sup>	X	X		<input type="checkbox"/>
	Header low profile	1 <sup>st</sup>	X	X		X
		2 <sup>nd</sup>	X	X		X
	Header	1 <sup>st</sup>	X	X		X
		2 <sup>nd</sup>	X	X		X
	PCB Transition	1 <sup>st</sup>	X	X		X
		2 <sup>nd</sup>	X	X		X
	DIP Connector	1 <sup>st</sup>	X	X		X
		2 <sup>nd</sup>	X	X		X
	D-Sub	1 <sup>st</sup>	<input type="checkbox"/>	<input type="checkbox"/>		<input type="checkbox"/>
		2 <sup>nd</sup>	<input type="checkbox"/>	<input type="checkbox"/>		<input type="checkbox"/>
	Centronics	1 <sup>st</sup>	<input type="checkbox"/>	<input type="checkbox"/>		<input type="checkbox"/>
		2 <sup>nd</sup>	<input type="checkbox"/>	<input type="checkbox"/>		<input type="checkbox"/>

Cable :      Color :       grey       Color Coded  
 Pitch :       1mm       1.27mm      total length : \_\_\_\_\_

Connection :     1:1       other : \_\_\_\_\_



special winding / packing :     No       yes, see detailed description attached

other special properties :     No       yes, see detailed description attached

- Cable assemblies
- D-Sub / Hoods Centronics
- Multiflex - DIN41651
- Modular
- USB IEEE1394
- Switches
- Powercords Powerinlets
- DIN41612 Hardmetric
- MiniDIN
- Sockets / Strips Jumper
- Terminal Blocks
- Memory Card
- FFC / FPC