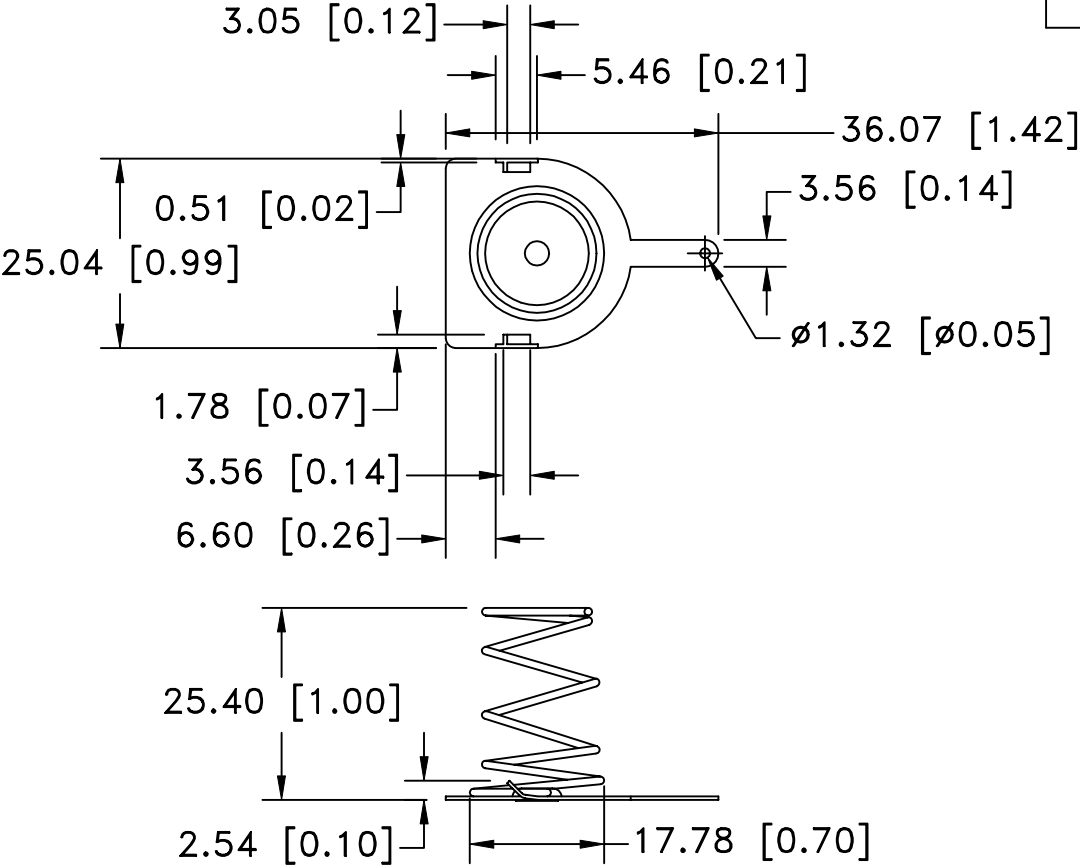



Date	SYM	REVISION RECORD	AUTH	DR.	CK.



NOTES:

1. MATERIAL:
 CONTACT PLATE: 0.45mm (0.018") THICK
 RIVETS: BRASS, NICKLE PLTD.
 SPRING: 1.02mm (0.04") THICK SPRING STEEL, NICKLE PLTD.

Tolerance (Except as noted)	 Memory Protection Devices, Inc 200 Broad Hollow Road, Farmingdale, New York 11735		
decimal ±.5 (.020)		Scale	Drawn By B.S. Approved By T.B.
Fractional ± .8 (.030)	Title NEGATIVE CONTACT FOR "D" CELL		
Angular ± 3°	Date 04/13/02	Drawing Number BK-876	