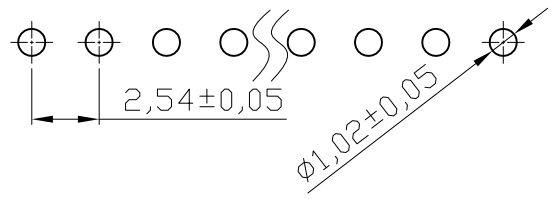


Recommended PCB Layout(Top Side)



NOTES:

MATERIAL

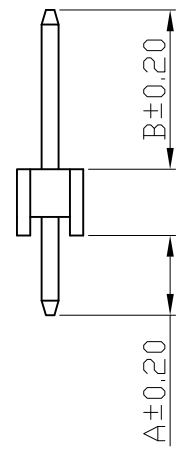
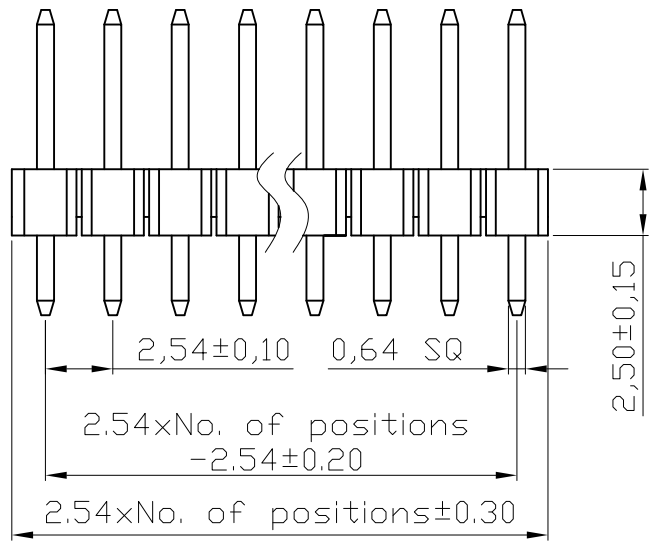
- 1.Insulator Material:PBT+30%GF(UL94V-0)
- 2.Contact Material : Brass
- 3.Contact Plating : Au or Sn Over Ni

ELECTRICAL

- 1.Current Rating : 3.0AMP
- 2.Withstand Voltage : 500V AC/DC
- 3.Contact Resistance : 20mΩ max
- 4.Insulation Resistance: 1000MΩ min


ENVIRONMENTAL

- 1.Operation Temperature: -40°C to +105°C
- 2.Packing : PE Bag



Y	Dimension	
	A	B
D	3.0	5.7
A	3.8	6.1
B	3.0	6.1
C1	2.3	8.8
C2	5	6.1
E	6	12.6
F	3	3.7

RoHS compliant

Scale	1:1						Date	Name	Customer-No.
TOLERANCE						Drawn	03.02.2009	Dean	ASSMANN WSW-No. AW140-EG-GXXY AW140-EG-ZXXY
X.X	±0.40					Approved	03.02.2009	Hellwig	
X.XX	±0.25								
X.XXX	±0.15								
DIM	TOL								Drawing-No.
Angle	±3°								ASS 3350 CO
X.X°	±X°	①	Drawn	03.02.2009	Dean			rev01	
Angle	TOL	Id.	Modification	Date	Name			Replace	Sheet