

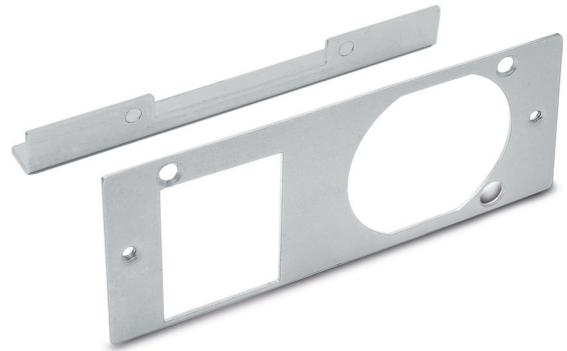
X1-184

Montage-Set zum Einbau in
Standard-1HE-Gehäuse (100 x 190 mm)

*Mounting kit for installation in
standard 1U chassis (100 x 190 mm)*

- Frontplatte und Haltewinkel hinten
- Inkl. 4x 6/32"x4-Schrauben und 2x M3x6 SK-Schrauben
- VE: 1 Stück

- Front plate and backside bracket
- Incl. 4x 6/32"x4 screws and 2x M3x6 SK screws
- PU: 1 piece



Zeichnung X1-184 Frontplatte / Drawing X1-184 front plate

