

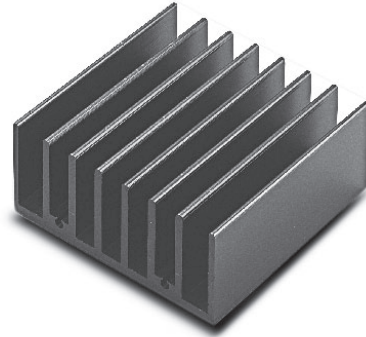
# PSZ-1003

## Heatsink-Set

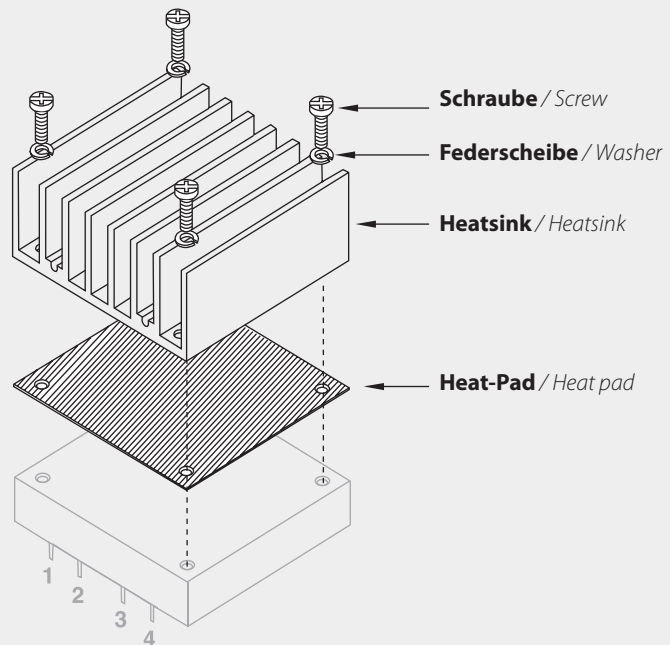
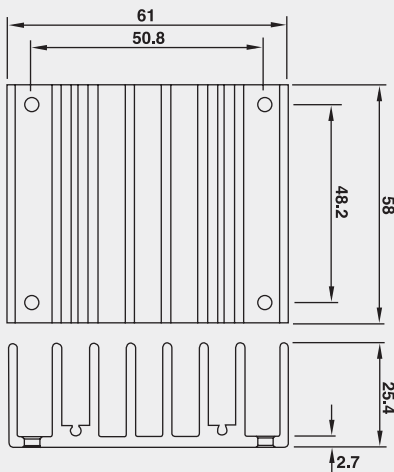
*Heatsink set*

- 1x Heatsink
- 1x Thermal-Pad
- 4x Schraube / Federscheibe

- 1x Heatsink
- 1x Thermal pad
- 4x Screw / Washer



### Gehäuse-Zeichnung PSZ-1003 / Drawing PSZ-1003



#### Rca

- 3.00°C/W (typ.), At natural convection
- 1.44°C/W (typ.), At 100LFM
- 1.17°C/W (typ.), At 200LFM
- 1.04°C/W (typ.), At 300LFM
- 0.95°C/W (typ.), At 400LFM