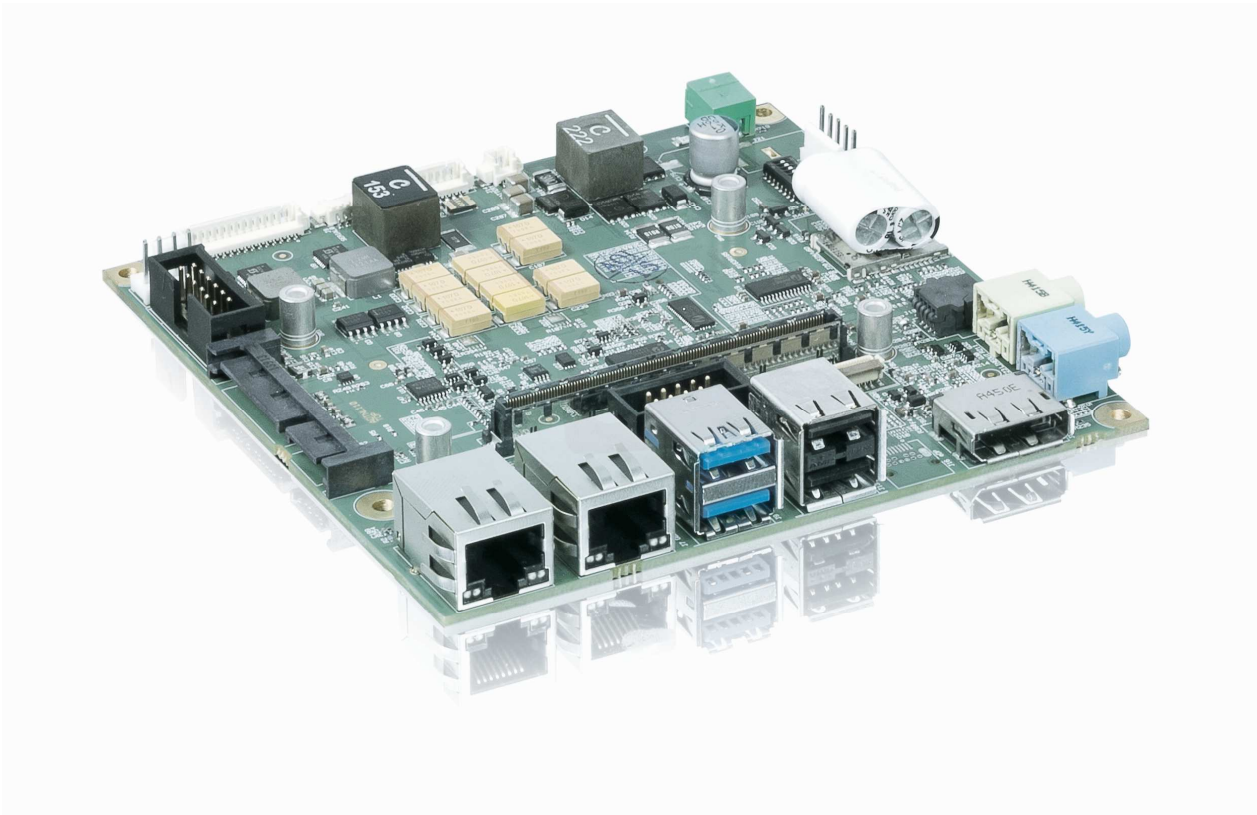


» Short Description «



COM Express® Reference Carrier-i T10 TNiX

Short Description

» Table of Contents «

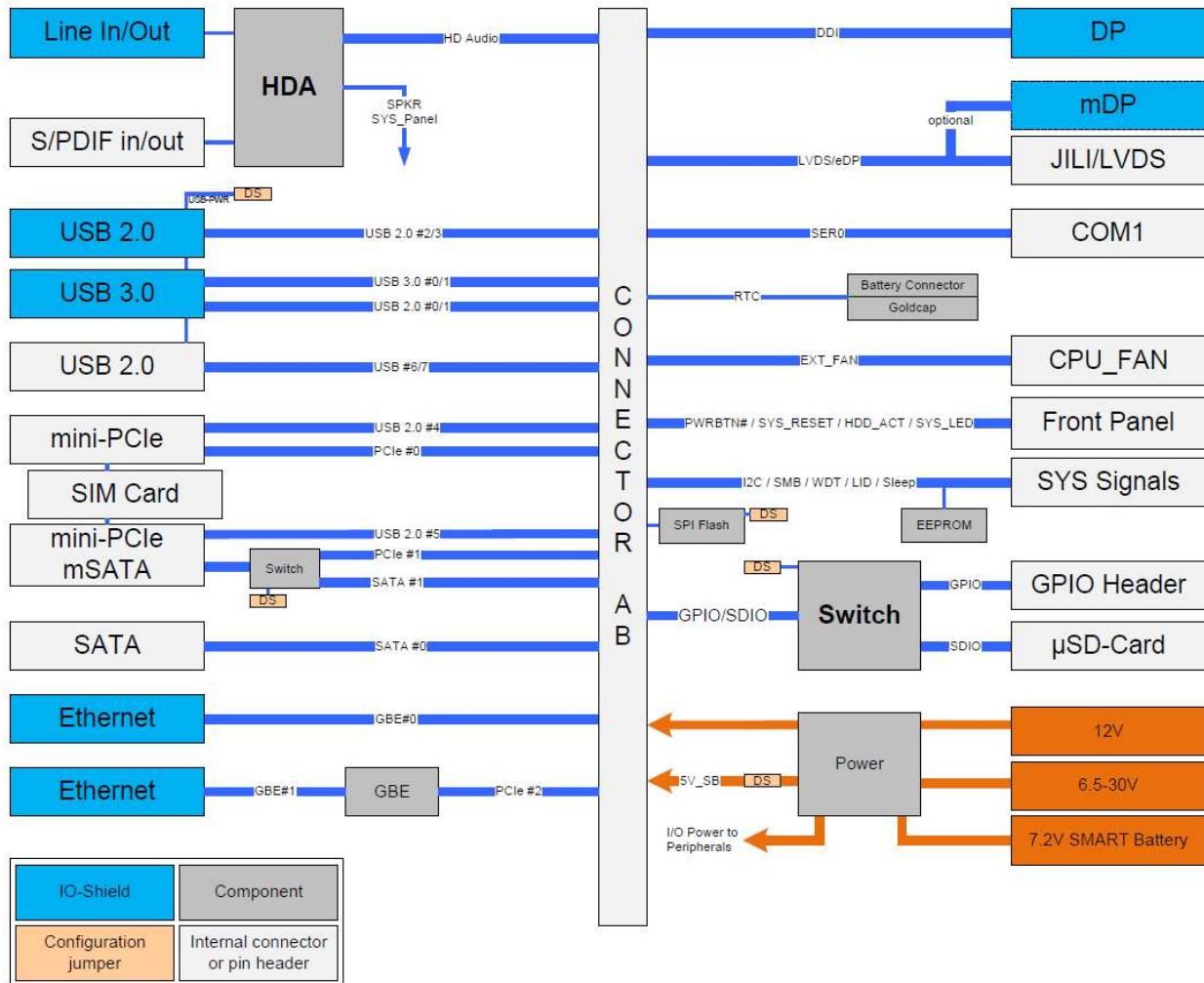
1	Part Numbers / Variants	3
2	Product specification.....	4
2.1	Block Diagram	4
2.2	Placement Overview	5
2.3	I/O Shield.....	6
2.4	Features.....	7

1 Part Numbers / Variants

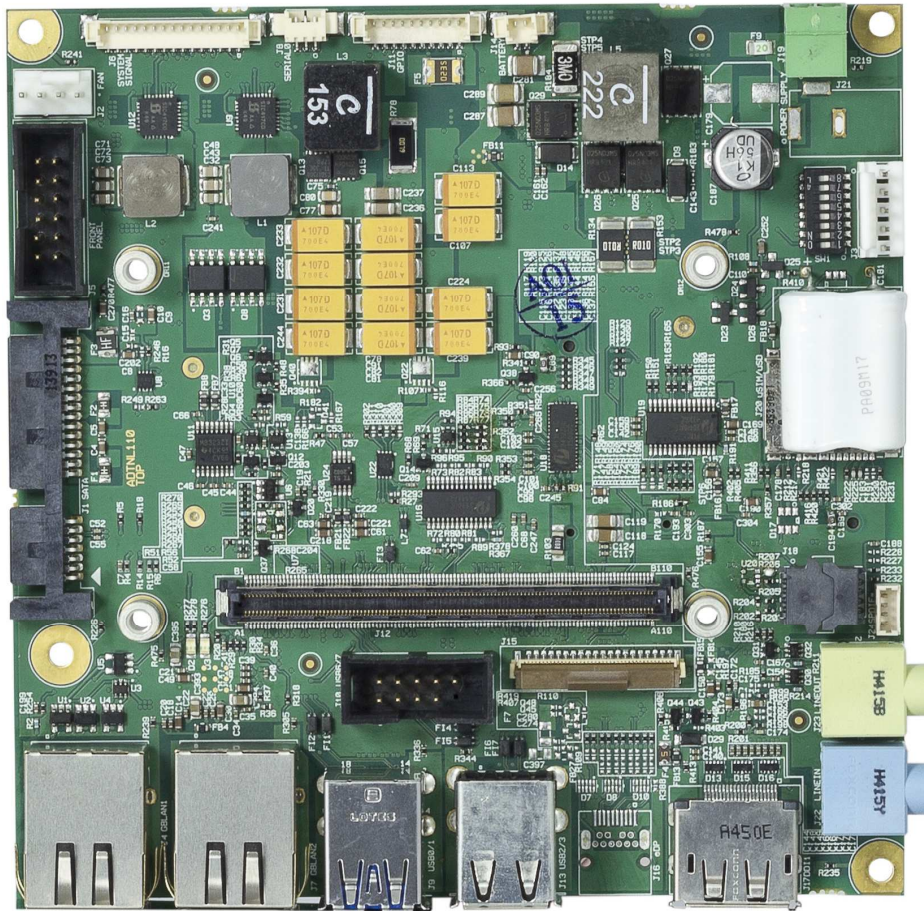
Compare	34105-0000-00-0	34105-0000-00-1	34105-0000-00-2
Short Name	COMe RefCarrier-i T10 TNIP	COMe RefCarrier-i T10 TNIV	COMe RefCarrier-i T10 TNIE
Full Name	COMe Reference Carrier-I Type10 Thin-nanoITX Professional	COMe Reference Carrier-I Type10 Thin-nanoITX Value	COMe Reference Carrier-I Type10 Thin-nanoITX Entry
Line-in	x	x	-
Line-out	x	x	-
S/PDIF	x	x	-
HDA Codec	x	x	-
USB 2.0 I/O	x	x	x
USB 3.0 I/O	x	x	x
USB 2.0 Pinheader	x	x	-
mPCIe 0	x	x	-
SIM	x	x	-
mPCIe 1 / mSATA	x	x	x
mSDCard	x	x	-
SATA0	x	x	x
GBLan1 (Module)	x	x	x
GBLan2 (Carrier)	x	x	-
DDI1 – DP++	x	x	x
LVDS	x	x	x
mDP++ (eDP)	-	-	-
SERO/1	x	x	x
Goldcap	x	x	-
RTC connector	x	x	x
CPU FAN	x	x	x
Sys Panel	x	x	x
Sys Signals	x	x	x
GPIO	x	x	x
SMART Battery	x	-	-
12V Input	x	x	x
6.5 – 30V Input	x	-	-
Rubber Feets	x	-	-
Mounting holes	open	open	open

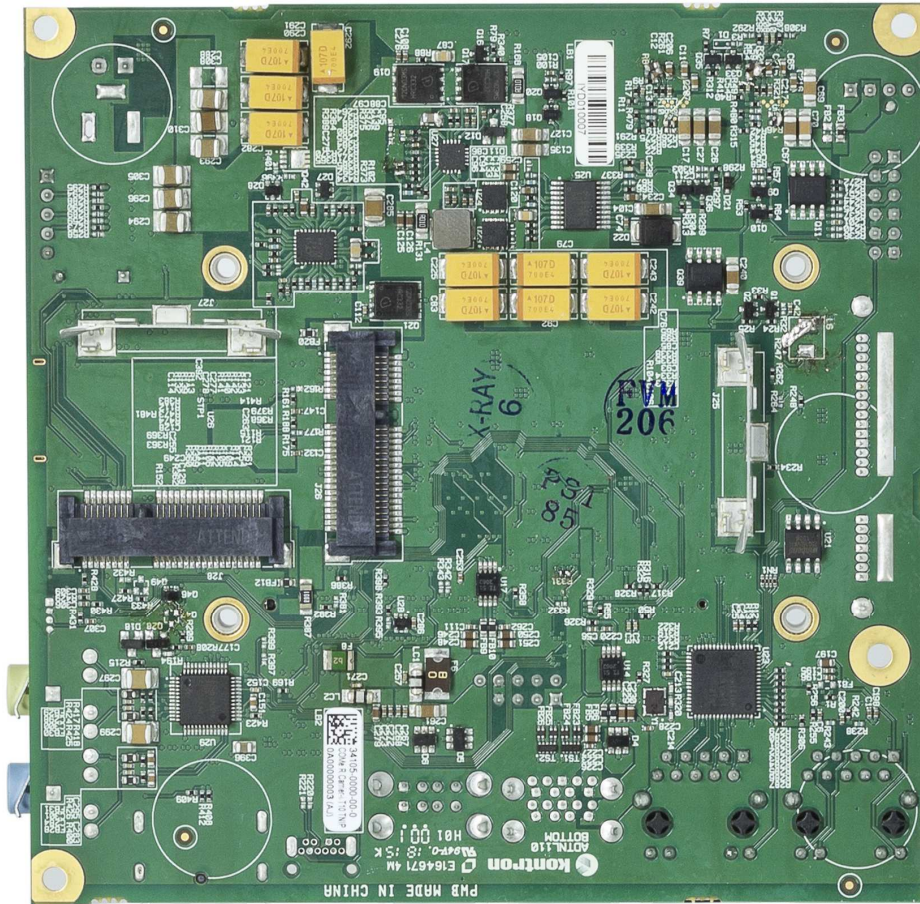
2 Product specification

2.1 Block Diagram

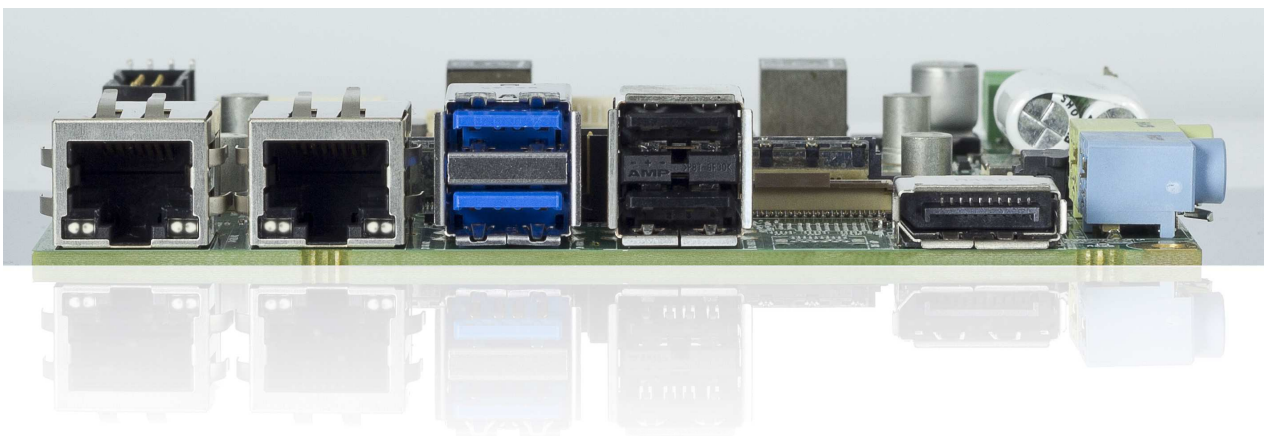


2.2 Placement overview (Top / Bottom)





2.3 I/O Shield



2.4 Features

FEATURES		SPECIFICATIONS
Form Factor	Form Factor	COMe Carrier board, Pin-out-Type 10, nITX Form Factor
	Mechanical Dimensions	nITX 120x120mm
Processor and Chipset	Processor and Chipset	Via COMe mini Type 10 Module
Memory	System Memory	Via COMe mini Type 10 Module
	Flash Memory	1x SPI BIOS socket
	EEPROM	1x Carrier EEPROM (FRUPROM)
Graphic Interfaces	Digital Display Interface 1 (DDIO)	1x DisplayPort++ connector from COMe DDIO
	LVDS	1x LVDS / JILI connector (24-bit dual channel LVDS)
	eDP	1x miniDisplayPort++ connector via eDP (optional, instead of LVDS)
System Board Interfaces	PCIe	1x PCIe (PCIe#0) for miniPCIe half-size card slot, connected to μ SIM combo socket (μ SD combo with μ SIM) 1x PCIe (PCIe#1) for miniPCIe full-size card slot, muxed with SATA#1 (mSATA), connected to μ SIM combo socket (μ SD combo with μ SIM) 1x PCIe (PCIe#2) for onboard GBit Ethernet Controller
	SATA	1x SATA (SATA#0) via 22pin SATA Plug connector 1x SATA (SATA#1) for mSATA socket / miniPCIe full-size card slot
	Ethernet	1x GBit Ethernet (GBE#0) via COMe mini Type 10 Module 1x GBit Ethernet (GBE#1) via onboard GBit Ethernet Controller (Intel Springville I210-IT)
	USB 2.0	2x USB 2.0 (USB#[0;1]) used for USB 3.0/2.0 dual port stack-up 2x USB 2.0 (USB#[2;3]) via USB 2.0 dual port stack-up

		<p>1x USB 2.0 (USB#4) used for miniPCIe half-size interface</p> <p>1x USB 2.0 (USB#5) used for miniPCIe full-size / mSATA interface</p> <p>2x USB 2.0 (USB#[6;7]) used for USB 2.0 pin-header (incl. USB Client Support)</p>
	USB 3.0	2x USB 3.0 (USB_SS#[0;1]) via USB 3.0/2.0 dual port stack-up
	HD Audio	<p>1x Rear Panel MIC / Line-In</p> <p>1x Rear Panel SPK / Line-Out</p> <p>1x S/PDIF Header</p>
	UART	1x RS232 COM port (RX/TX only) via pin-header
	GPIO/SDIO	<p>4x GPIs and 4x GPOs via 10pin GPIO pin-header</p> <p>or</p> <p>1x μSD via μSIM combo socket</p>
	SIM	1x μ SIM combo socket, connected to both miniPCIe interfaces
	I ² C	Via 15pin SYS_Signals / Embedded Interfaces pin-header
	SMBus	Via 15pin SYS_Signals / Embedded Interfaces pin-header
	LID / SLEEP	Via 15pin SYS_Signals / Embedded Interfaces pin-header
	CPU Fan	1x 4pin PWM FAN connector
	LEDs	1x Power LED as 1x HDD Activity LED via Front Panel connector
Switches	Configuration Switch	1x DIP switch for board configuration
Power Supply and Management	Power Supply	<p>Power Input 1: 12V only</p> <p>Power Input 2: 6.5V – 30V wide input range</p> <p>SMART Battery: 7.2V -8.4V</p>
	Power / Reset Button	Available via Front Panel connector

	RTC	1x 2pin connector for external CMOS battery 1x Goldcap for RTC backup
General	BIOS	Via COMe mini Type 10 Module (by default)
	Operating Temperature	-40°C to +85°C
	Storage Temperature	-40°C to +85°C
	Humidity Operating / non-operating	93% relative Humidity at 40°C, non-condensing (according to IEC 60068-2-78)

Corporate Offices

Europe, Middle East & Africa

Oskar-von-Miller-Str. 1
85386 Eching/Munich
Germany

Tel.: +49 (0)8165/ 77 777
Fax: +49 (0)8165/ 77 219

info@kontron.com

North America

14118 Stowe Drive
Poway, CA 92064-7147
USA

Tel.: +1 888 294 4558
Fax: +1 858 677 0898

info@us.kontron.com

Asia Pacific

17 Building, Block #1, ABP.
188 Southern West 4th Ring
Beijing 100070, P.R.China

Tel.: + 86 10 63751188
Fax: + 86 10 83682438

info@kontron.cn

