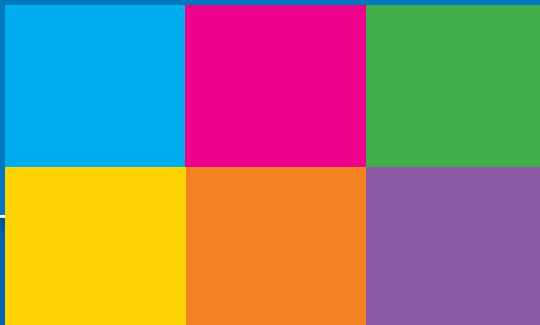




SAURO®
ELECTRONIC CONNECTORS
— by the law —

New Technologies for
Home Automation and Industrial Environments



New technologies

A

Normo-orthogonal option

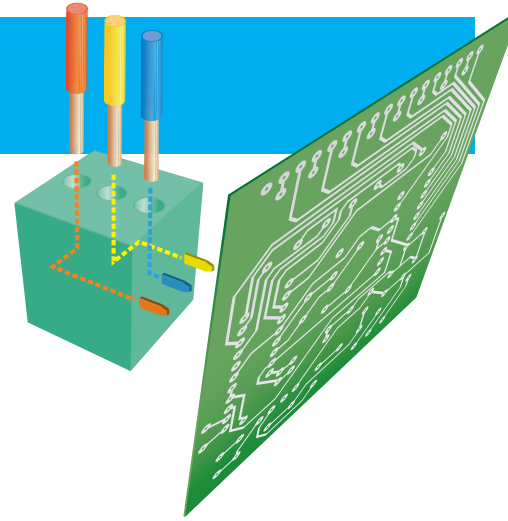
Ideal for vertical PCBs

Sauro normo-orthogonal terminal blocks and connectors, thanks to the special pin shape, are suitable to be soldered onto vertical PCBs or installed on panels via a DIN guide, allowing a prompt, easy frontal mating.

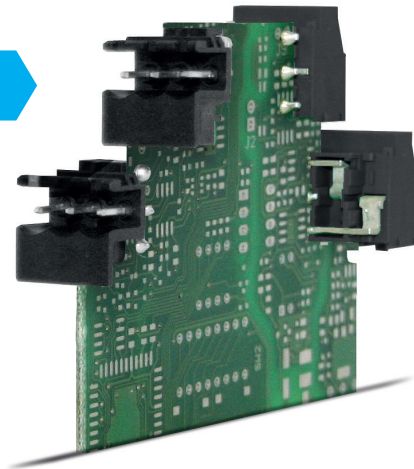
Versatility

The versatility of the normo-orthogonal solution guarantees its suitability for the most diverse applications in the electronic industry.

The shape of the pins makes the product solderable onto both horizontal and vertical pcbs, according to the client's needs, guaranteeing at the same time an easy and prompt wiring.



Example of Application



These products are available as **STH**[®] (**SMD Through Hole**) with integrated polarization system devised by Sauro and packaged in box, tape on reel, tube or tray.

Series

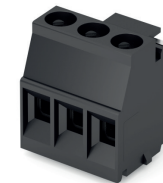
Features



CIMH

Standard Colour:	Black
Dimensions (w x h):	14.65 x 16.5 mm (.577 x .65 in)
Pitches and Rated Voltage:	5 mm (.197 in) 300 V
P/N System:	CIMHnnNRp-_N____ CIMHnnNLp-_N____




Suitable for reflow processes (STH[®] Technology)



MSMH

Clamping Type:	Rising Clamp
Standard Colour:	Black
Dimensions (w x h):	15.3 x 17.05 mm (.602 x .671 in)
Max Approved Wire Size / Rated Current:	2.5 mm ² ; 12 AWG / 24 A
Pitches and Rated Voltage:	5 mm (.197 in) 300 V
P/N System:	MSMHnnNRp-_N____ MSMHnnNLp-_N____

Dimensional Classes

-  Nominal Wire Section up to 1.5 mm² [14 AWG] **Low**
-  Nominal Wire Section up to 2.5 mm² [12 AWG] **Medium**
-  Nominal Wire Section up to 35 mm² [1 AWG] **High**

P/N System:
nn = number of poles
p = pitch

Please see our complete range of products by visiting our website on www.sauro.net

Spring tightening option

Fast Fit Mount

Both the single and the multi-polar connection are fast and immediate with solid wires or with ferrules, and are also possible with stranded wires.

Tightening independent from the operator

The tightening force is solely determined by the spring itself and does not depend on the operator.

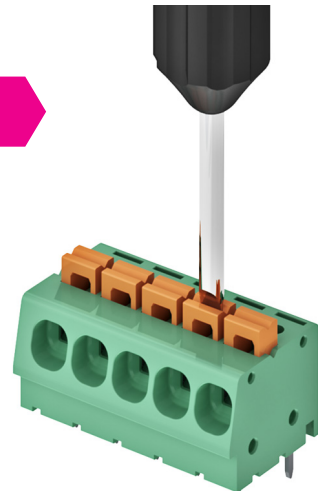
Vibration Proof

The spring connection is suitable for environments with particular vibration frequencies: tightening is nevertheless always guaranteed.

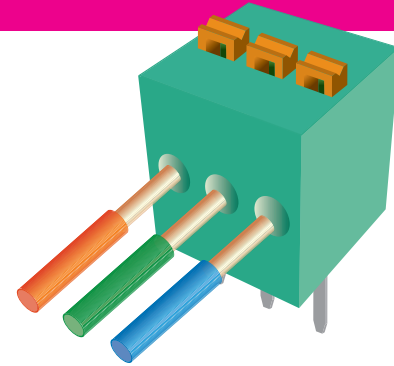
Tool and Finger Protection

Tool and finger protection is guaranteed, as there is no metallic part in tension accessible to both accidental and/or screwdriver contact.

Example of Application



These products are available as **STH® (SMD Through Hole)** with integrated polarization system devised by Sauro and packaged in box, tape on reel, tube or tray.



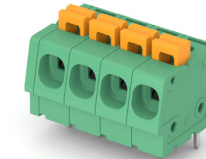
Series

Features



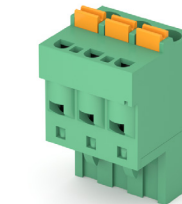
MCCH

Clamping Type:	Spring
Standard Colour:	Black
Dimensions (w x h):	12 x 12 mm (.472 x .472 in)
Max Approved Wire Size / Rated Current:	1.5 mm ² ; 16 AWG / 10 A
Pitches and Rated Voltage:	3,81 mm, 5,08 mm (.150, .200 in) 300 V 7,62 mm, 10,16 mm (.300, .400 in) 750 V
P/N System:	MCCHnn4mp-_N_____
Suitable for reflow process (STH® Technology)	



MCM




Clamping Type:	Spring
Standard Colour:	Green
Dimensions (w x h):	14.8 x 14.45 mm (.583 x .569 in)
Max Approved Wire Size / Rated Current:	2.5 mm ² ; 12 AWG / 16 A
Pitches and Rated Voltage:	5 mm, 5,08 mm (.197, .200 in) 300 V 7,5/7,62 mm, 10/10,16 mm (.295, .300, .394, .400 in) 750 V
P/N System:	MCMnnpmp-_____



CCF

Clamping Type:	Spring
Standard Colour:	Green
Dimensions (w x h):	25.4 x 14.9 mm (1 x .571 in)
Max Approved Wire Size / Rated Current:	2.5 mm ² ; 12 AWG / 12 A
Pitches and Rated Voltage:	5 mm, 5,08 mm (.197 in, .200 in) 300 V 10 mm, 10,16 mm (.394 in, .400 in) 1000 V
P/N System:	CCFnnpmp-_____

Dimensional Classes

-  Nominal Wire Section up to 1.5 mm² [14 AWG] **Low**
-  Nominal Wire Section up to 2.5 mm² [12 AWG] **Medium**
-  Nominal Wire Section up to 35 mm² [1 AWG] **High**

P/N System:
nn = number of poles **p** = pitch
v = version
m = mounting type

Please see our complete range of products by visiting our website on www.sauro.net

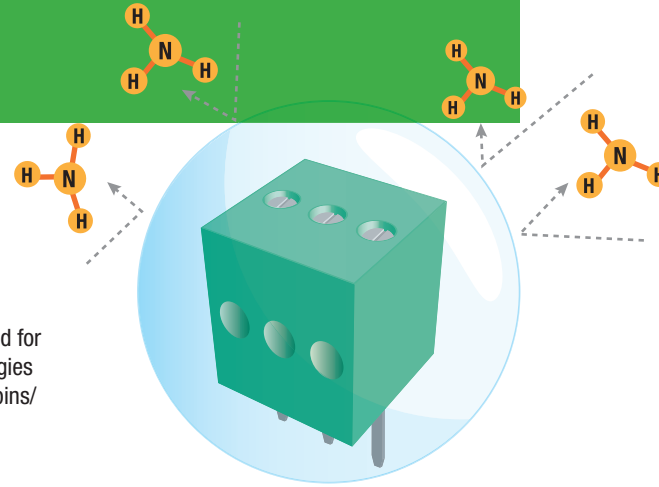
New technologies

C

Ammonia (NH₃) resistant products

Designed for Bio-Technology Applications and harsh environments

This range of Sauro terminal blocks is suitable to be soldered onto PCBs which are intended for use in environments where ammonia is present, such as control systems for bio-technologies or farming, thanks to stainless steel springs and wrapped clamps or specific copper alloy pins/terminals.



Series

Features

MCQH

Clamping Type:	Spring
Standard Colour:	Black
Dimensions (w x h):	17.9 x 14 mm (.704 x .551 in)
Max Approved Wire Size / Rated Current:	2.5 mm ² ; 12 AWG / 16 A
Pitches and Rated Voltage:	5 mm, (.197) 300 V
	10 mm (.394) 750 V
P/N System:	MCQHnnvmp-_N_____
Suitable for reflow process (STH® Technology)	




MMT

Clamping Type:	Spring
Standard Colour:	Green
Dimensions (w x h):	14.85 x 11.65 mm (.585 x .459 in)
Max Approved Wire Size / Rated Current:	1.5 mm ² ; 16 AWG / 10 A
Pitches and Rated Voltage:	3.5/3.81 mm (.138/.150 in) 300 V
	7/7.62 mm (.275/.300 in) 750 V
P/N System:	MMTnnvmp-_____

MPP

Clamping Type:	Rising Clamp
Standard Colour:	Green
Dimensions (w x h):	31 x 39 mm (1.220 x 1.535 in)
Max Approved Wire Size / Rated Current:	35 mm ² ; 1 AWG / 135 A
Pitches and Rated Voltage:	15 mm (.591 in) 1000 V
P/N System:	MPPnnvmp-_____

Dimensional Classes

-  Nominal Wire Section up to 1.5 mm² [14 AWG] **Low**
-  Nominal Wire Section up to 2.5 mm² [12 AWG] **Medium**
-  Nominal Wire Section up to 35 mm² [1 AWG] **High**

P/N System:
nn = number of poles **p** = pitch
v = version
m = mounting type

Please see our complete range of products by visiting our website on www.sauro.net

Example of Application



These products are available as **STH® (SMD Through Hole)** with integrated polarization system devised by Sauro and packaged in box, tape on reel, tube or tray.

New technologies

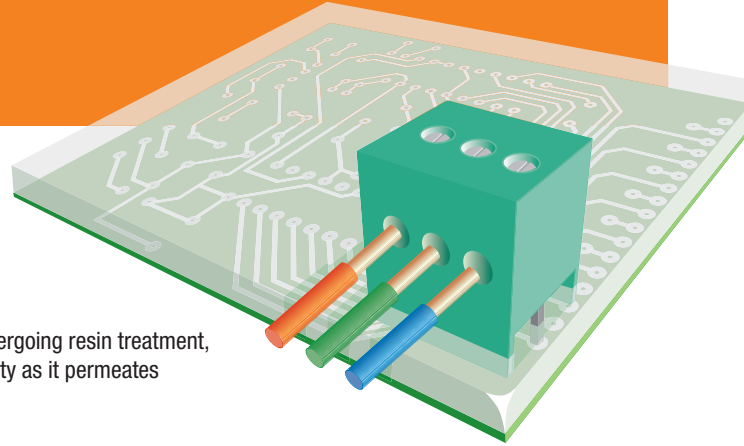
Resined PCBs option

Upturned Terminal Blocks and Connectors

Sauro upturned terminal blocks and connectors are suitable for PCBs undergoing resin treatment, because the resin itself does not compromise the component's functionality as it permeates under it.

Protected tightening clamp and spring for resin permeation

Terminal blocks and connectors closed from underneath (even through base panels) may be suitable for PCBs undergoing resin treatment, because metallic parts are completely protected within the insulating housing so as to avoid the resin blocking them. In fact, should the resin manage to reach the clamp, the latter would not be able to move (ascend and descend) and tighten the wires correctly.



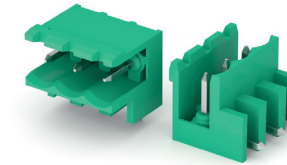
Example of Application



These products are available as **STH®** (SMD Through Hole) with integrated polarization system devised by Sauro and packaged in box, tape on reel, tube or tray.

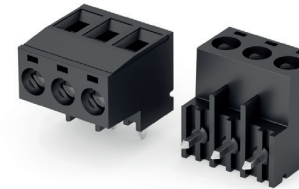
Series

Features



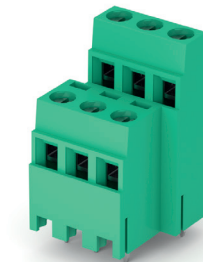
CIM ●

Standard Colour:	Green
Dimensions (w x h):	12 x 12.15 mm (.472 x .478 in)
Pitches and Rated Voltage:	5 mm, 5.08 mm (.197, .200 in) 300 V 7.5/7.62 mm, 10/10.16 mm (.295, .300, .394, .400 in) 1000 V
P/N System:	CIMnnRmp-_____



MSSH ●

Clamping Type:	Rising Clamp
Standard Colour:	Black
Dimensions (w x h):	15 x 12 mm (.591 x .472 in)
Max Approved Wire Size / Rated Current:	2.5 mm ² ; 12 AWG / 24 A
Pitches and Rated Voltage:	5 mm (.197 in) 300 V 10 mm (.394 in) 750 V
P/N System:	MSSHnnTmp-_N_____
Suitable for reflow process (STH® Technology)	



Plurima® ▲ ● ■

Clamping Type:	Rising Clamp
Standard Colour:	Green
Dimensions (h):	up to 58.8 mm (2.315 in)
Max Approved Wire Size / Rated Current:	from 1.5 to 4 mm ² ; from 11 to 15 AWG / from 17.5 to 32 A
Pitches and Rated Voltage:	5 mm, 5.08 mm (.197, .200 in) 300 V 10/10.16 mm (.394, .400 in) 750 V
P/N System:	PSBnnvmp-_____, PSMnnvmp-_____, PSQnnvmp-_____

Dimensional Classes

- ▲ Nominal Wire Section up to 1.5 mm² [14 AWG] **Low**
- Nominal Wire Section up to 2.5 mm² [12 AWG] **Medium**
- Nominal Wire Section up to 35 mm² [1 AWG] **High**

P/N System:
nn = number of poles **p** = pitch
v = version
m = mounting type

Please see our complete range of products by visiting our website on www.sauro.net

New technologies

Double wiring option

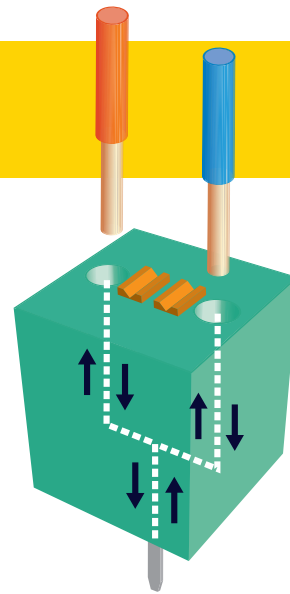
Security for spring wiring:

2 wires per pole perfectly independently connected

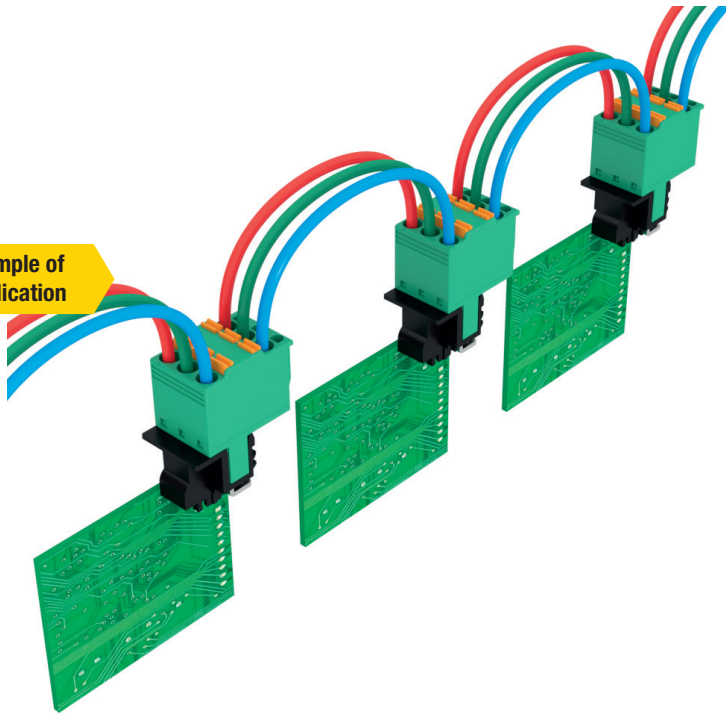
Sauro range of spring connectors and terminal blocks with double wire entry allows simultaneous wiring of two cables into the same pole, each one perfectly firm and independent from the other.

Ideal for BUS Systems

The possibility to insert two wires in the same pole makes sure these types of terminal blocks and connectors can be used to produce BUS transmission or current supply systems.



Example of Application



These products are available as **STH**[®] (**SMD Through Hole**) with integrated polarization system devised by Sauro and packaged in box, tape on reel, tube or tray.

Series

Features

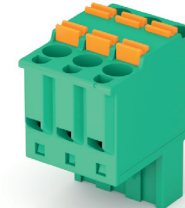
CHF

Clamping Type:	Spring
Standard Colour:	Green
Dimensions (w x h):	20 x 16 mm (.787 x .63 in)
Max Approved Wire Size / Rated Current:	1.5 mm ² ; 16 AWG / 4 A
Pitches and Rated Voltage:	3.5 mm (.138 in) 150 V
	7 mm (.276 in) 300 V
P/N System:	CHFnnDmp-_____



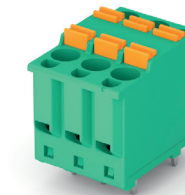
CCF

Clamping Type:	Spring
Standard Colour:	Green
Dimensions (w x h):	22.1 x 25.2 mm (.870 x .992 in)
Max Approved Wire Size / Rated Current:	2.5 mm ² ; 12 AWG / 12 A
Pitches and Rated Voltage:	5 mm (.197 in) 300 V
	10 mm (.394 in) 1000 V
P/N System:	CCFnnDmp-_____






MCQ

Clamping Type:	Spring
Standard Colour:	Green
Dimensions (w x h):	22.1 x 17.3 mm (.870 x .681 in)
Max Approved Wire Size / Rated Current:	2.5 mm ² ; 12 AWG / 16 A
Pitches and Rated Voltage:	5 mm (.197 in) 300 V
	10 mm (.394 in) 750 V
P/N System:	MCQnnDmp-_____



Dimensional Classes

-  Nominal Wire Section up to 1.5 mm² [14 AWG] **Low**
-  Nominal Wire Section up to 2.5 mm² [12 AWG] **Medium**
-  Nominal Wire Section up to 35 mm² [1 AWG] **High**

P/N System:

nn = number of poles **p** = pitch
v = version
m = mounting type

Please see our complete range of products by visiting our website on www.sauro.net

New technologies

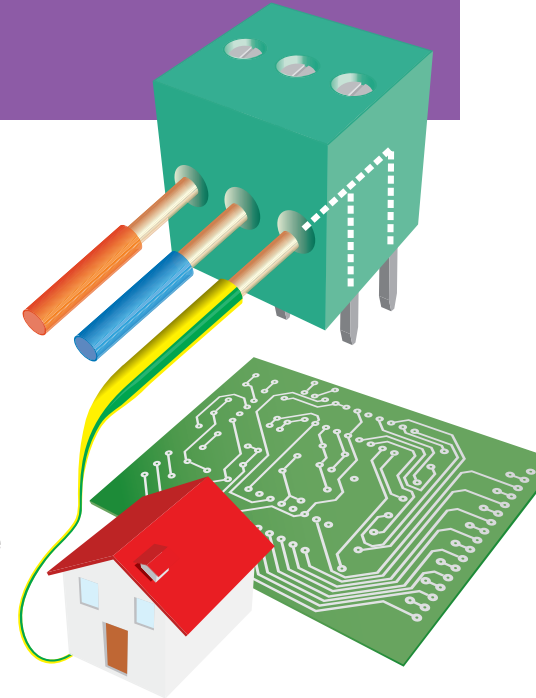
Home Automation option according to EN 60335

Dual pins for ground circuits

Sauro double pin terminal blocks and connectors allow the use of printed circuit tracks devised for grounding systems in devices subject to EN 60335-1 European regulation, for home environments and such. In fact, with the double pin, it is possible to connect two independent tracks to the grounding system, with separate soldering points.

GWIT passed at 775°C

All Sauro terminal blocks and connectors are made of phosphorus and dioxin free plastics, and contain no detrimental to health halogens. They also do not contain antimony trioxide, and can be used for home automation systems as they are GWIT 775°C certified, according to EN 60335-1.



Example of Application



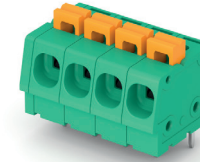
These products are available as **STH®** (SMD Through Hole) with integrated polarization system devised by Sauro and packaged in box, tape on reel, tube or tray.

Series

Features

MCM ●

Clamping Type:	Spring
Standard Colour:	Green
Dimensions (w x h):	14.8 x 14.45 mm (.583 x .569 in)
Max Approved Wire Size / Rated Current:	2.5 mm ² ; 12 AWG / 16 A
Pitches and Rated Voltage:	5 mm, 5.08 mm (.197, .200 in) 300 V 7.5/7.62 mm, 10/10.16 mm (.295, .300, .394, .400 in) 750 V
P/N System:	MCMnnvmp-_____



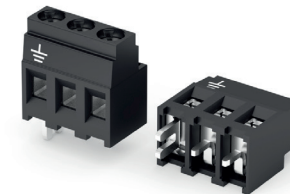
CGF ●

Standard Colour:	Green
Dimensions (w x h):	10.2 x 18.9 mm (.402 x .744 in)
Max Rated Current:	16 A
Pitches and Rated Voltage:	5 mm, 5.08 mm (.197, .200 in) 300 V 7.5/7.62 mm, 10/10.16 mm (.295, .300, .394, .400 in) 1000 V
P/N System	CGFnnvmp-_____



MSMH ●

Standard Colour:	Black
Dimensions (w x h):	9 x 15.2 mm (.354 x .598 in)
Rated Current:	24 A
Pitches and Rated Voltage:	5 mm (.197 in) 300 V 7.5 mm, 10 mm (.295, .394 in) 750 V
P/N System:	MSMHnnDmp-_N_____
Suitable for reflow process (STH® Technology)	



Dimensional Classes

- Nominal Wire Section up to 1.5 mm² [14 AWG] **Low**
- Nominal Wire Section up to 2.5 mm² [12 AWG] **Medium**
- Nominal Wire Section up to 35 mm² [1 AWG] **High**

P/N System:
nn = number of poles **p** = pitch
v = version
m = mounting type

Please see our complete range of products by visiting our website on www.sauro.net

New technologies by the law

System Automation and Robotics

- completely automated production in line with Industrie 4.0 concepts and Lean-Smart Factory
- zero functional defect guarantee: every single pole has already worked on the assembly line
- high quality products at competitive prices
- Sauro holds the most prestigious international approvals (UL, VDE, CSA, IMQ, etc.) and their related files
- compliance to EN 60335 Regulation for domestic appliances, to REACH and RoHS2, using only pure tin (Sn100) and banning the use of lead and all detrimental substances to man, the environment and industrialization.
- orientation towards the customer's needs: more and more modern, valid, miniaturized, customized, safe and economical solutions
- full compatibility with the most advanced competitors

Insulating Housing

- self-extinguishing V0 class according to UL94
- resistant to chlorurate solvents
- no phosphorus, dioxin, halogen and antimony trioxide, because detrimental to health
- suitable for home automation, as the material has a GWIT (Glow Wire Ignition Temperature) of 775°C according to EN60335 Regulation
- pad printing with bicomponent ink obtaining characters with maximum readability (up to four characters per pole for the 5mm pitch version), indelible and resistant to scratches
- color check through wavelengths ($\lambda = 520\text{nm}$ for green)
- double captive screw system
- traditional plastic material: 260 °C (500°F) no deformation for 30 seconds
- **STH® (SMD Through Hole)** plastic material: suitable for all reflow soldering processes

Metallic parts

- made exclusively of copper alloys with minimum 2µm nickel plating and 6µm tin plating (lead free Sn100)
- clamp technology: exclusively with rising clamp
- spring technology: wire retention force $Fr > 250\text{N}$
- guarantee of no whiskers phenomenon
- salt mist test passing according to UNI EN ISO 9227-06 (168h)



Thermoplastic:
NO Halogens, NO Phosphorus, NO Dioxin



All parts:
Leadfree, RoHS, 100% Tin



**Quality Environment
Health And Safety**





Contacts

Europe and Africa
SAURO s.r.l.

Italy (+39) 049 9070440
info@sauro.net

North Europe
SAURO GmbH

German (+49) 2151 7896043
saurogmbh@sauro.net

North & South America
SAURO Inc.

Texas (+1) 512 2558420
sauroinc@sauro.net

India and Oceania

SAURO Electronic Connectors (Shanghai) Co. Ltd.

Shanghai (+86) 021 58682734
saurocn@sauro.net