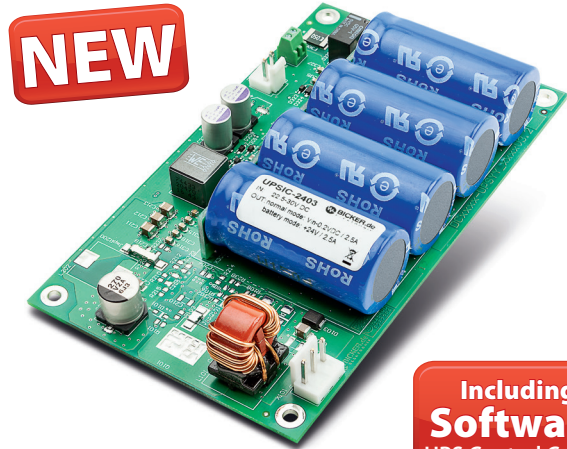


UPSIC-2403

24 VDC / 3 A

- ✓ Regulated voltage at backup
- ✓ Supercaps for energy storage
- ✓ Maintenance-free
- ✓ High cycle stability > 500 000
- ✓ Charge time <60 sec at maximum charge current
- ✓ Extended temperature range -20...+70 °C
- ✓ Compact design
- ✓ Active reverse polarity protection
- ✓ Power Fail signal via relay, RS232 connection
- ✓ Intelligent charge sharing



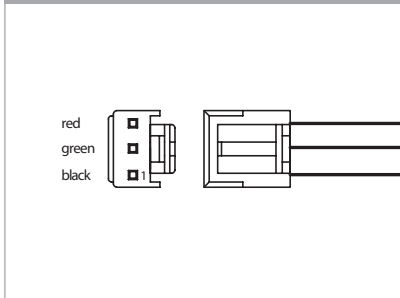
Technical data	
Input voltage	24 VDC (22.5...30 VDC)
Input current	3.5 A
Output power	70 W
Output voltage battery mode	24 VDC ±2 % regulated
Output voltage normal mode	V _{in} -0.2 V at 100% load
Output current	3 A
Output ripple	≤40 mV
Efficiency	94% (V _{Supercap} 9.5V, I _{out} 1.25 A)
Charge current	Depending on load up to 6.2 A CC (V _{Supercap})
Charging method	CC / CV
Storage type	Supercaps 4x 100 F
Charging time	<60 sec at maximum charge current @ 4x 100 F
Backup time	See diagram
Protection	Overcurrent protection – Non LATCH Active reverse polarity protection
Temperature	Operating: -20...+70 °C / Storage: -20...+70 °C
Humidity	Operating: 10...85 % RH, non-condensing / Storage: 10...90 % RH, non-condensing
Dimensions (WxDxH)	135 x 79.5 x 26 mm incl. supercaps @ 4x 100 F
Weight (net)	0.17 kg @ 4x 100 F

Optional Accessories

▷▷▷ For detailed information please visit our website www.bicker.de and refer to the article number.

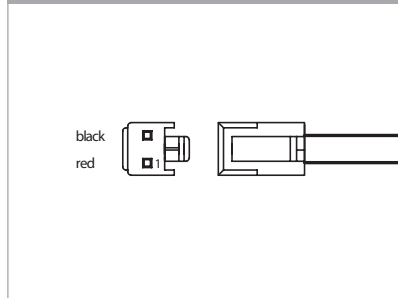
PSZ-1036 | Input cable

3-pole, length 500mm, AWG 18, ends open



PSZ-1037 | Output cable

2-pole, length 500mm, AWG 18, ends open



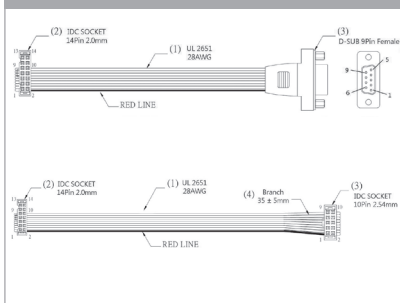
PSZ-1009 | Male adapter

DCplug: 2.5 x 5.5 mm, AWG 26-12

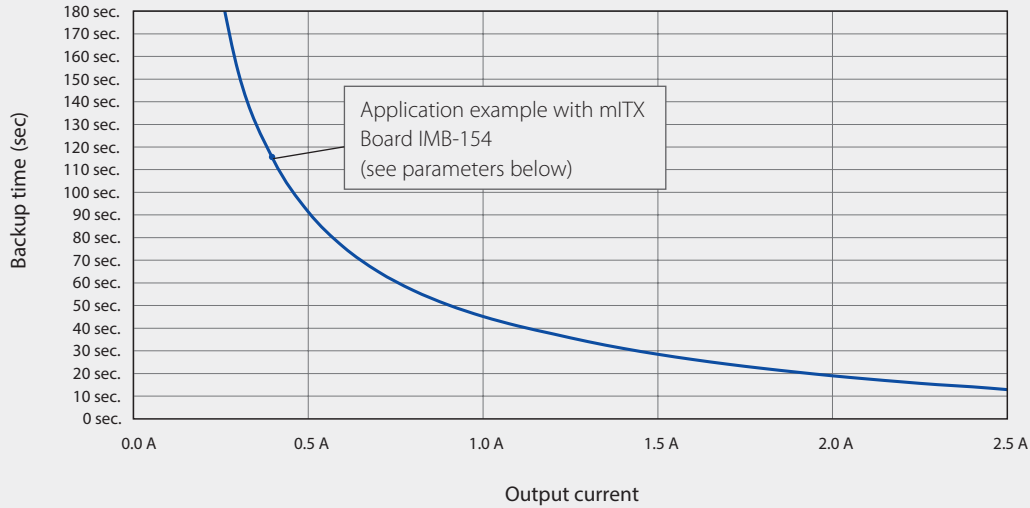


PSZ-1046 / PSZ-1048 | Interface cable

Interface cable for UPSIC and DC2412,
PSZ-1046: IDC 2.0 to SUB-D 9 pin female,
PSZ-1048: IDDC 2.0 to IDC 2.54



Backup time



Standby@No Load >30 min
 — @ nom. Cap. & 25 °C

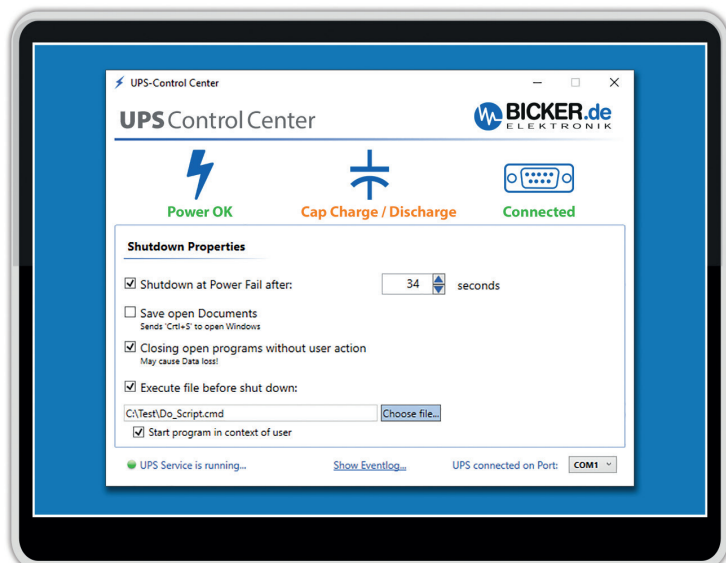
Parameters of the test system for the backup curve (was not tested with 24 V type)

Board	IMB-154 L0.36 SN: 59M0X2003883 CPU: Braswell N3150; 4x 1.60GHz	ROM	1x mSATA 32GB Type: CIE MSM300M JB032GS SN: CIE164905767
RAM	2 x 4 GB / DDR3 SO-DIMM 1600MHz FB Type: CIR-S3SUSKA 1604G SN: CIR 154630106 CIR 154630106	OS	Microsoft Windows 10 Enterprise Evaluation Version 1511 Build 10586.589 (2016/09/16)
		Test Software	BurnInTest V7.1 Pro

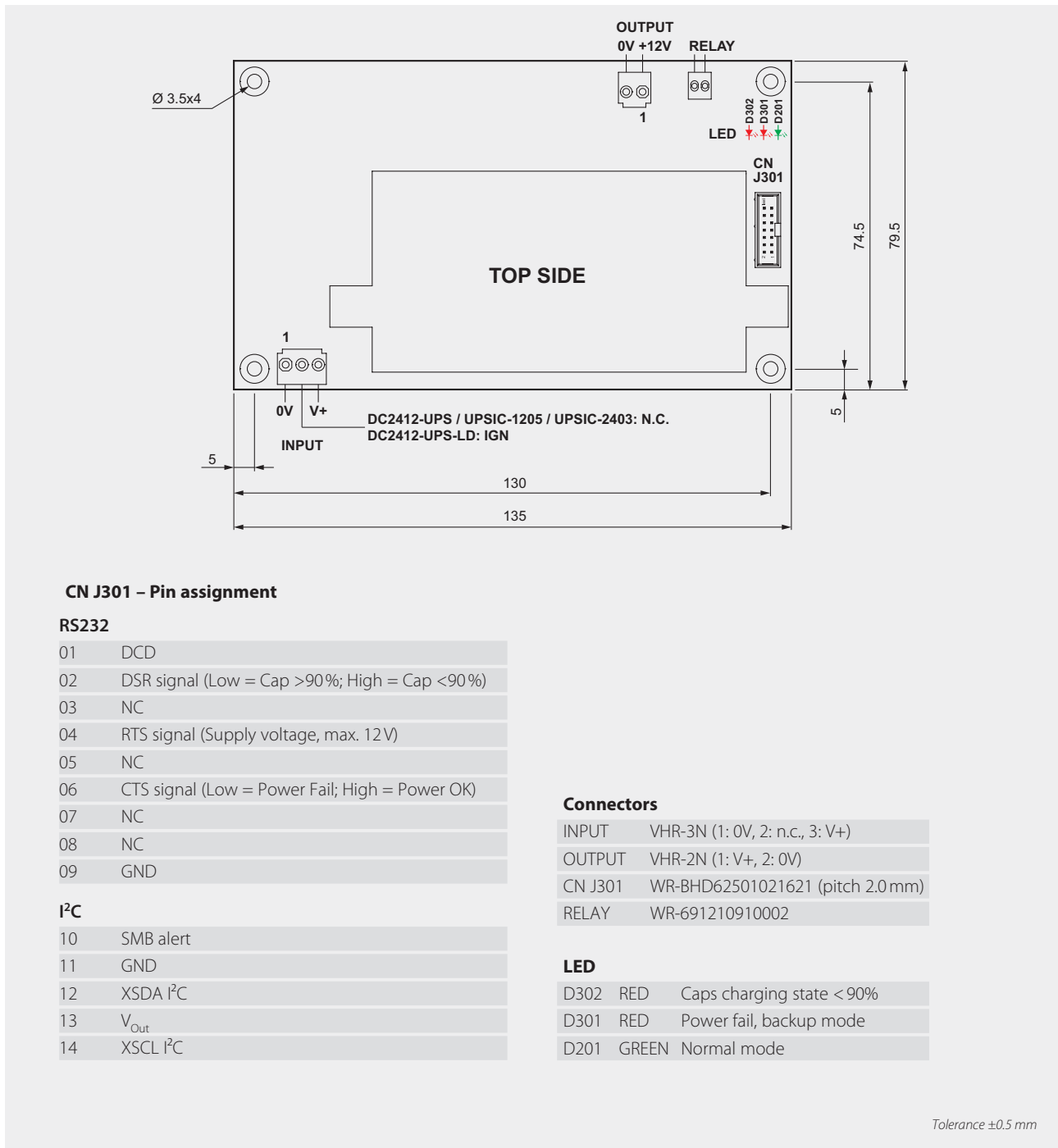
Software UPS Control Center

UPS Control Center

The UPS software is available for free download directly on the product page at www.bicker.de.



Drawing UPSIC-2403



Specification is subject to change without notice. Errors excepted. Status as at: 21.09.2017

Recommended power supplies from Bicker Elektronik ▷▷▷ [Additional recommendations on www.bicker.de](http://www.bicker.de)

BEO-1024M	BEO-1524M	BET-0924	BET-1024M	BED-12024	BEN-10024
100 Watt	150 Watt	90 Watt	100 Watt	120 Watt	100 Watt

